

Cool
Climate
Oenology &
Viticulture
Institute

Brock University

CCOVI - Calibrate Your Vineyard Workshop

Assessing Bud Injury to Grapes

Kevin Ker and Jim Willwerth

KCMS Inc. and Cool Climate Oenology and Viticulture Institute
Brock University, St. Catharines Ontario Canada

© January 2013

Sampling Procedure



- Need 100 nodes/buds per cultivar per site
- 10 canes of 10 buds each (must be those that could be fruit canes left after pruning)
- Must contain basal 10 buds of last years growth
- Buds need to thaw after freeze event
- 24 to 48 hours of warming to allow for oxidative actions to occur to show if injury occurred



Record keeping for bud survival



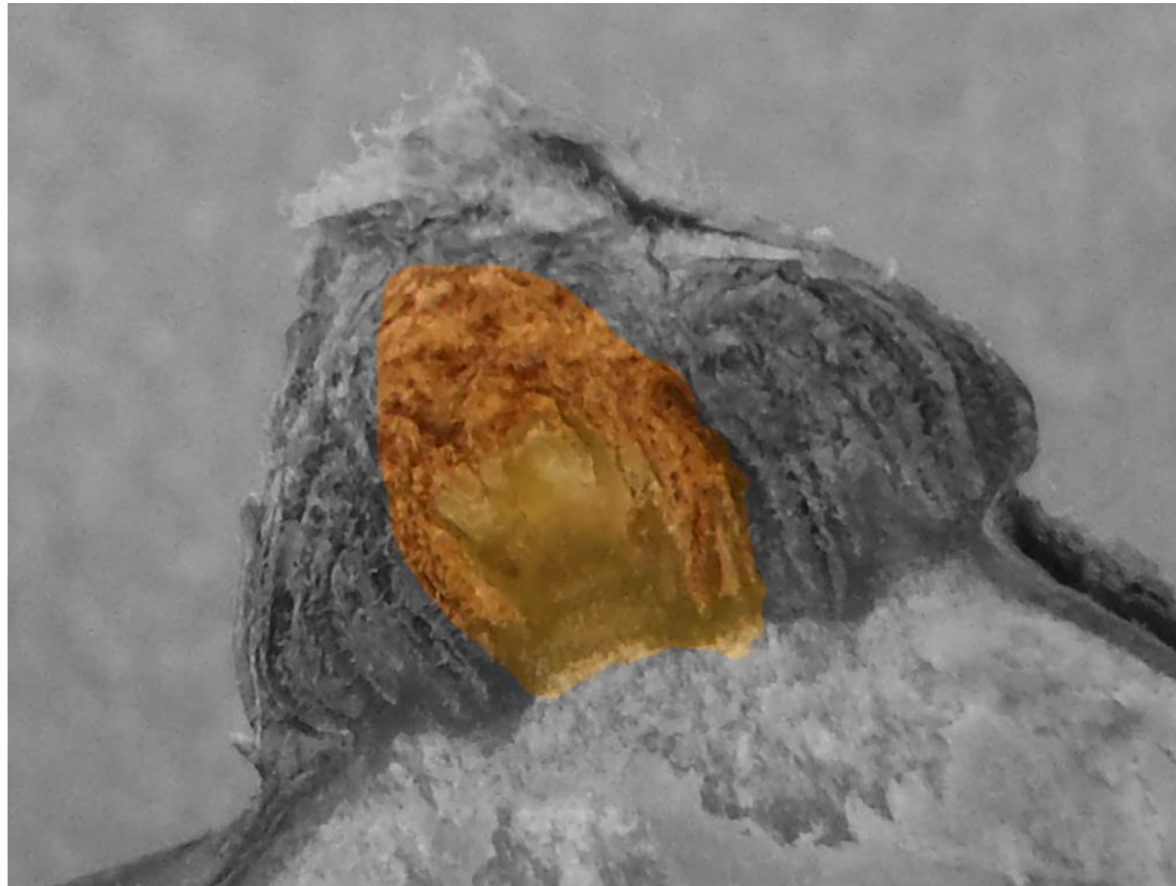
Date				CV					Block			
	Bud Position (Base 1 to 10)											
Cane	1	2	3	4	5	6	7	8	9	10	Total	
C1												
C2												
C3												
C4												
C5												
C6												
C7												
C8												
C9												
C10												
									Total			



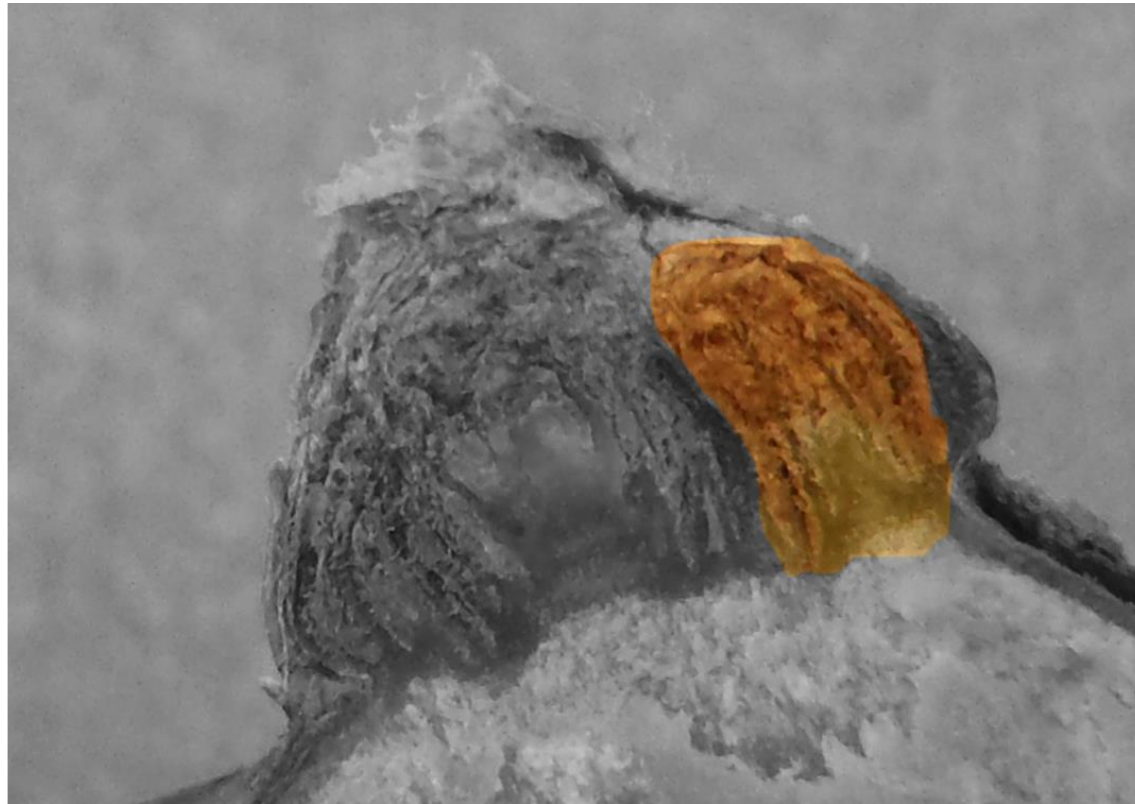
Longitudinal Section of Bud



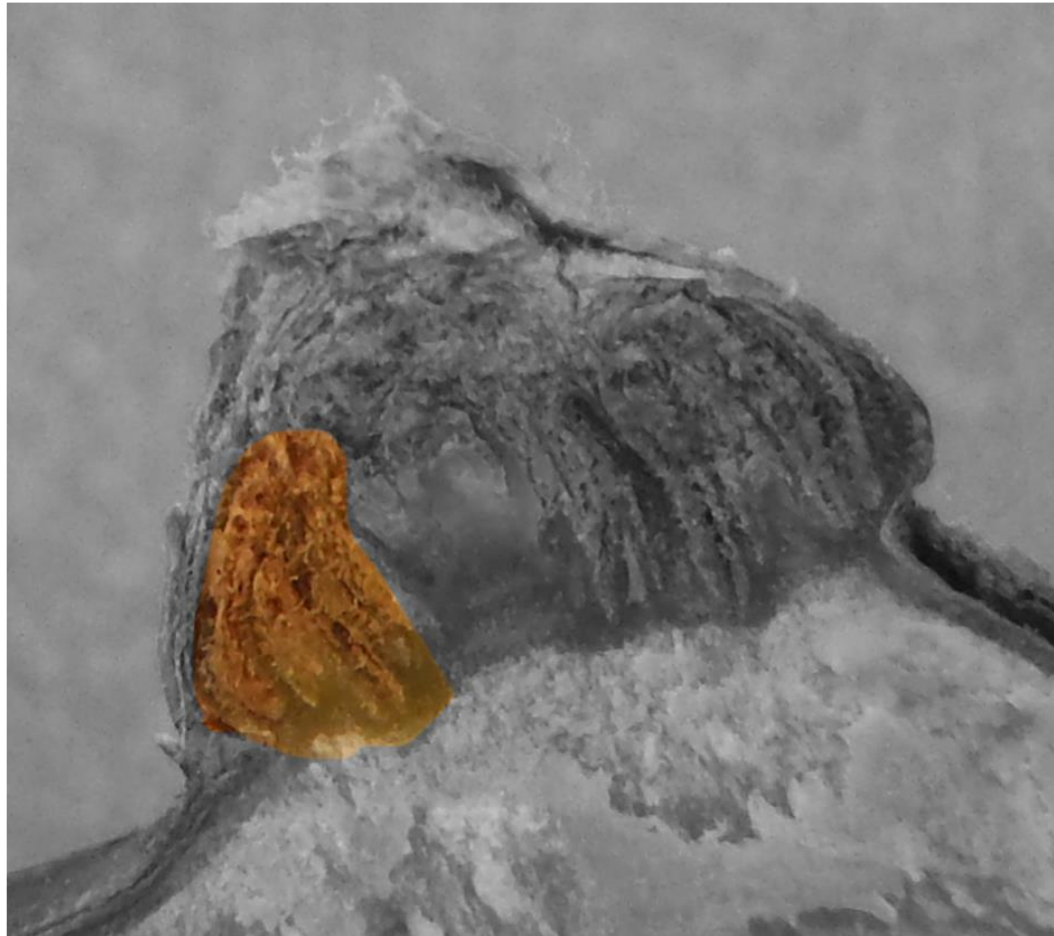
Primary Bud Highlighted



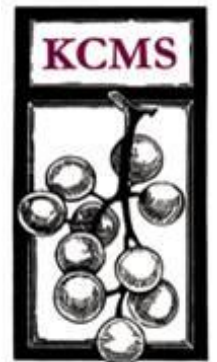
Secondary Bud Highlighted



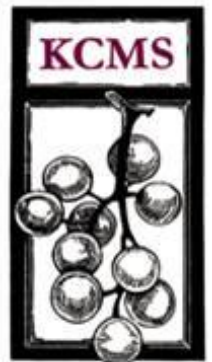
Tertiary bud Highlighted



Bud's top section



Intact live bud

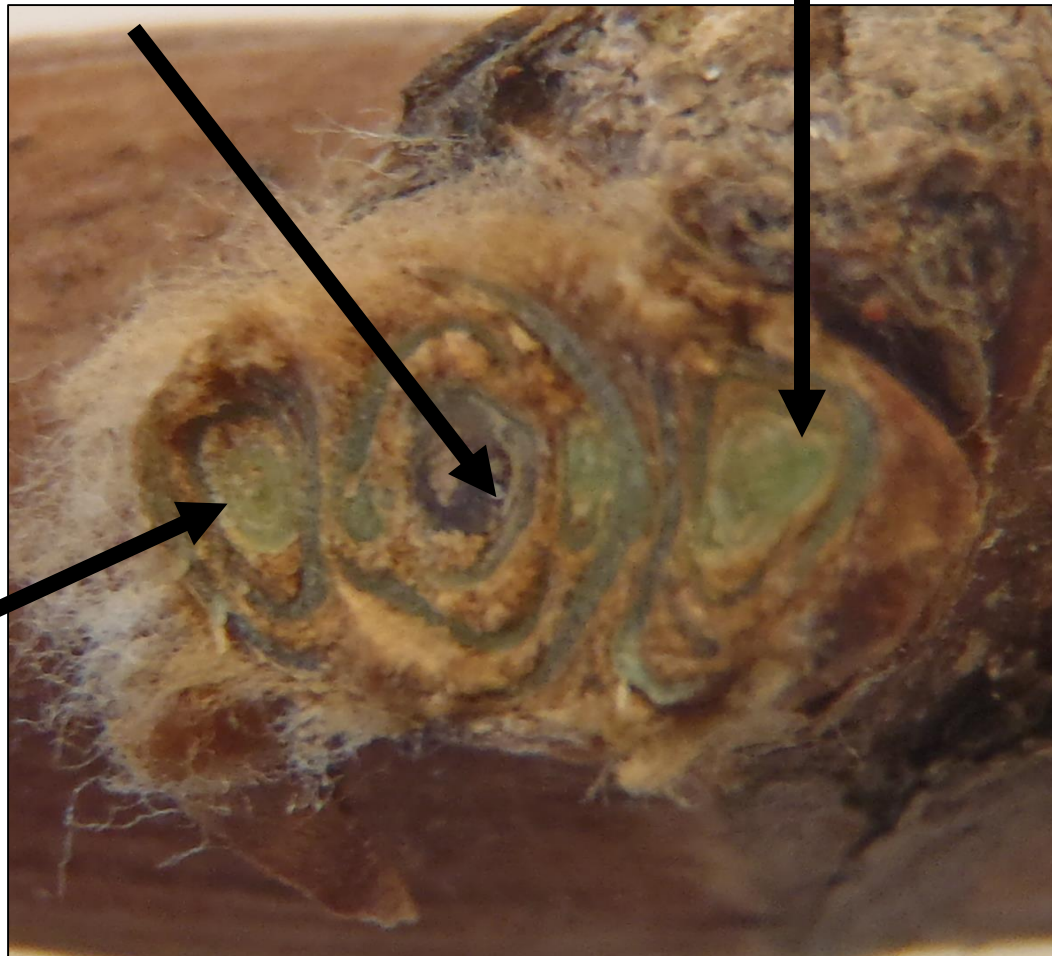


Bud survival



Dead Primary

Live Secondary



Live Tertiary



Intact Bud



First Cut



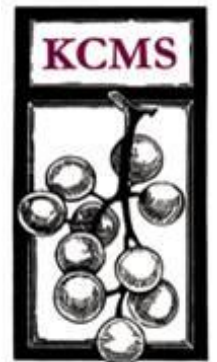
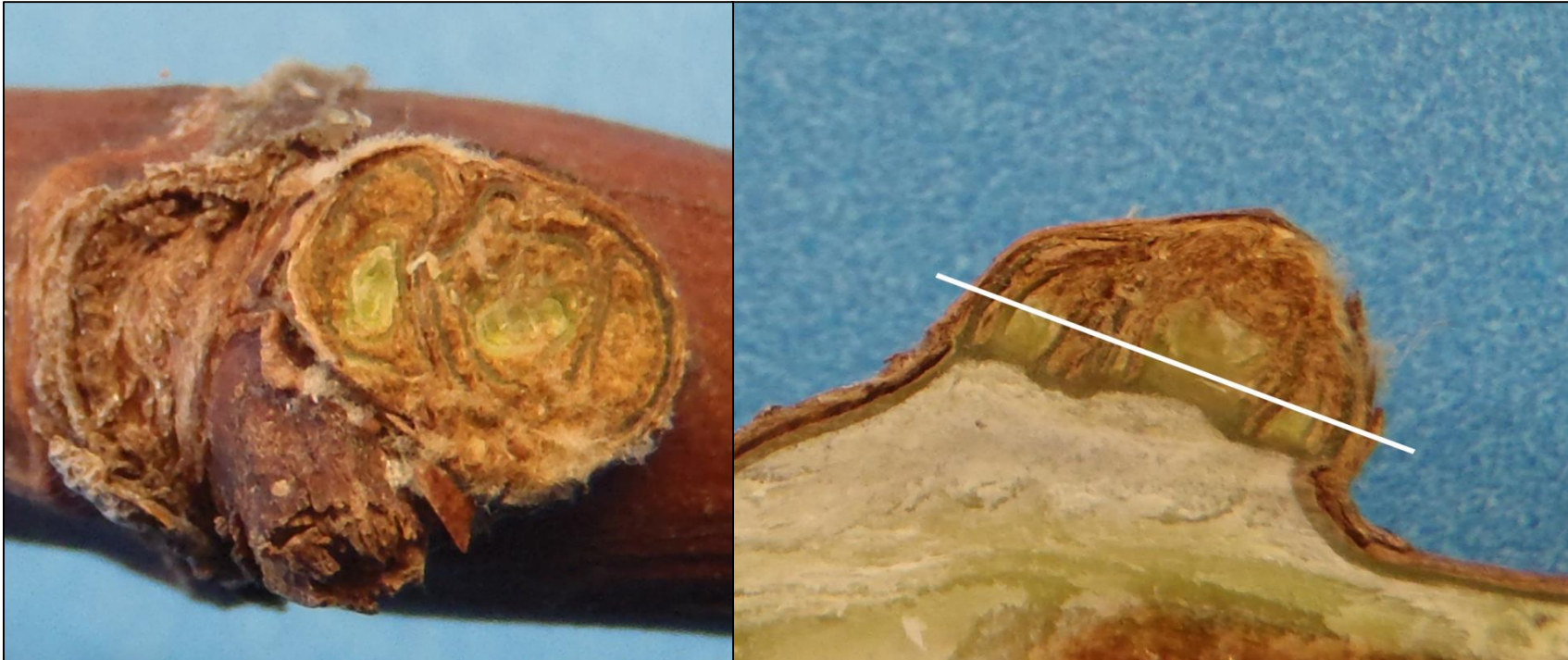
Second Cut



Third Cut



Fourth Cut



Fifth Cut

