

Purpose

To investigate the source localization of the ERN in criminal psychopaths and controls.

Background

Anterior Cingulate Cortex (ACC):

Involved in the processing of cognitive and emotional material.¹
Considered the generator of the error-related negativity (ERN).²

Psychopathy:

Evidence suggests abnormal response monitoring under avoidance learning conditions.³

Evidence suggests abnormal ACC function during processing of affective stimuli^{4,5}

Does increasing the affective component of an error monitoring task result in atypical response monitoring in psychopaths?

Methods

Eriksen Flanker Task

HHHHH
SSSSS
HSHH
SSHSS

Participants

- 7 forensic patients diagnosed with psychopathy (Mean age = 48.9 years, Mean PCL-R score = 31.1)
- 12 control participants (Mean age = 46.58 years)

ERPs

- 128 site Biosemi system
- 512 points per second
- offline filtered 1 to 30 Hz
- Locations of the major generators were modeled on grand average waveforms for each group using Brain Electrical Source Analysis software (BESA 5.0)⁶
- Site co-ordinates were digitized using a Polhemus FASTRAK digital tracker

Procedure: 480 5-letter arrays each presented for 190 ms.
Number of incongruent flanker trials = 320.
Number of congruent flanker trials = 160.
Instructions: Identify central letter by key-press.

Emotion Flanker Task



Procedure: 480 3-face arrays each presented for 390 ms.
Number of incongruent flanker trials = 320.
Number of congruent flanker trials = 160.
Instructions: Identify emotion in central face by key-press.

Results

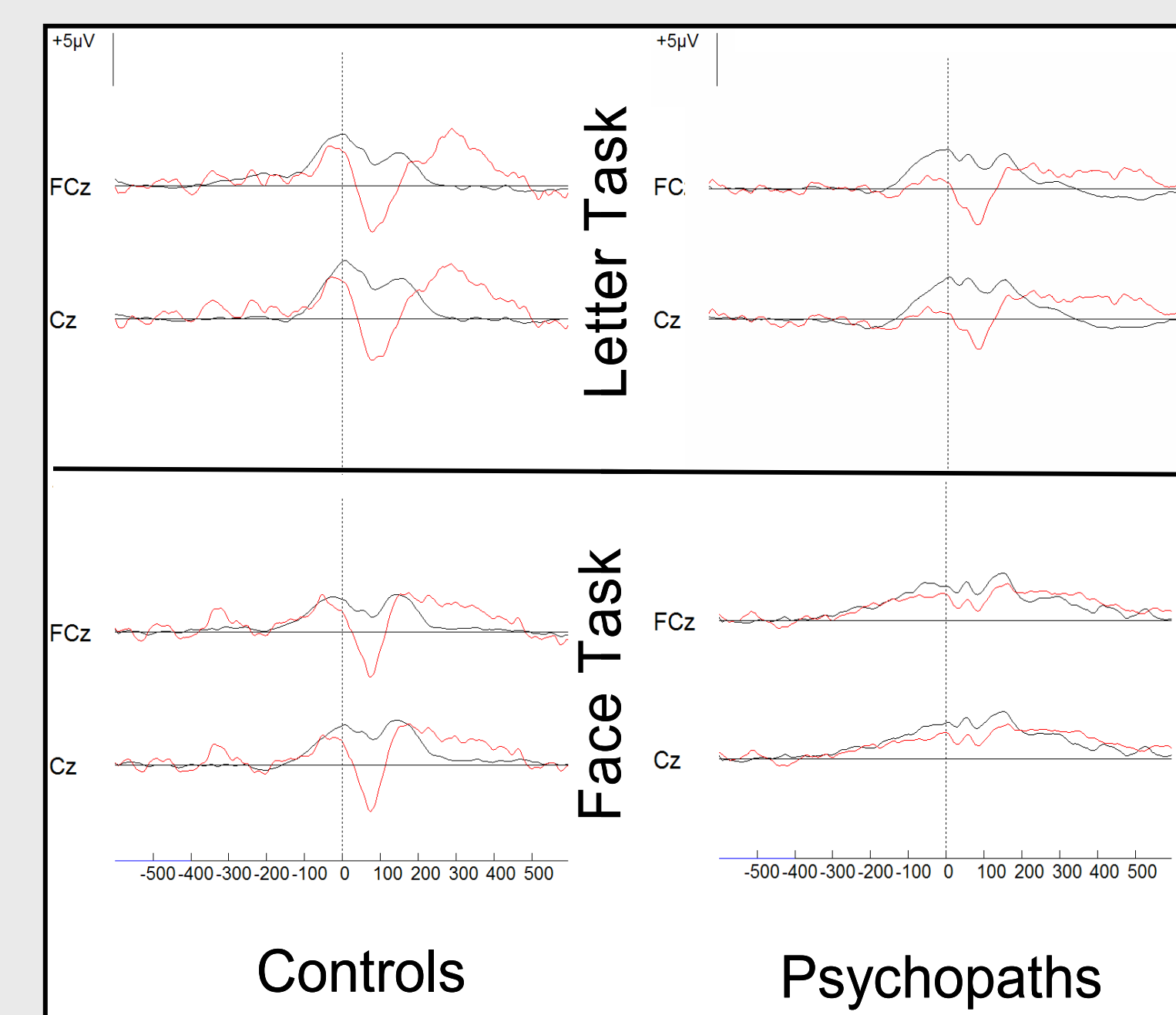
Behaviour:

Group by Task interaction, $p < .01$, indicated that the groups did not differ on the Letter Flanker task but Psychopaths ($M = 15.17\%$) made more errors on the Emotion Flanker task than Controls ($M = 8.13\%$).

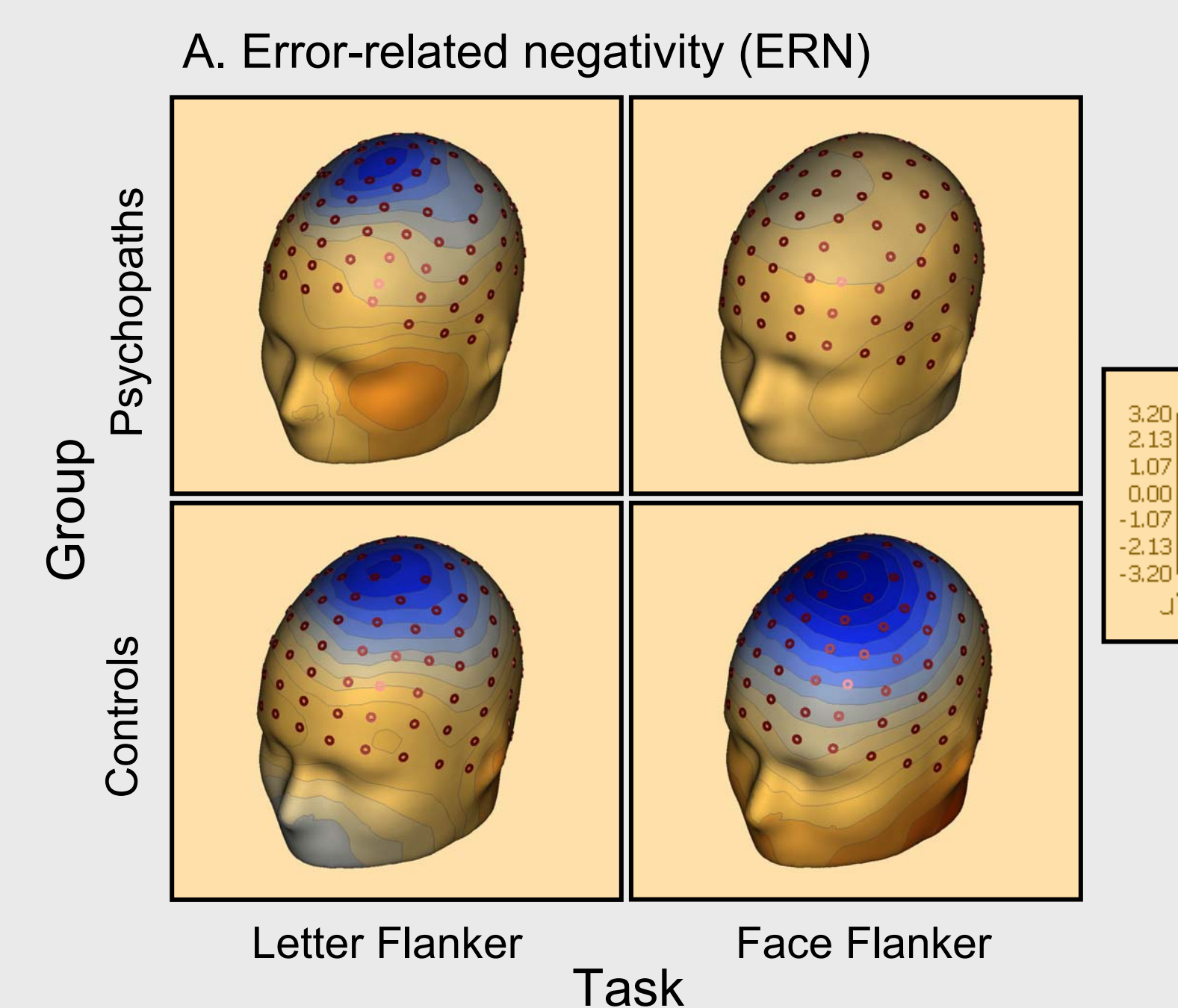
ERNs:

Group by Task interaction, $p = .015$, indicated that Controls produced ERNs of similar amplitude on the Letter and Emotion Flanker tasks. For Psychopaths, Emotion Flanker errors elicited a reduced ERN ($M = 0.46 \mu\text{V}$) compared to errors in the Letter Flanker task ($M = -4.53 \mu\text{V}$).

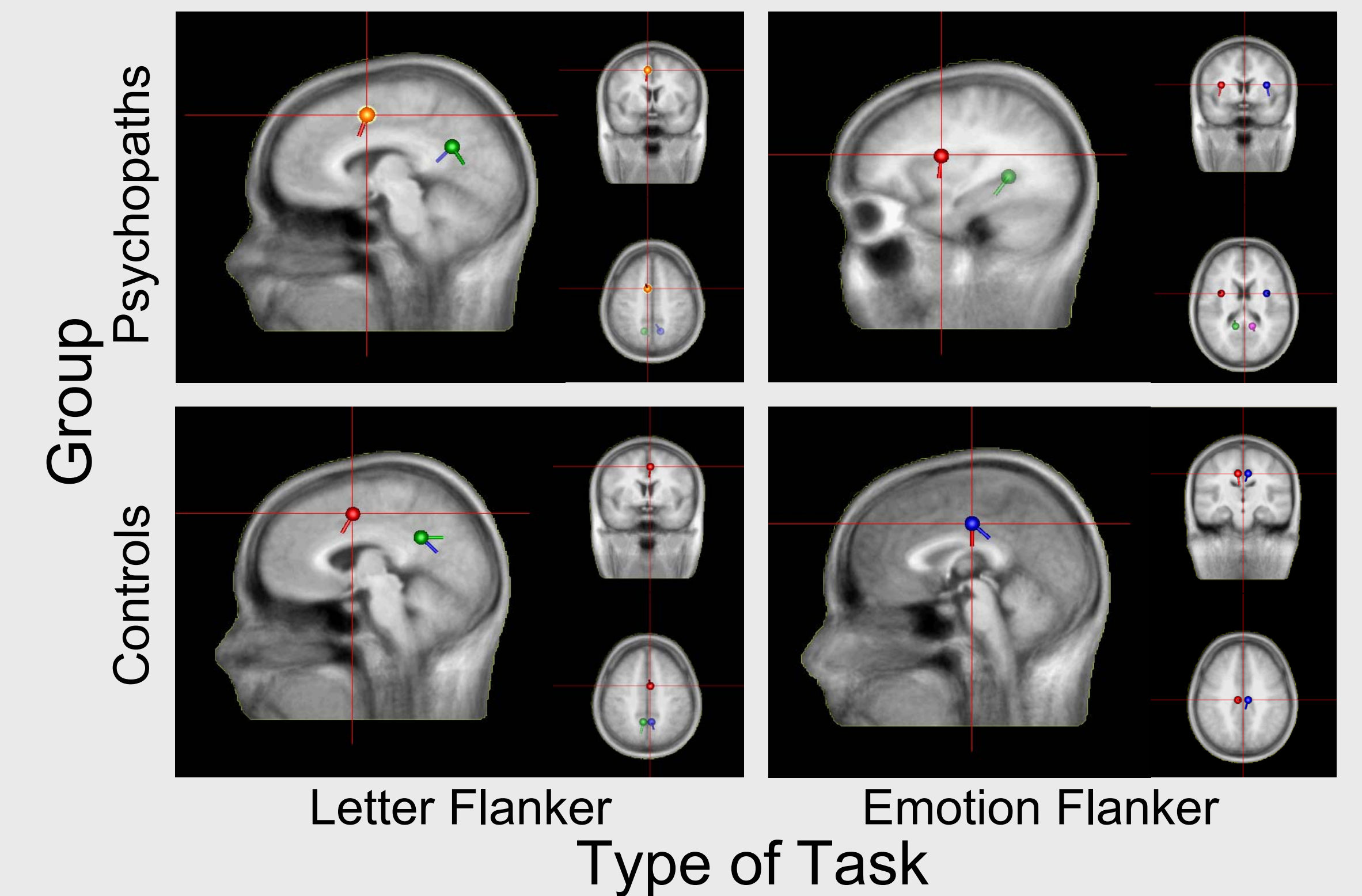
ERNs by Group and Task



Topographical Maps of the ERN by Group and Task



ERN Dipole Sources



Conclusions

Psychopathy is associated with an atypical error monitoring response when affectively-based discrimination is required

Psychopathy may be associated with functional limbic abnormalities during the processing of affective stimuli

This is consistent with the hypothesis that psychopaths use nonlimbic structures to process affective information^{4,7}

Source Modeling—Letter Flanker Task:

Both groups generated

- 2 symmetrical dipoles in the dorsal anterior cingulate cortex
- 1 minor dipole in the posterior cingulate cortex

Source Modeling—Emotion Flanker Task:

Controls generated two symmetrical dipoles in the ventral anterior cingulate cortex

Psychopaths generated two pairs of symmetrical dipoles:

- one major pair in the insula
- one minor pair in the parahippocampal gyrus

References

- ¹ Thayer, J.F., & Lane, R.D. (2000). *Journal of Affective Disorders*, 61, 201-216.
- ² Holroyd, C.B., & Coles, M.G. (2002). *Psychological Review*, 109(4), 679-709.
- ³ Dikman, Z. V., & Allen, J. B. (2000). *Psychophysiology*, 37, 43-54.
- ⁴ Kiehl, K. A. et al. (2001). *Biological Psychiatry*, 50, 677-684.
- ⁵ Muller, J. et al. (2003). *Biol. Psychiatry*, 54, 152-162.
- ⁶ Sherg, M. (2003). BESA (Version 5.0): MEGIS Software GmbH.
- ⁷ Williamson, S., Harpur, T. J., & Hare, R. D. (1991). *Psychophysiology*, 28, 260 - 273.

Acknowledgements: Funded by the Natural Sciences and Engineering Research Council of Canada. Thanks to James Desjardins, Leslie McGregor, and Matt Shane for their assistance and to participants and staff at the Oakridge Division of the Mental Health Centre Penetanguishene

Presented at the 44th Annual Meeting of the Society for Psychophysiological Research, Portugal, Lisbon September 21-24, 2005. Corresponding author: jdywan@brocku.ca