

## **Brock University**

### **Animal-Based Science Statistics**

#### **2024 Review**

Brock University in 2024 had 77 active research and teaching protocols utilizing 4252 animals compared to 3628 animals utilized in 84 protocols in 2023. All protocols were reviewed and approved by the Brock University Animal Care Committee (ACC).

The ACC is mandated to safeguard the welfare of animals involved in research and teaching and reports to the Vice-President, Research. The ACC in conjunction with the animal facilities staff ensure that all animal research conducted at Brock University follows the mandatory guidelines set by the Canadian Council on Animal Care (CCAC), a national body responsible for setting, maintaining and overseeing animal ethics and care in science throughout Canada, as well as the regulations of the Ontario Animals for Research Act.

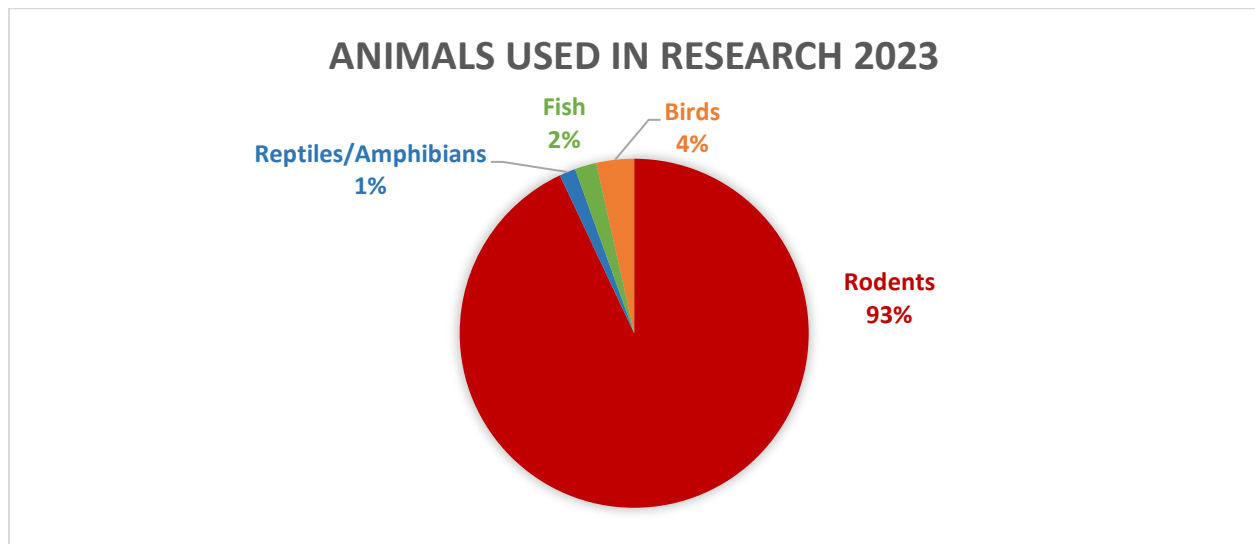
The ACC is composed of representative faculty members, health and safety personnel, community representatives, animal care staff, veterinarians, and graduate students. In addition to ensuring that Brock University's Animal Care and Use Program follows all pertinent regulatory guidelines, the ACC members additionally verify that all personnel working with animals are appropriately trained and qualified to care for the animals under their supervision.

In order for research projects to receive funding from granting agencies, such as the Canadian Tri-Agencies (NSERC/CIHR/SSHRC), they are reviewed by a panel of experts to determine the scientific merit of the proposed project and its methodology. Protocols go through revisions and refinements to meet the satisfaction and approval of the ACC. Each approved protocol is subject to an annual review by the ACC, as well as routine reviews through the post approval monitoring program. All procedures and facilities at Brock University involving animal-based science are rigorously reviewed, inspected and regulated at federal, provincial and institutional levels.

**The animal numbers below reflect both animals used for research at Brock University, as well as animals used in wildlife and field-based studies.**

## 2024 DATA

Animal Type	Number Used	Percent %
Rodents	3935	93
Reptiles/Amphibians	72	1
Fish	95	2
Birds	150	4
<b>Total</b>	<b>4252</b>	<b>100</b>



### **Animals Involved in Research:**

The Canadian Council on Animal Care (CCAC) assigns animal research into five Categories of Invasiveness (A to E).

[https://www.ccac.ca/Documents/Standards/Policies/Categories\\_of\\_invasiveness.pdf](https://www.ccac.ca/Documents/Standards/Policies/Categories_of_invasiveness.pdf)

Category A includes most experiments involving tissue cultures, eggs and single-cell organisms, and does not require annual reporting.

Category B and C, include invasiveness ranged from little discomfort and stress to minor stress and pain. This could include observation in the wild, brief periods of restraint, taking blood samples and/or minor surgical procedures under anesthesia.

Category D Invasiveness involves major surgical procedures under general anesthesia, with use of appropriate analgesia.

<b>Category of Invasiveness</b>	<b>Number of protocols</b>	<b>Percentage</b>
A	1	1
B	28	37
C	31	40
D	17	22
<b>Total</b>	<b>77</b>	<b>100%</b>

### CATEGORY OF INVASIVENESS

