

Brock University Animal-Based Science Statistics

2022 Review

Brock University continued to resume most research protocols in 2022, and a total of 2907 animals were utilized in 78 research and teaching protocols. All protocols were reviewed and approved by the Brock University Animal Care Committee (ACC).

The ACC is mandated to safeguard the welfare of animals involved in research and teaching and reports to the Vice-President, Research. The ACC in conjunction with the animal facilities staff ensure that all animal research conducted at Brock University follows the mandatory guidelines set by the Canadian Council on Animal Care (CCAC), a national body responsible for setting, maintaining and overseeing animal ethics and care in science throughout Canada, as well as to the regulations of the Ontario Animals for Research Act.

The ACC is composed of representative faculty members, health and safety personnel, community representatives, animal care staff, veterinarians, graduate and undergraduate students. In addition to ensuring that Brock University's Animal Care and Use Program follows all pertinent regulatory guidelines, the ACC members additionally verify that all personnel working with animals are appropriately trained and qualified to care for the animals under their supervision.

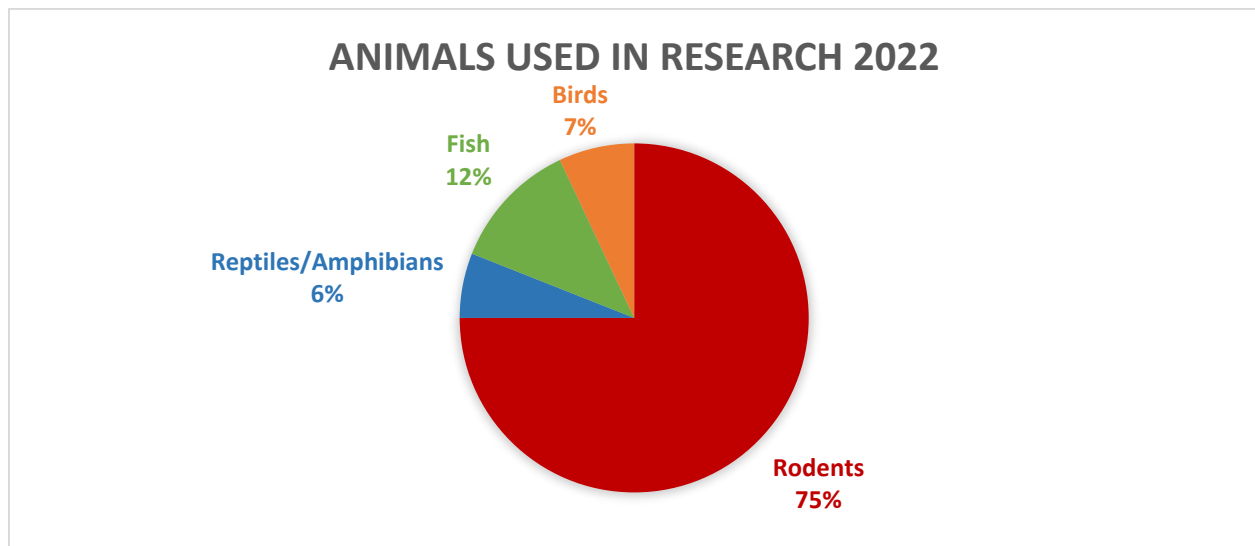
In order for research projects to receive funding from granting agencies, such as the Tri-Agencies Canada (NSERC/CIHR/SSHRC) they are reviewed by a panel of experts to determine the scientific merit of the proposed project and its methodology.

Protocols go through revisions and refinements to meet the satisfaction and approval of the ACC. Each approved protocol is subject to an annual review by the ACC as well as routine reviews through the post approval monitoring program. . All procedures and facilities at Brock involving animal-based science are rigorously reviewed, inspected and regulated at federal, provincial and institutional levels.

The animal numbers below reflect both animals used for research at Brock University as well as animals used in wildlife and field-based studies.

2022 DATA

Animal Type	Number Used	Percent %
Rodents	2170	75
Reptiles/Amphibians	186	6
Fish	358	12
Birds	193	7
Total	2907	100



Animals Involved in Research:

The Canadian Council on Animal Care (CCAC) assigns animal research into five Categories of Invasiveness (A to E).

https://www.ccac.ca/Documents/Standards/Policies/Categories_of_invasiveness.pdf

Category A includes most experiments involving tissue cultures, eggs and single-cell organisms, and does not require annual reporting.

Category B and C, include invasiveness ranged from little discomfort and stress, to minor stress and pain. This could include observation in the wild, brief periods of restraint, taking blood samples and/or minor surgical procedures under anesthesia.

Category D Invasiveness, which involves major surgical procedures under general anesthesia with use of appropriate analgesia.

Category of Invasiveness	Number of protocols	Percentage
A	1	1
B	35	45
C	39	50
D	3	4
Total	78	100%

