

### Isothermal Sections

- Slices or sections cut through a ternary diagram at a constant temperature (**Isotherm**) to examine the phases present and the relationships between phases at that temperature.

Brock University ©2001 G.C. Finn

---

---

---

---

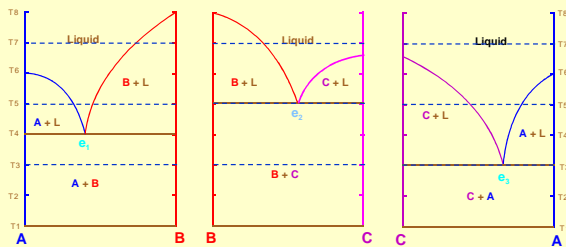
---

---

---

---

### Binary Diagrams - Isotherms



Isotherms at  $T_7$ ,  $T_5$ , and  $T_3$  show phases that are in equilibrium at that temperature.

Brock University ©2001 G.C. Finn

---

---

---

---

---

---

---

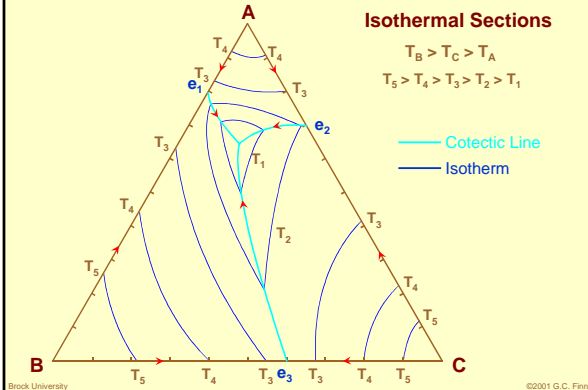
---

### Isothermal Sections

$$T_B > T_C > T_A$$

$$T_5 > T_4 > T_3 > T_2 > T_1$$

— Cotectic Line  
— Isotherm



Brock University ©2001 G.C. Finn

---

---

---

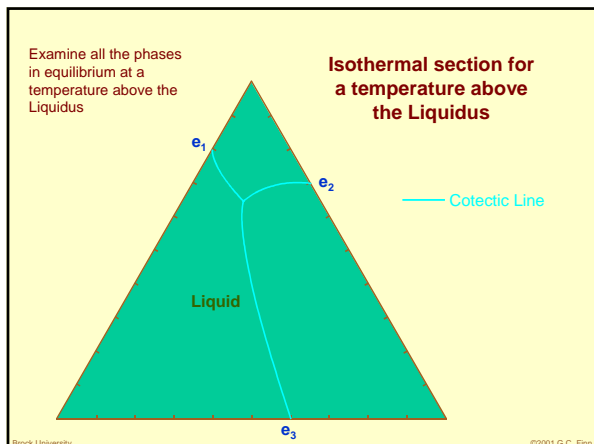
---

---

---

---

---




---

---

---

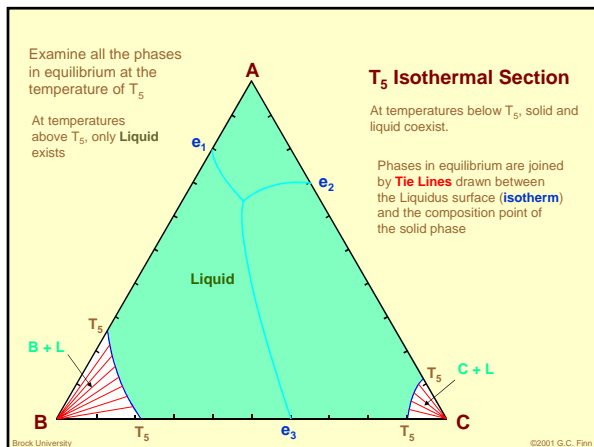
---

---

---

---

---




---

---

---

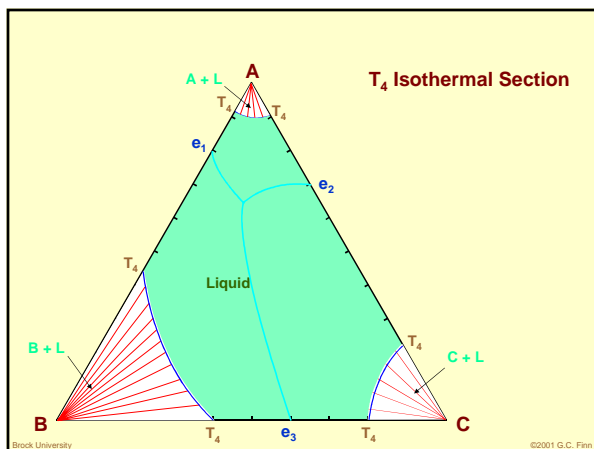
---

---

---

---

---




---

---

---

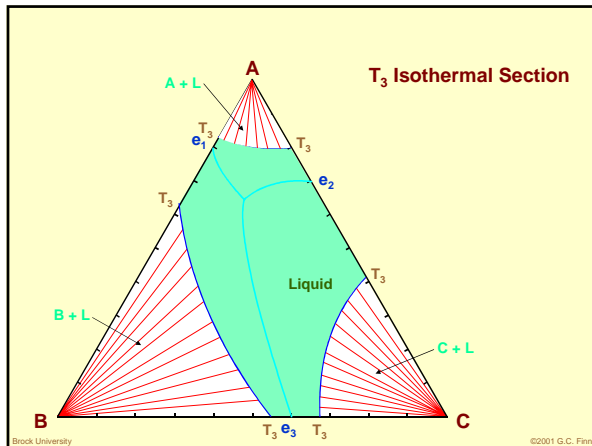
---

---

---

---

---




---

---

---

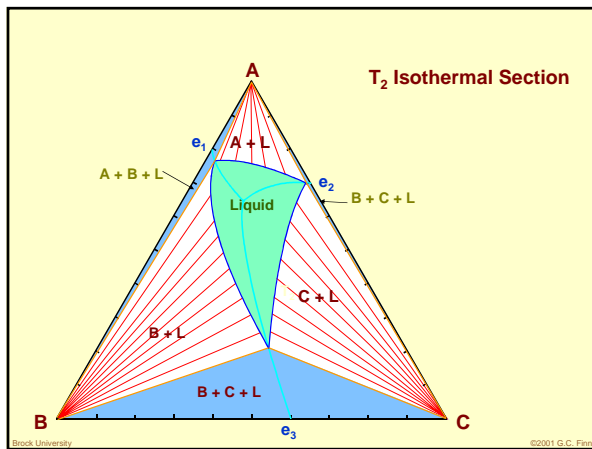
---

---

---

---

---




---

---

---

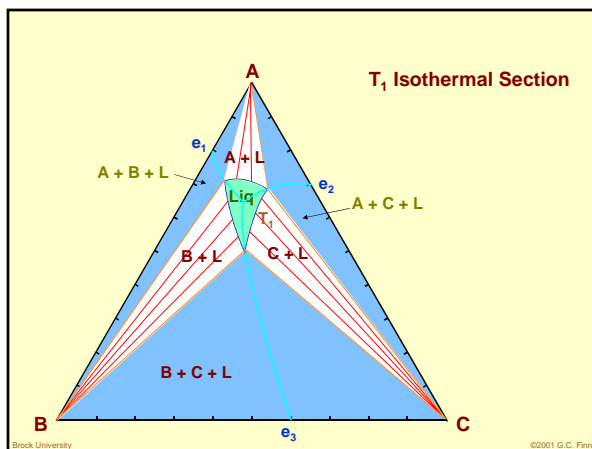
---

---

---

---

---




---

---

---

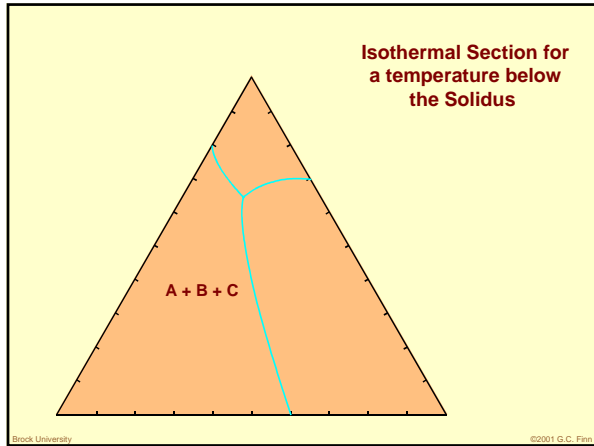
---

---

---

---

---



---

---

---

---

---

---

---

---