

Fo - An - Si Ternary System

Simple Ternary system, with a both a Ternary **Eutectic** and a Ternary **Peritectic**

A binary, intermediate incongruently melting compound (**En**) lies on the Fo-Si join.

Comments:

melting and crystallization are ternary except along the Fo-An join, where spinel appears on the liquidus
the Tie Line joining En-An, divides the triangular area of the Fo-An-Si diagram into two smaller triangular areas

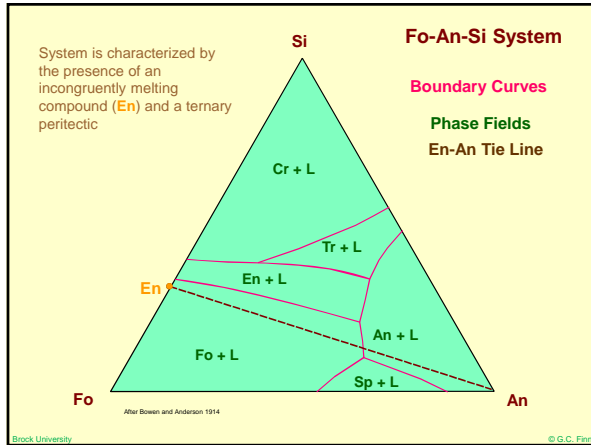
Fo-An-En

Si-En-An

Look at **Equilibrium** and **Fractional** Crystallization in this simple system

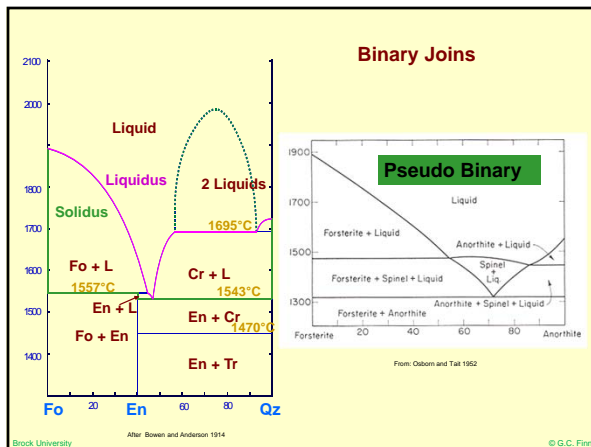
Brock University

© G.C. Finn



Brock University

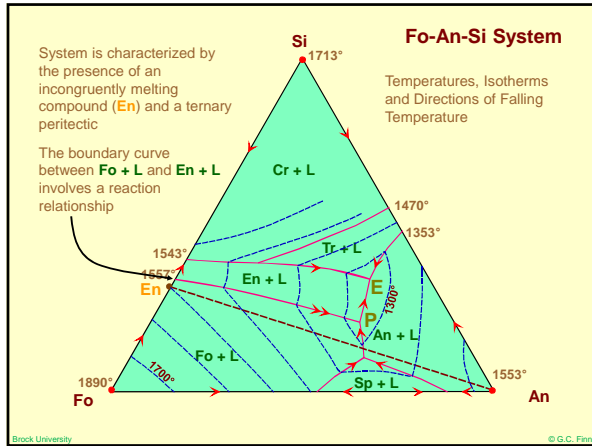
© G.C. Finn

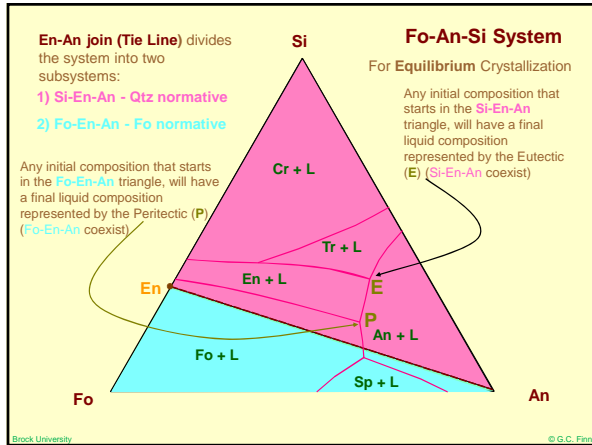


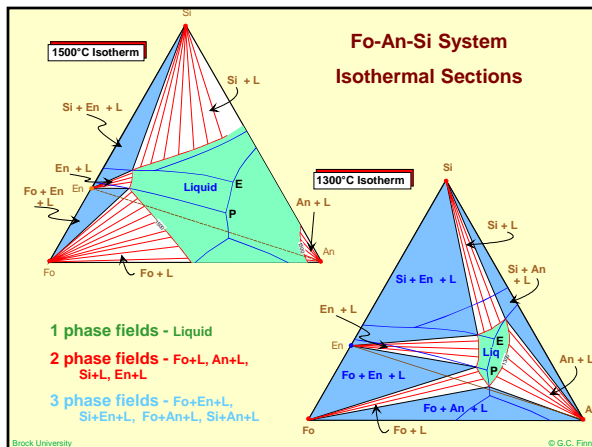
Brock University

© G.C. Finn

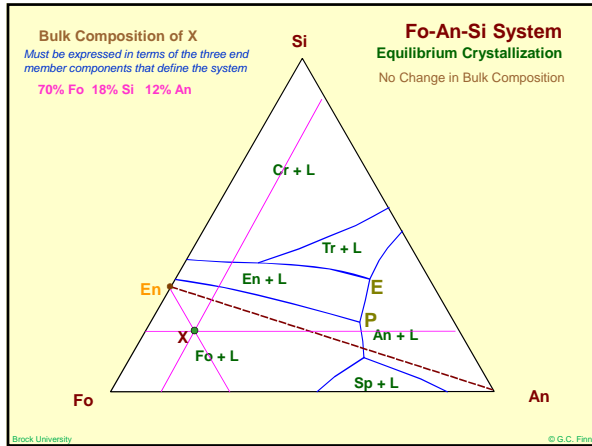
Fo-An-Si System

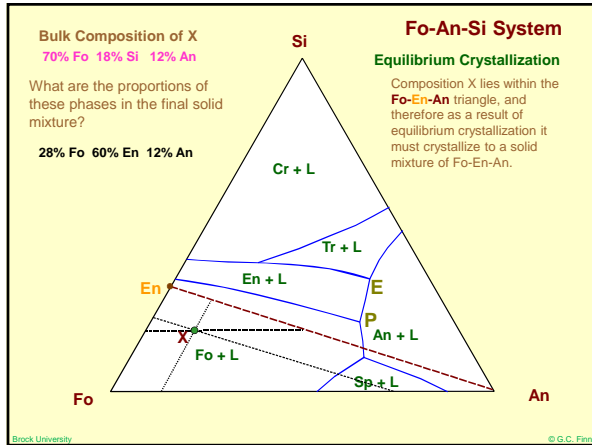


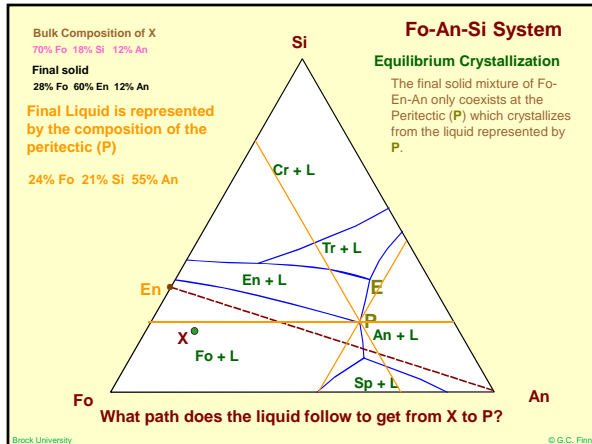




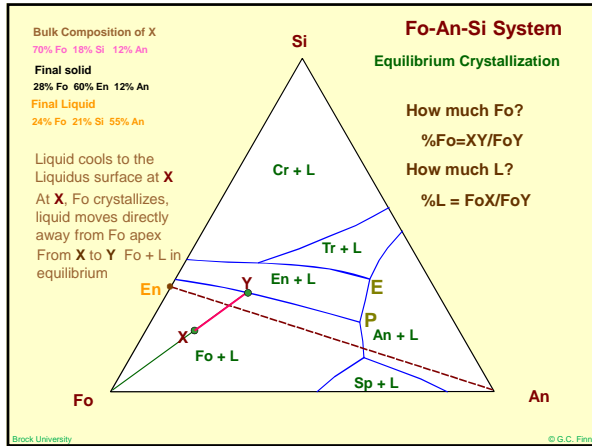
Fo-An-Si System

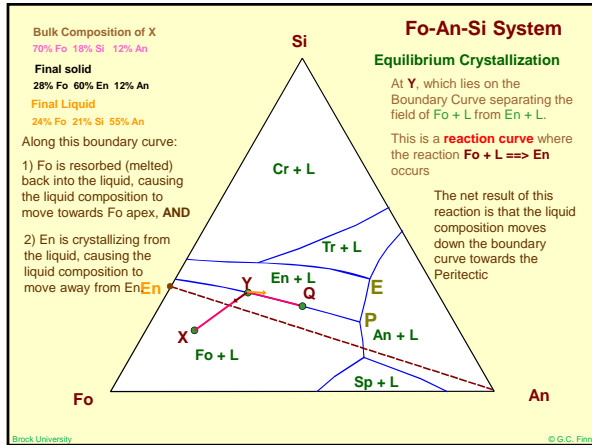


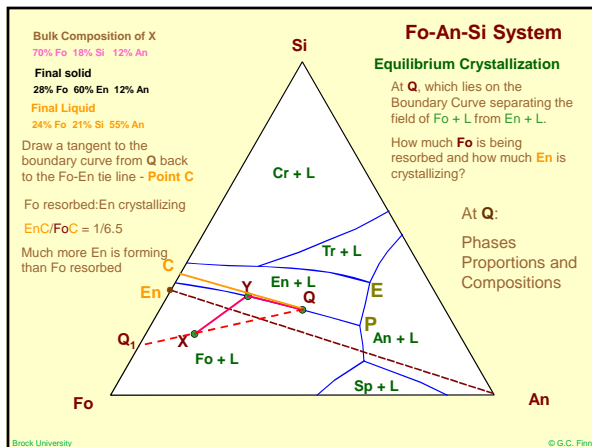




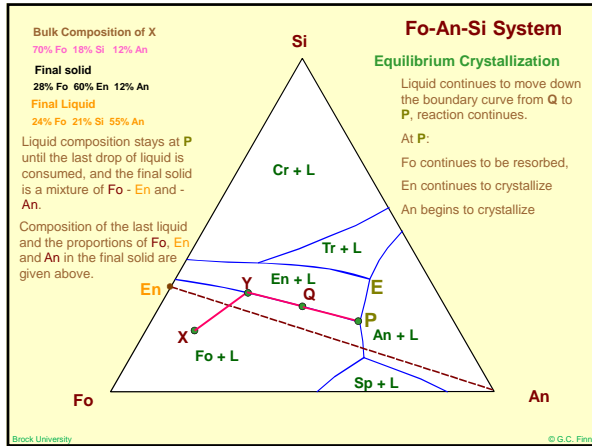
Fo-An-Si System

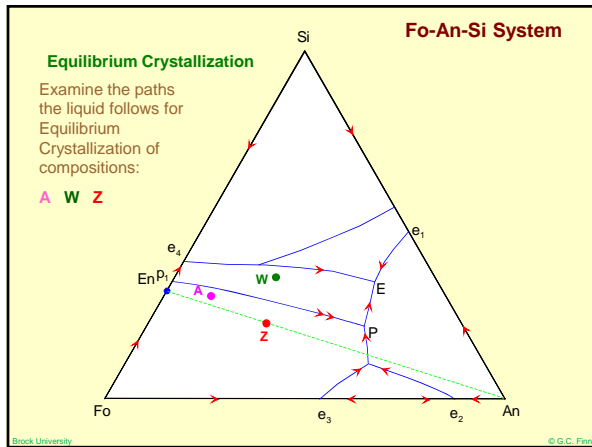


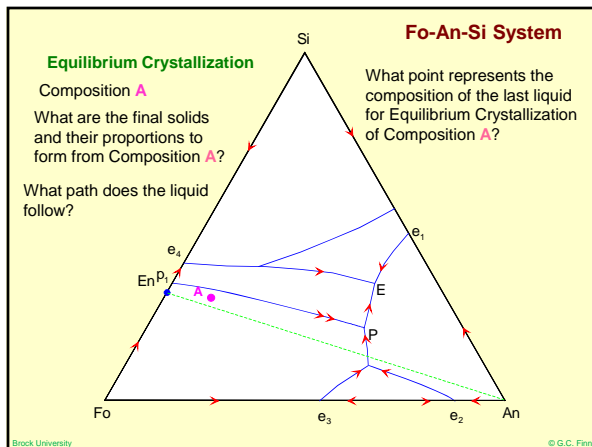




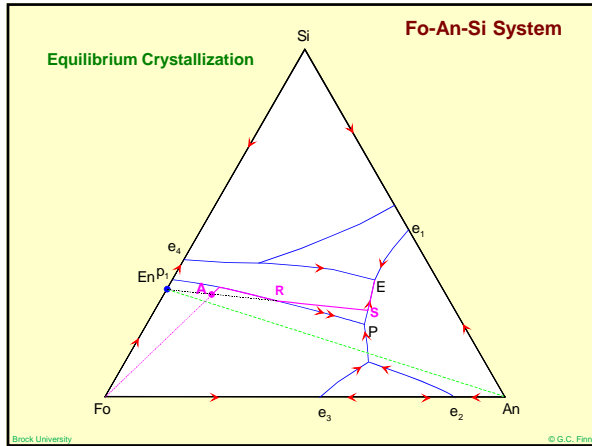
Fo-An-Si System

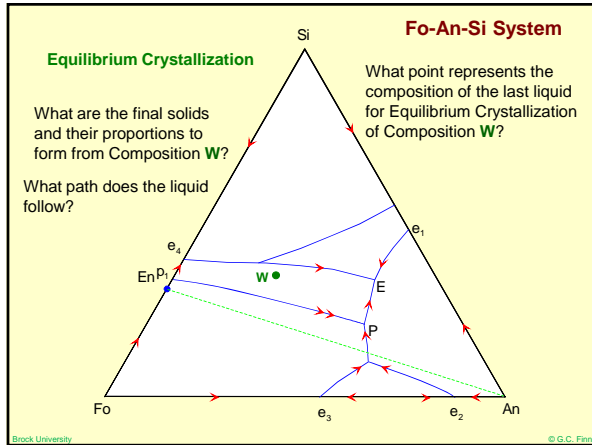


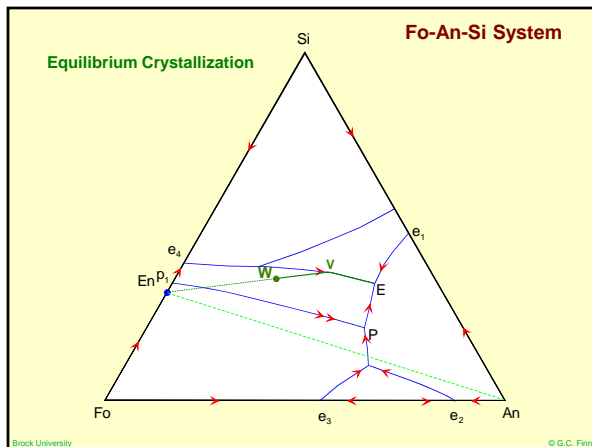




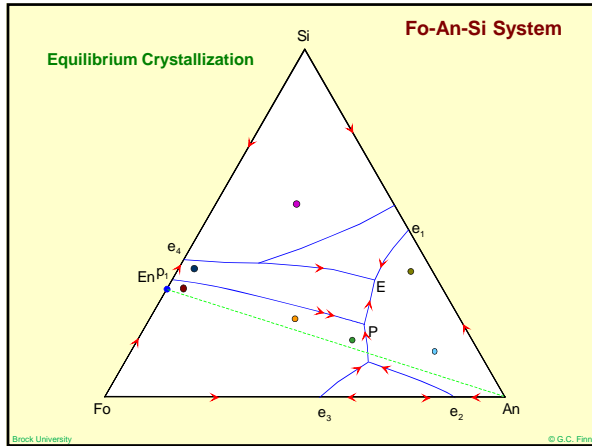
Fo-An-Si System

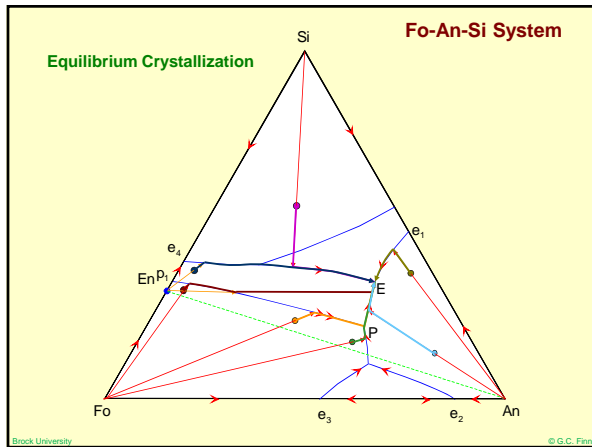


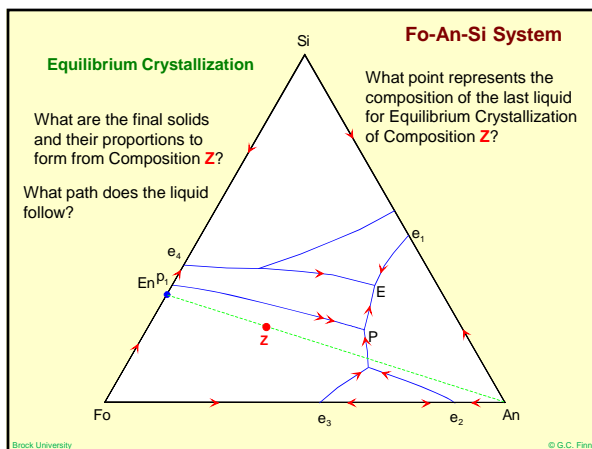




Fo-An-Si System







Fo-An-Si System

