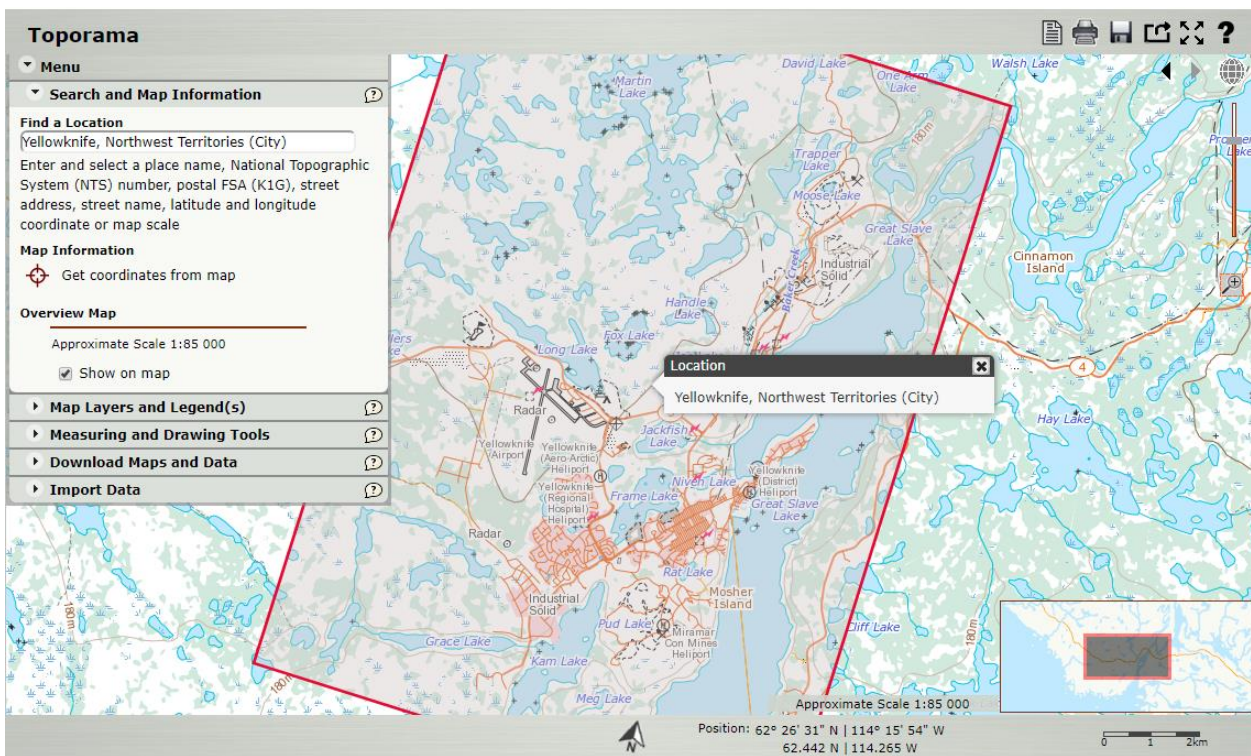


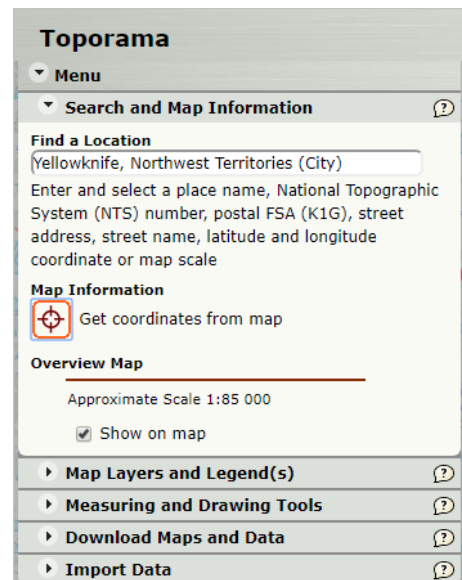
How to Find and Download Topographic (NTS) Maps using Toporama

Part A: Find

1. Go to <http://www.nrcan.gc.ca/earth-sciences/geography/atlas-canada>
2. Click on **Toporama Mapping Tool**.
3. To find the location of Yellowknife, Northwest Territories, type the name in the search bar **Find Location**, and hit enter.
4. The map zooms to the city of Yellowknife.



5. To zoom in and out, use the mouse scroll wheel. To pan the map click and drag.
6. Once the location of interest has been found, click the red target beside “Get coordinates from map” and aim it on the location of interest on the map.
7. Click on the area you are aiming at and a Map Location Information chart will pop up.



- This chart provides information including Geographic Coordinates, UTM Coordinates, NTS Map sheet, UTM Elevation and Magnetic declination.
- Note the NTS Map sheet is 085j08-Yellowknife Bay. (This is the 1:50,000 scale map.)

Part B: Download

- Expand the menu and click on the “Downloaded Maps and Data”
- Click under Raster Maps “Get all maps for all of Canada”.
- This will bring you to Open Government Portal web page. Click on Digital Topographic Raster Maps- ARCHIVED.
- Under the Resource Name, choose either GeoTIF (a georeferenced map which can be used in ArcMap) or a Print Ready PDF format, and click **Access**.
- The number of the map is 085j08. Click on folder with 50k_300dpi. Locate the folder with 085 and click it.

Map location information

Geographic Coordinates

Degrees Decimal
Latitude: 62.467497395405125
Longitude: -114.41192186420334

Degrees Minutes Seconds (DMS)
Latitude: 62° 28' 02.000" N
Longitude: 114° 24' 42.000" W

UTM Coordinates
Zone: 11
Easting: 633449
Northing: 6928935

NTS Mapsheet
085J - YELLOWKNIFE
085J08 - YELLOWKNIFE BAY

Elevation
209 m

Magnetic declination
Date: 2017-10-25
Magnetic declination (DD): 16.457°
Annual change (minutes/year): -19.8

- Next, find the folder with j and click it.
- Next, find the name that has the full map name in it and click on it. Example: canmatrix_085j08_tif.zip
- This downloads as a zip file. The zip file will need to be extracted and saved.
- Open the TIF file and the full topographic map of Yellowknife, including the margin information, will display.

Resource Name	Resource Type	Format	Language	Links
Documentation related to CanMatrix Georeferenced product	Guide	PDF	English French	Access
Documentation related to CanMatrix Print Ready product	Guide	PDF	English French	Access
Documentation related to CanTopo product	Guide	PDF	English French	Access
Download directory to CanMatrix Georeferenced Raster Maps	Dataset	GeoTIF	No linguistic content, Not applicable	Access
Download directory to CanMatrix Print Ready Raster Maps ; TIFF and PDF available	Dataset	ZIP	No linguistic content, Not applicable	Access
Download directory to CanTopo Raster Maps; available formats are PDF, GeoPDF, TIFF and GeoTIFF	Dataset	ZIP	No linguistic content, Not applicable	Access
Index of available files (drag and drop the kml file in Google Earth to localize your region of interest)	Guide	KMZ	No linguistic content, Not applicable	Access

