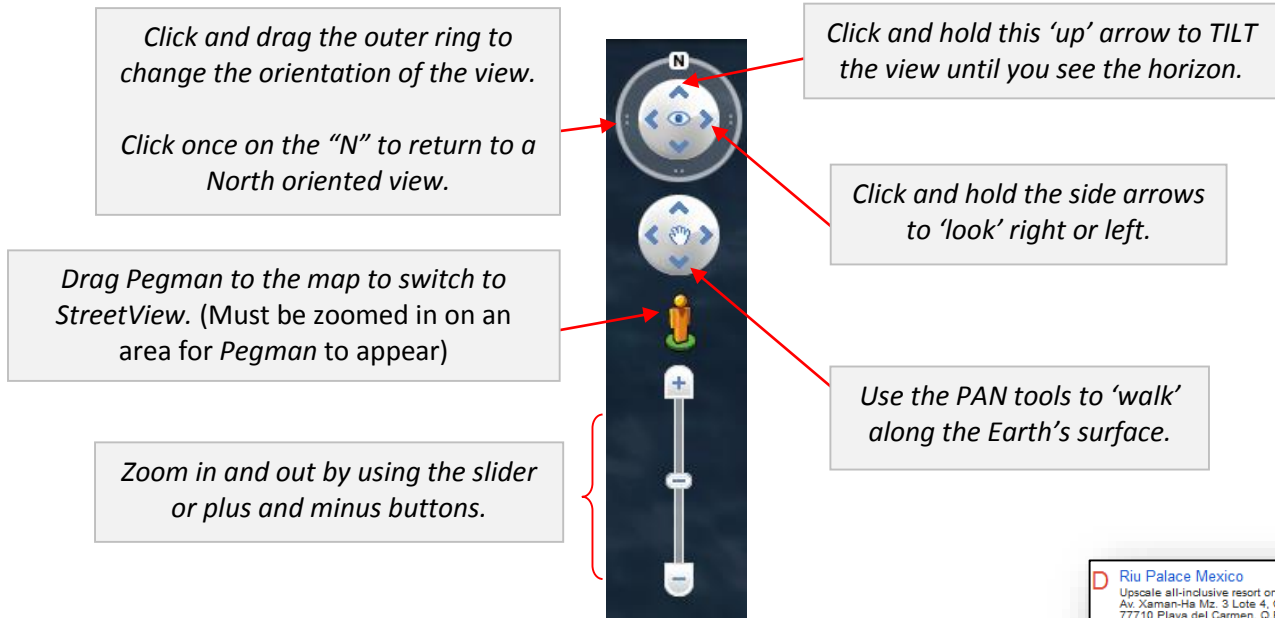


## Instructions for Google Earth

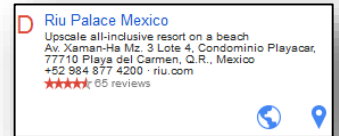
Open Google Earth from: **Start > Google Earth Pro**

### Part 1. Google Earth Basic Navigation



### Part 2. Search for a Resort

- Zoom to a view of North America. In the **Search** box at the top of the pane on the left, enter a resort name and location. For example, "Riu Resorts, Mexico".
- Double-click on a resort from the list. For example, "Riu Palace Mexico". Google Earth will 'fly to' the selected item.
- In the search results listing, click the globe to access the resort website. The website opens within the Google Earth software.
- Click [Back to Google Earth](#) to return to the map.
- Use the Pan and Zoom tools to explore the area.
- Clear the search results by clicking the "X" at the bottom of the SEARCH panel.
- From the **LAYERS** panel, expand the "Gallery" then turn on "Google Earth Community".
- Click on the Community icons on the map to identify locations and resort names.



### Part 3. Adding Features – study area boundary, hotel locations

- From the PLACES panel, right-click **My Places** and select **Add > Folder**. Enter an appropriate name and click OK. The features you create should be listed in this folder.
- To make a study area boundary:** Right-click the [New Folder], select **Add > Polygon**
  - Add a **Name:** Study Area.

From the **Style, Color** tab:

  - Under **Lines**, choose a colour for the border, increase width to 4; and make the fill opacity 100%.



14. Below the HTML tag `<img src=...>` enter a paragraph tag `<p>` then add a basic source statement acknowledging the web link the image was taken from, followed by another paragraph tag. For example:

```
<p>
Image retrieved [current date] from [image url].
<p>
```

15. Insert a link to a webpage using the **Add link...** button. This action uses the URL as the linked text.

16. Customize the text by changing the URL between the HTML tags `<a href="http://...">change this text</a>` such as:

```
<a href="http://www.riu.com">Visit the Official Resort website</a>
```

17. Click OK to return to the map.

18. Click your placemark to see the results.

The image shows two windows from Google Earth. On the left is the 'Edit Placemark' dialog box. The 'Name' field contains 'Riu Palace, Mayan Riviera, Mexico'. The 'Latitude' is '20°36'40.18"N' and the 'Longitude' is '87° 5'8.60"W'. The 'Description' tab is active, showing HTML code for a description, rating, amenities, image, and a link. The 'Add image...' button is highlighted. On the right is a placemark popup window for 'Riu Palace, Mayan Riviera, Mexico'. It displays a photo of a large resort building with a pool. Below the photo, it shows the rating '5 star all-inclusive beach resort', amenities '5 pools, 7 hot tubs, 6 bars, 8 restaurants', and a link to the official Riu Resort website. A black arrow points from the 'Add image...' button in the dialog box to the photo in the popup window.

## Part 5. Saving your work

1. To create a KMZ file, right-click on the project folder and select **Save Place as...**
2. Navigate to your X:/drive and give the file an appropriate name.
3. Once you are sure the KMZ is saved, delete the folder from GE before closing (Right-click > Delete). Click OK when prompted if you are sure you want to delete the folder and its descendants.
4. Click **Save**.
5. ALWAYS Save the most current copy of your kmz file.
6. To open the kmz in GE: **File > Open**. Navigate to your file and click **Open**. Your file will appear in *Temporary Places*.
7. Right-click the file and **Save to My Places**. Re-save your work (step 1-3) when you are finished with GE.
8. Follow the details outlined in the assignment for submitting your kmz file.

9. Questions or troubles? [maplib@brocku.ca](mailto:maplib@brocku.ca)

**A Note about copyright:**

<http://brocku.ca/library/campus-copyright-information/brock-copyright-faq#use>

**Is it permissible for students to use copyrighted materials in assignments and presentations?**

Yes!

Under the fair dealing exception, students may use works for the purpose of research, private study, criticism, review, or education. So, provided the student is including the work for one of these purposes, and acknowledges the author and source of the material, and the use could be characterized as fair, it will likely be covered by the fair dealing exception.