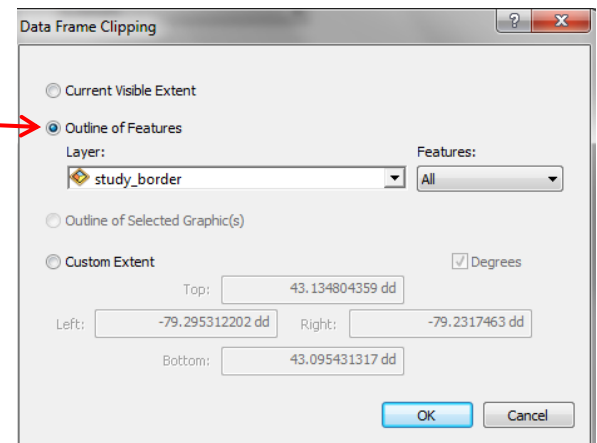
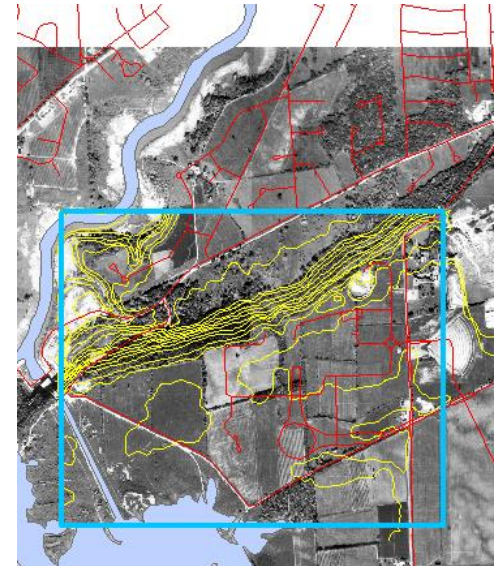
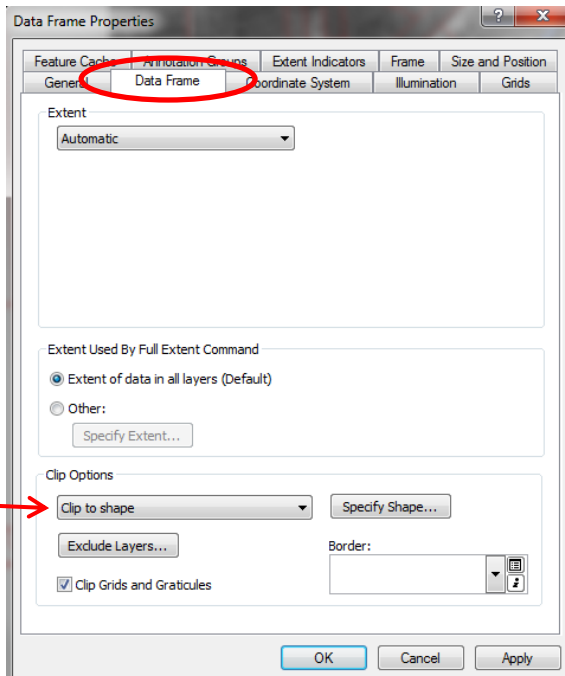


Clipping Data Frame View

Introduction: The following steps provide a ‘virtual clip’ option that limits the display of layers to a defined study area.

1. Run ArcMap.
2. Add data layers to be used on map. Notice the study area isn't consistent across all layers.
3. Right-click the data frame and select **Properties**.
4. Select the **Data Frame** tab.



5. Under Clip Options, select “Clip to shape” from the dropdown list.
6. Click “Specify Shape...”
7. Select “Outline of Features” then, choose the layer representing the study area.
8. Click OK.
9. Click OK a second time to return to the map view. All layers are virtually ‘clipped’ to display only the study area.

