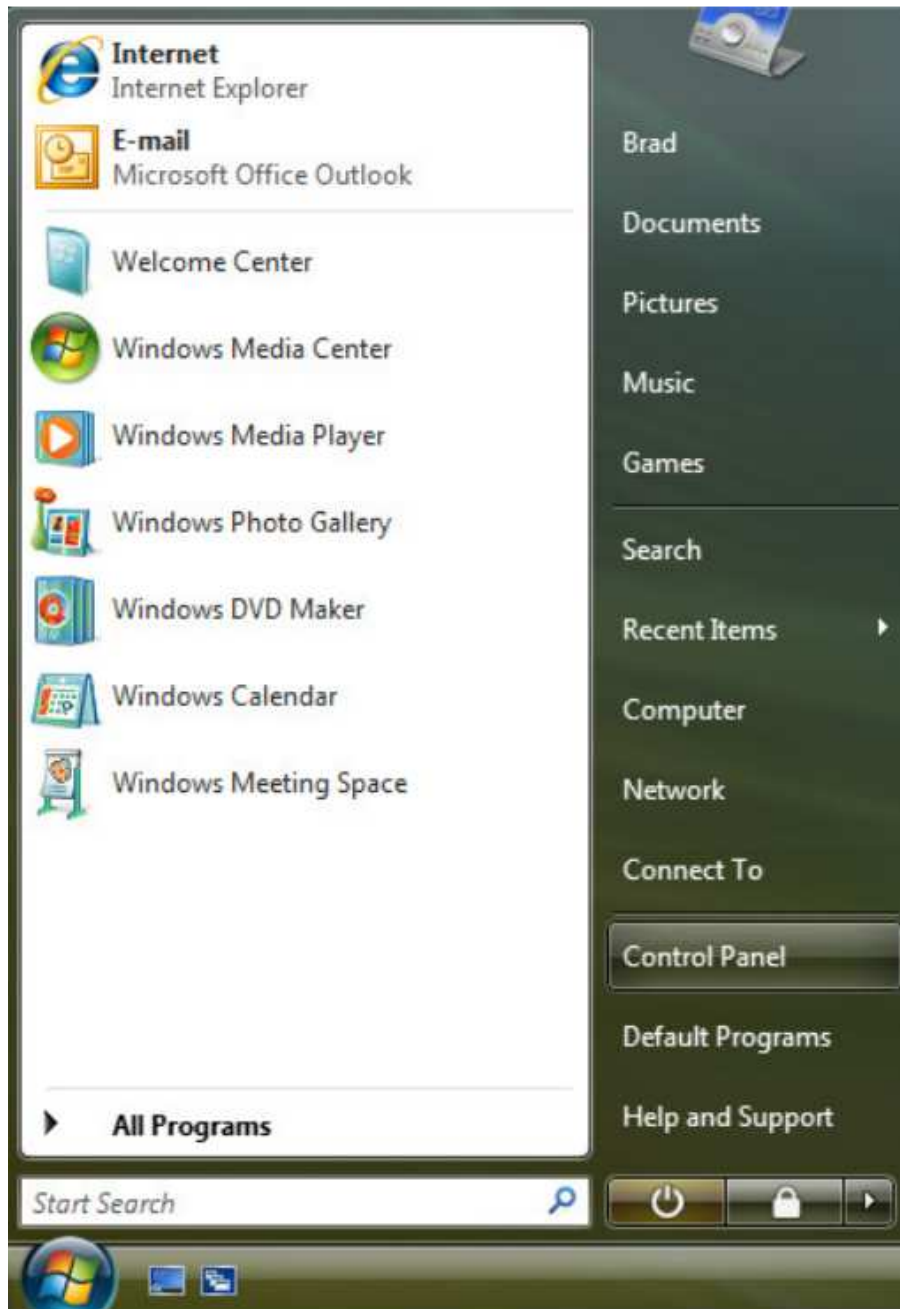


## Configuring BrockWiFi on Windows 7

Windows 7 will automatically search for any available wireless connections when you power on your wireless network card. If a wireless connection has been found, Windows 7 will inform you that a connection has been made. But you will still need to set up the PEAP configuration.

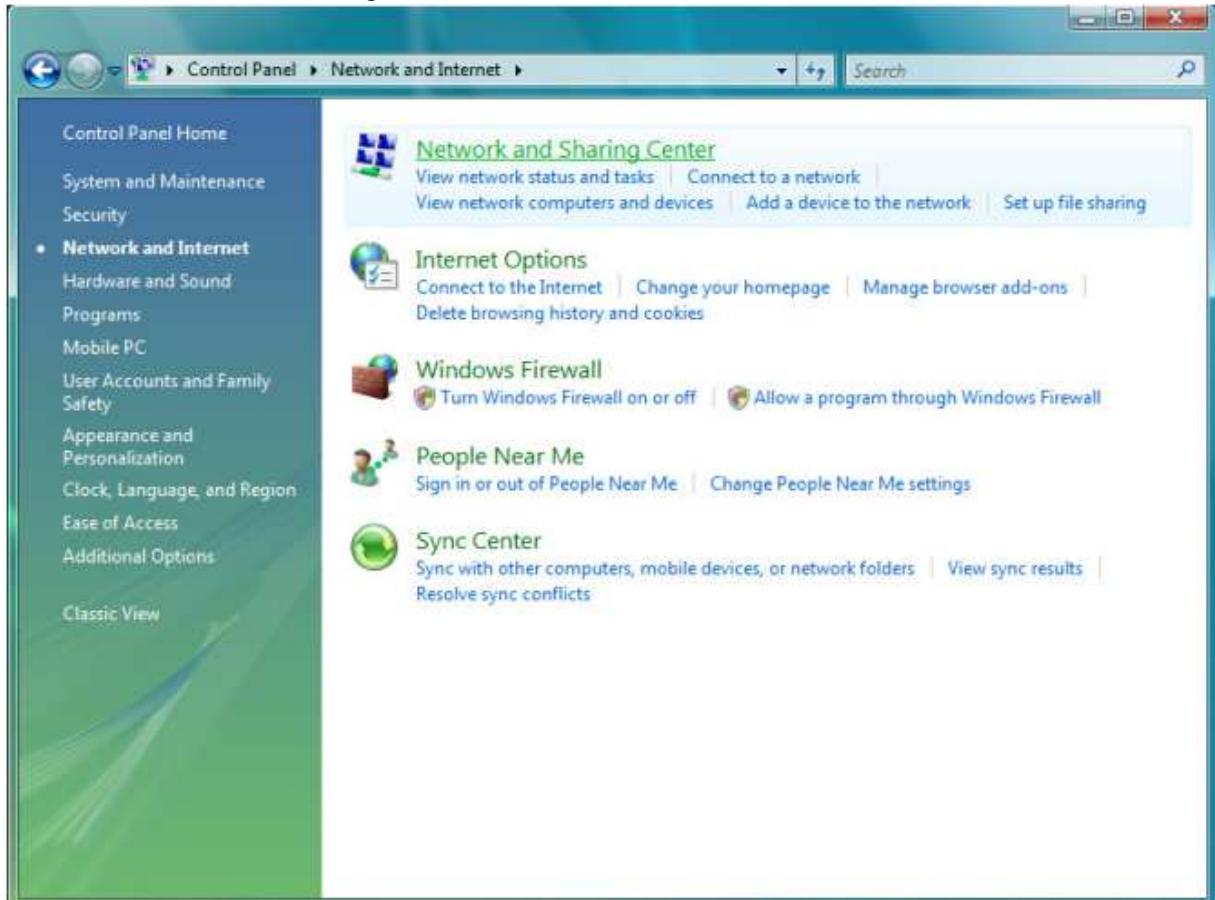
Click on *Start* then click *Control Panel*



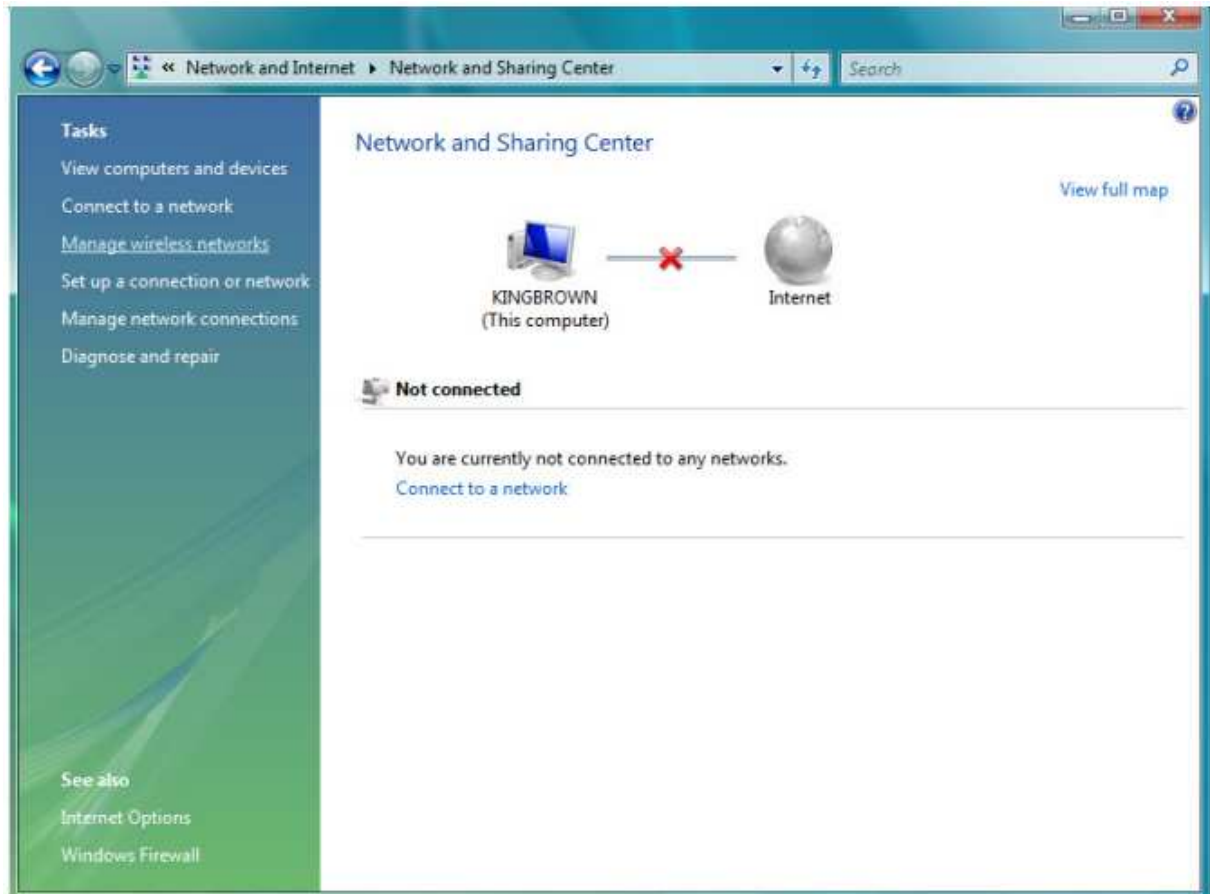
In the Control Panel click on *Network and Internet*.



Click on *Network and Sharing Center*.



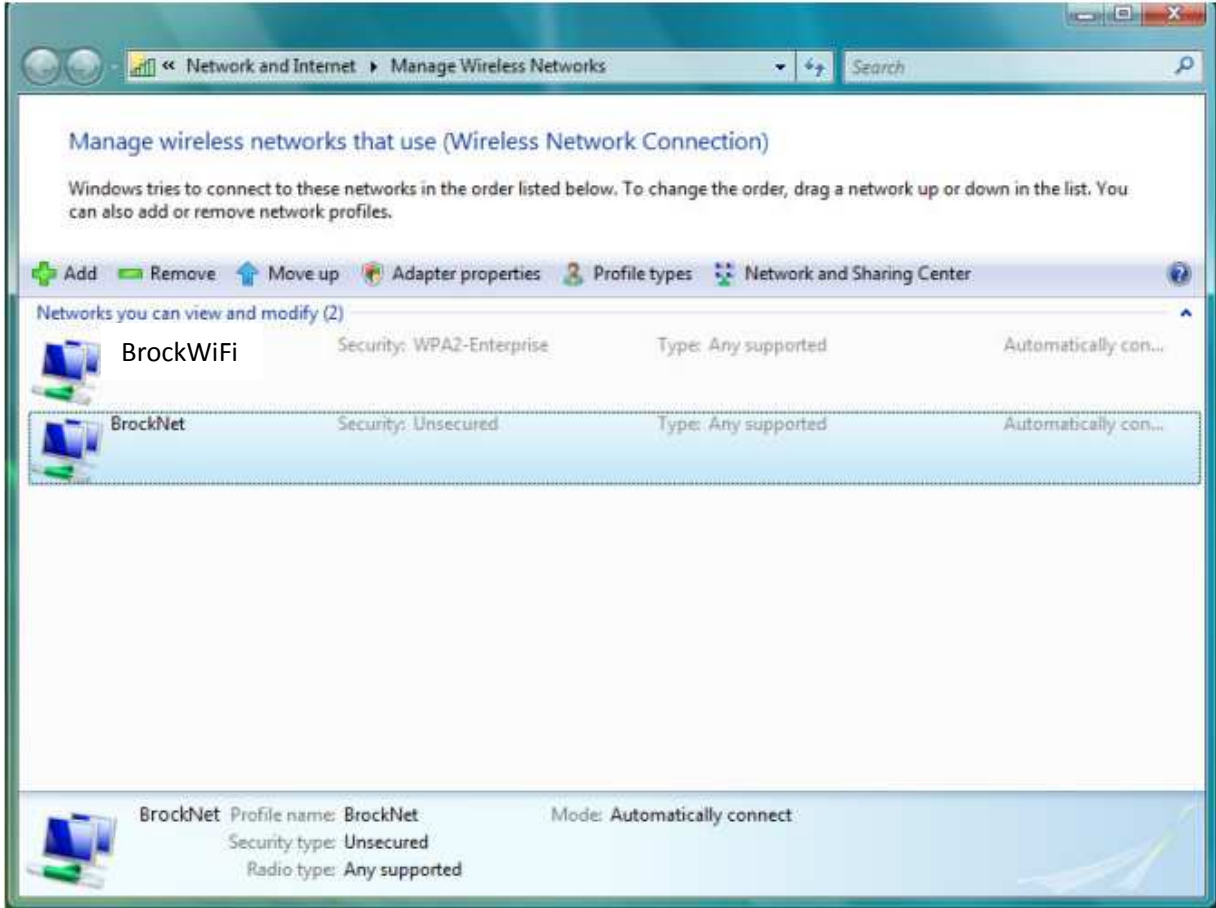
Click on *Manage wireless networks*.



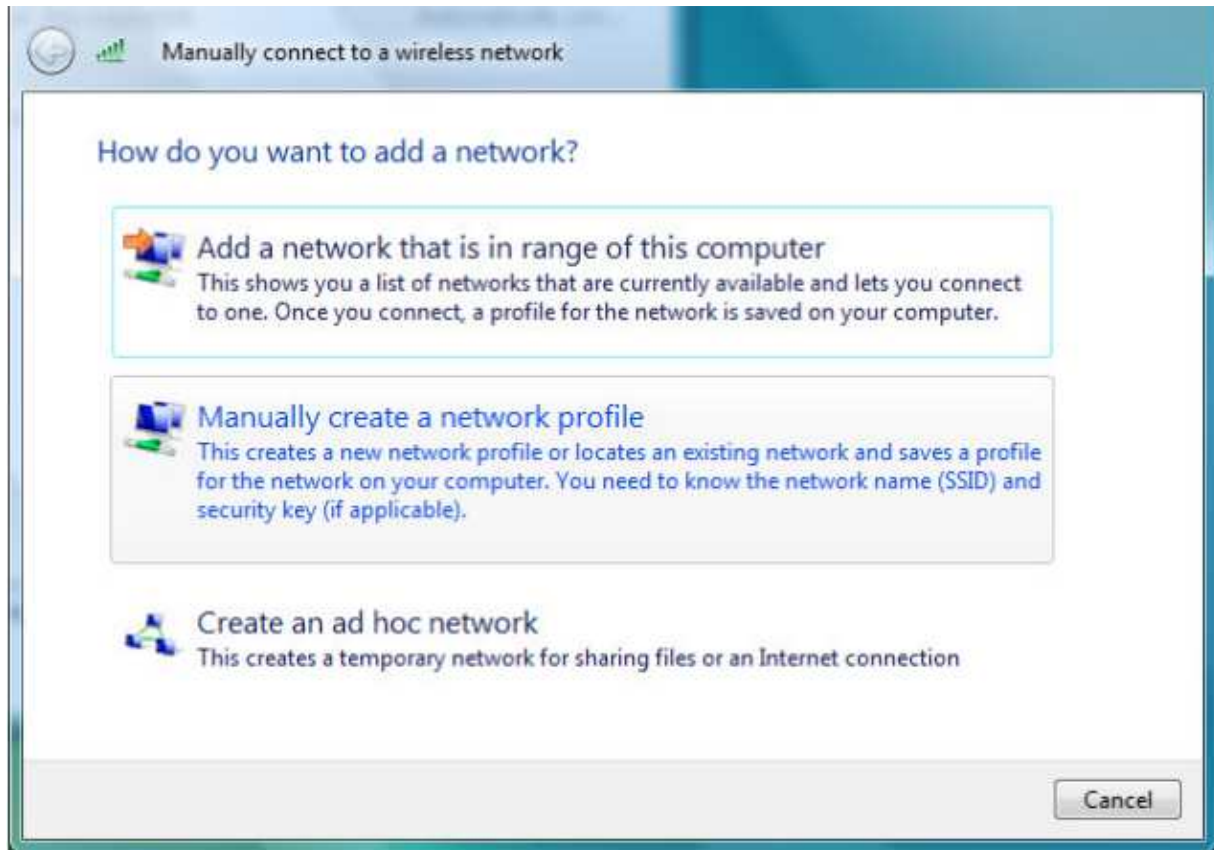


Connecting to BrockWiFi on Windows 7  
Date: August 4, 2015

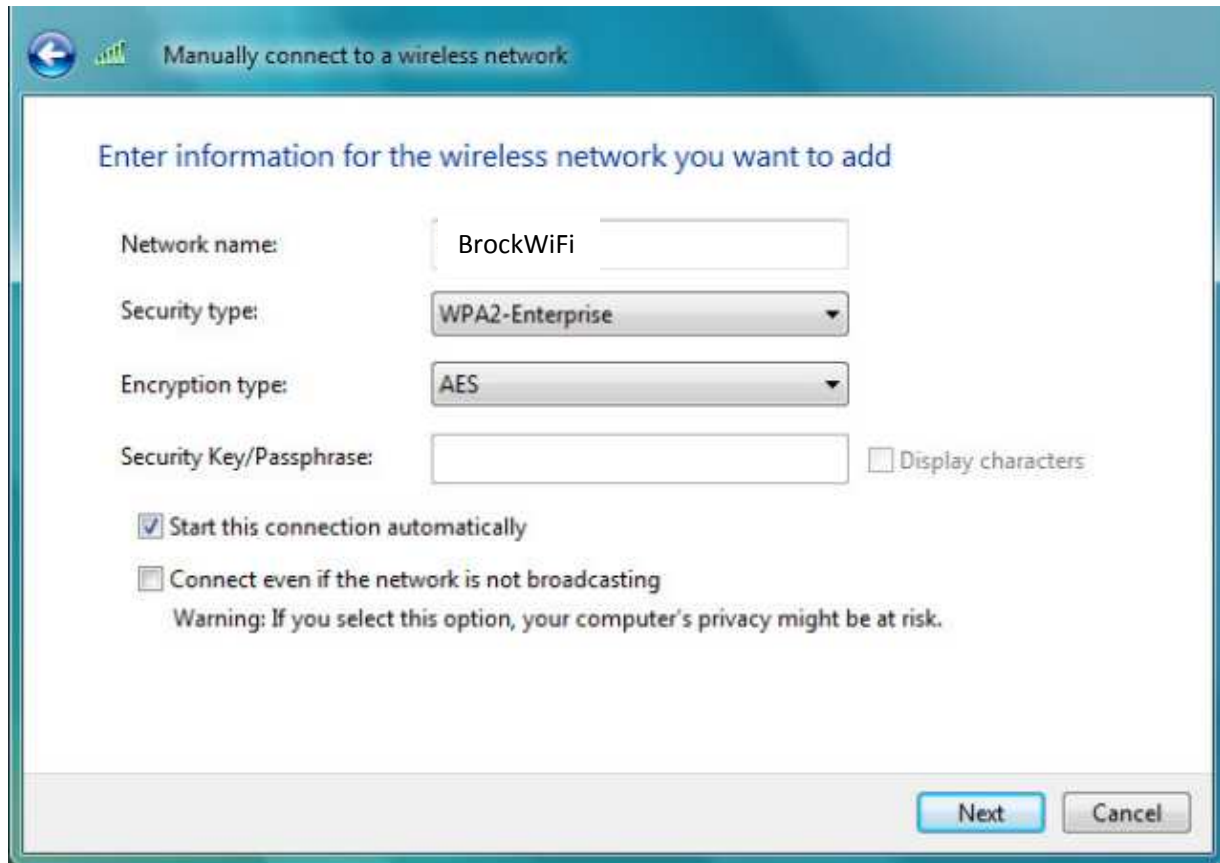
Click on *Add*.



Click on *Manually create a network profile*.



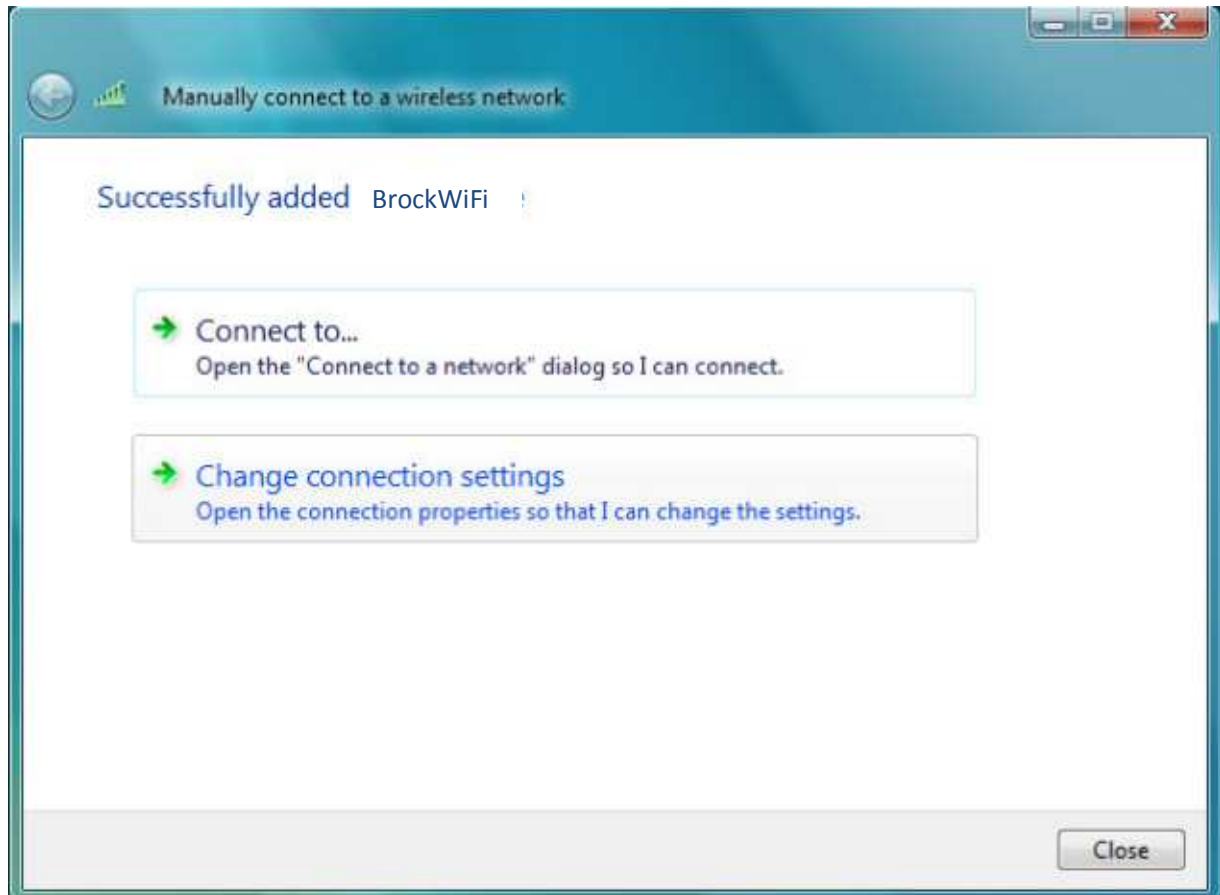
Make sure you have the following settings entered correctly. Click on *next*.

A screenshot of the Windows 7 network configuration dialog box titled "Manually connect to a wireless network". The dialog box has a blue header bar with a back arrow icon and a signal strength icon. The main content area is white and contains the following fields and options:

- Network name:** A text input field containing "BrockWiFi".
- Security type:** A dropdown menu set to "WPA2-Enterprise".
- Encryption type:** A dropdown menu set to "AES".
- Security Key/Passphrase:** An empty text input field with a "Display characters" checkbox to its right, which is currently unchecked.
- Start this connection automatically**
- Connect even if the network is not broadcasting**  
Warning: If you select this option, your computer's privacy might be at risk.

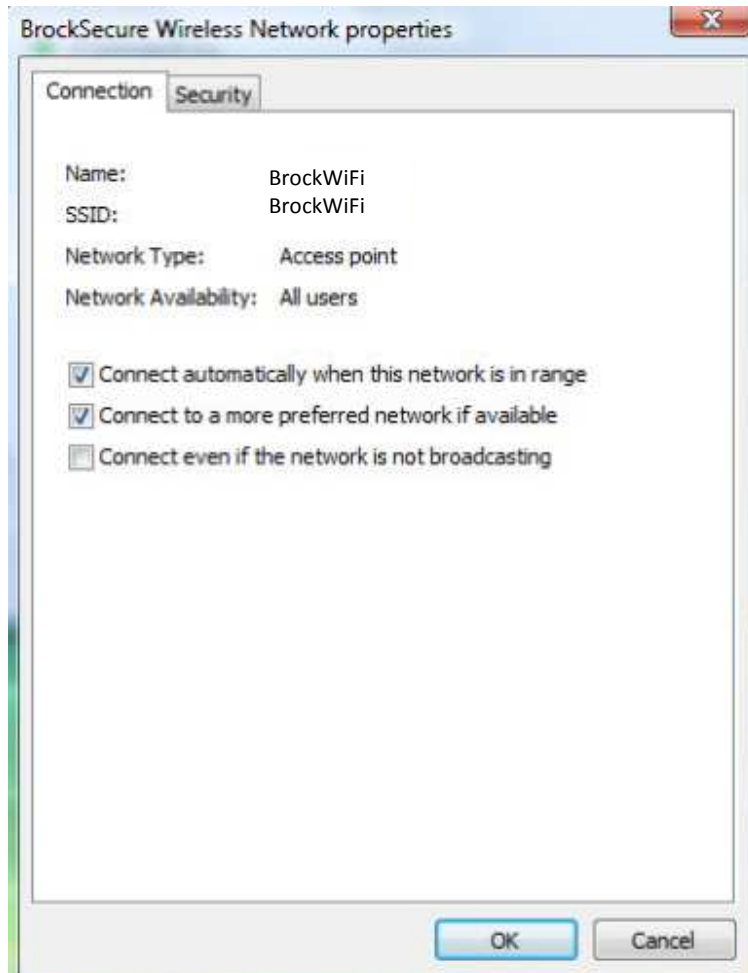
At the bottom right of the dialog box, there are two buttons: "Next" (highlighted in blue) and "Cancel".

Click on *Change connection settings*.





Make sure the following settings are entered correctly.



Click on the *Security* tab.

The Wireless Network Properties box shows up. Make sure the following settings are correct:

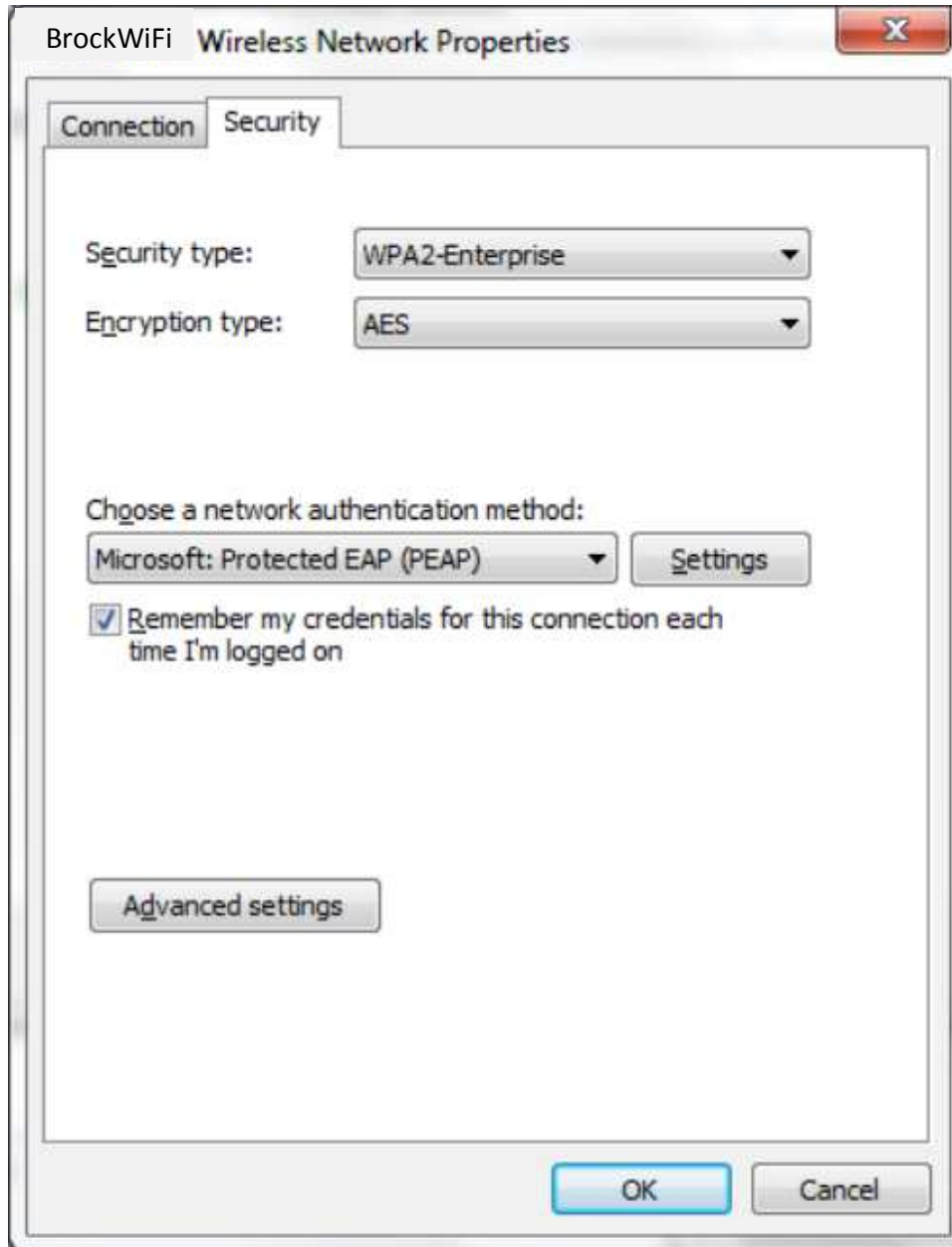
Network Name (SSID): BrockWiFi Network

Authentication: WPA2Enterprise

Data Encryption: AES

Choose a network authentication method: Protected EAP (PEAP)

Then click on the *Settings* button.



The Protected EAP Properties box pops up. Make sure the following settings are configured:

Ensure that the Selected Authentication method is Secure password (EAPMSCHAP v2) and that there are no checkmarks for any of the options.

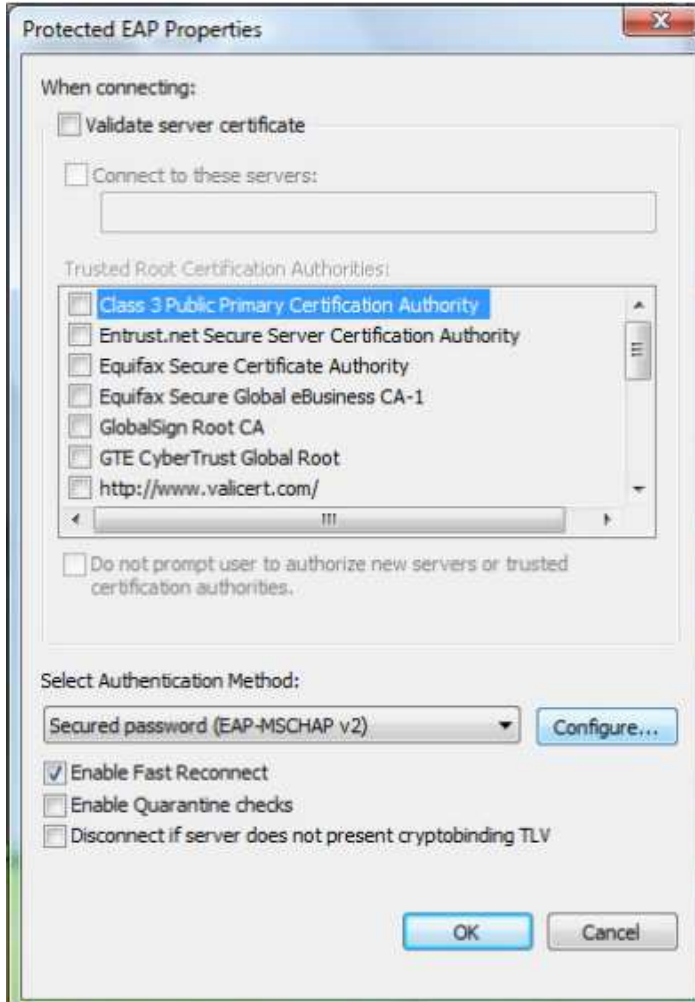
Enable Fast Reconnect is optional.



## Connecting to BrockWiFi on Windows 7

Date: August 4, 2015

Click on the *Configure* button to continue.

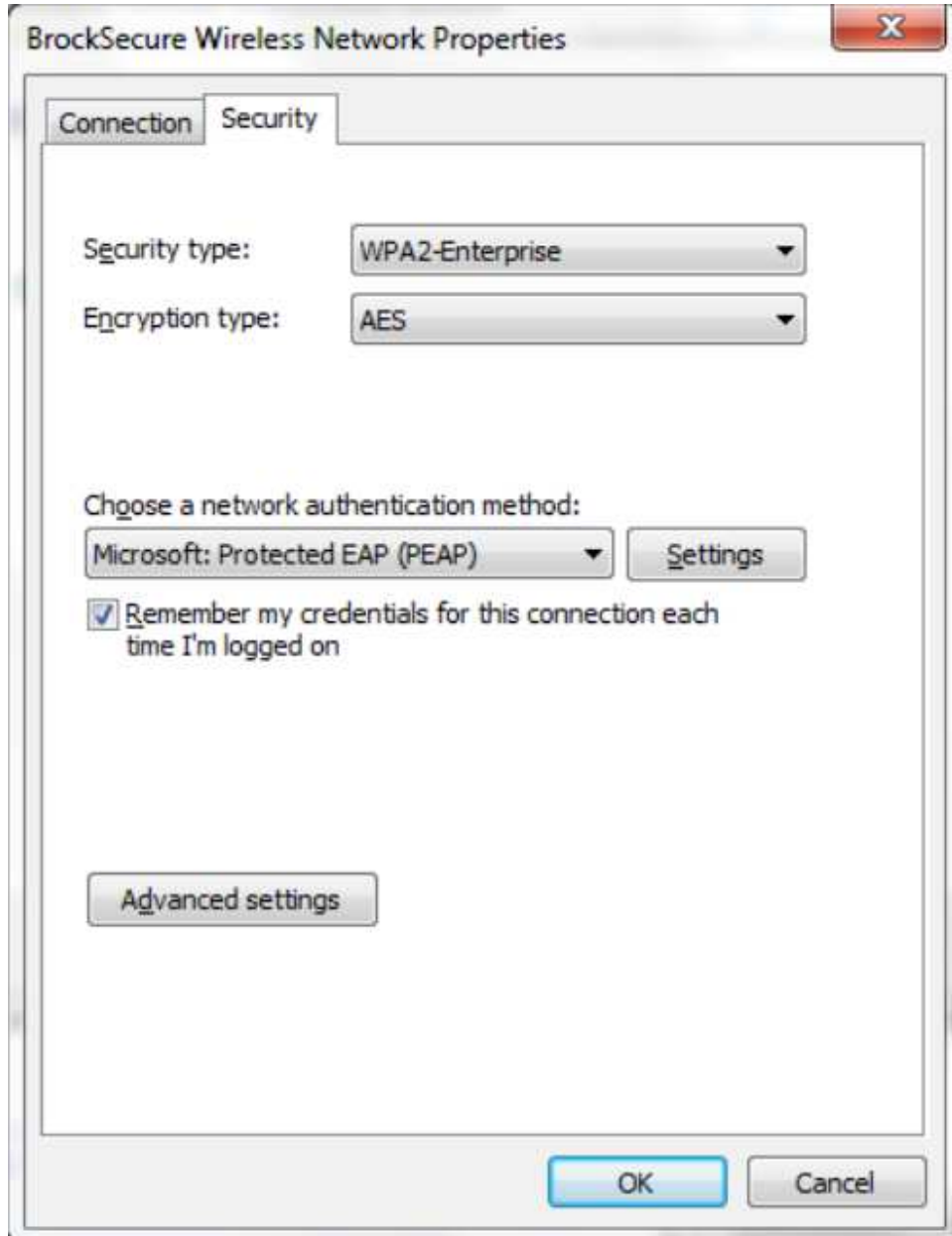


The EAP MSCHAP v2 Properties box pops up. Make sure to uncheck Automatically use my Windows logon name and password (and domain if any).

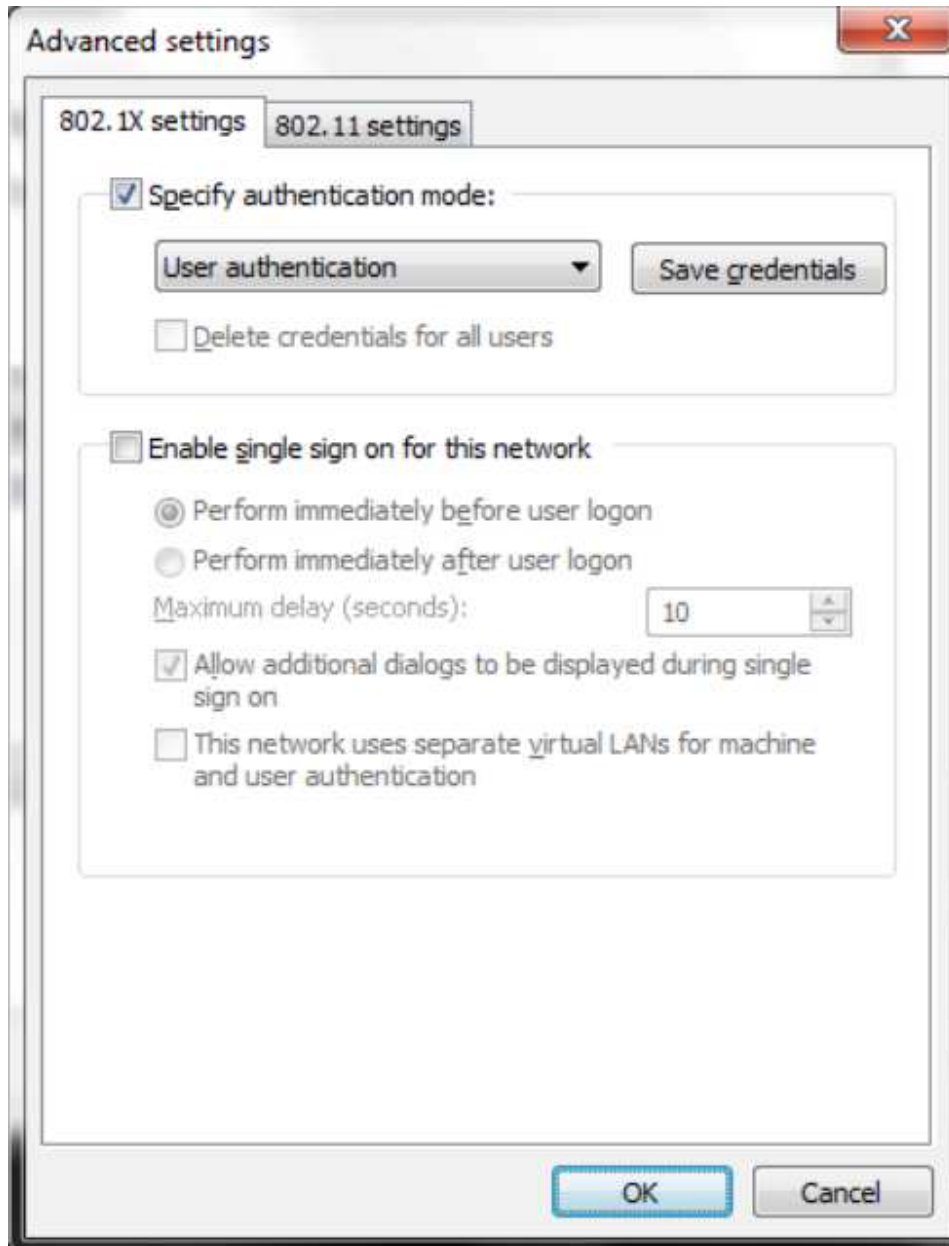
Click on *OK*.



Back on the BrockWiFi Wireless Network Properties Window click on *Advanced settings*,



Check to the box “Specify authentication mode” and select “User Authentication” from the enabled drop down menu.



Click *OK* to exit all settings windows.

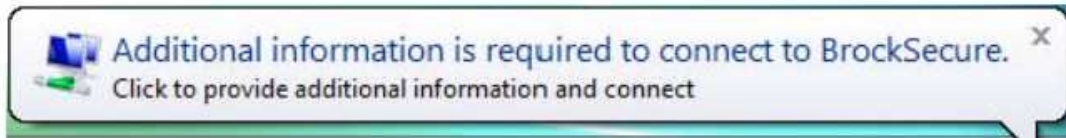


## Connecting to BrockWiFi on Windows 7

Date: August 4, 2015

Login to the BrockWiFi Wireless Network

After a couple of seconds up to a minute, in the system tray (at the bottom right corner of the screen), you will see the following:



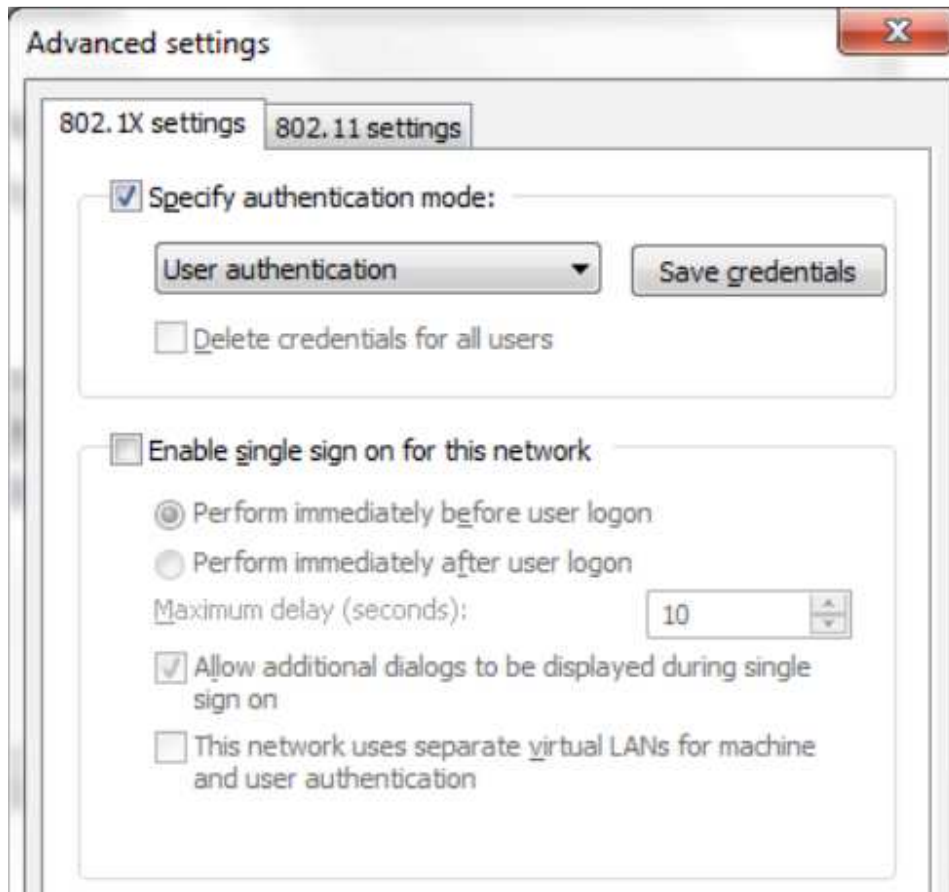
Click on the Information box and the Enter Credentials login box pops up. In the Login box, type in your portal login name and password.

Click *OK* to connect to the network.



## Additional Information

It is possible to allow Windows 7 to log onto the BrockWiFi wireless network without requiring you to type your login and password every time you restart your system. This can be done by clicking on “save credentials” within the “Advanced Settings” Window.



NOTE: Since your login information is being stored on the local drive, your friends will be able to log onto the wireless network as you if you loan them your laptop. You will also need to change your password if the laptop has been stolen or lost to ensure security access on your account to the secure wireless network.

If you have problems authenticating on the BrockWiFi Wireless Network, please contact the ITS Help Desk **905-688-5550 x4357**