



Connecting to BrockWiFi on MAC OS X 10.4 or lower

Date: August 4, 2015

Configuring BrockWiFi on Macintosh

The following instructions are for setting up BrockWiFi on a Macintosh computer. Before you continue, you will need to know what version of Mac OS you are running. To find the version you are running, follow the instructions below.

- Click on the Apple symbol in the top left corner of your screen
- Click on About This Mac
- A dialog box will appear, under the title Mac OS X there will be a version number. If the version is 10.5.x then you are running Leopard.

Setup Instructions for OS X 10.4 or lower

Click the wireless icon in the top right corner of the screen on the toolbar and select "Open Internet Connect"



Ensure you have Airport selected and in the drop down box labeled "Network" select "BrockWiFi"





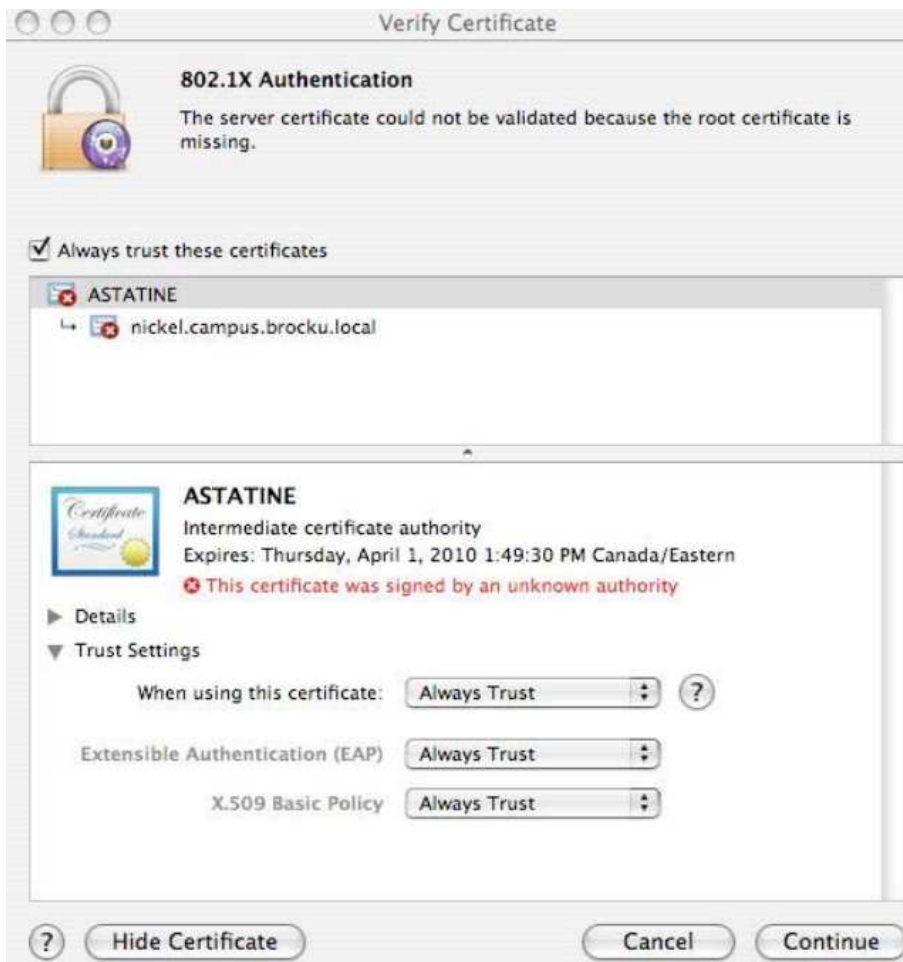
Fill in your Brock Portal username and password



Alternatively select "Other" and fill out the boxes as noted below substituting your Brock portal username and password.



You will then be prompted to verify a certificate, select "Show Certificate" Ensure you fill out the appropriate boxes and drop downs as shown below then click continue.



Wait up to two minutes for the connection to be configured and for your computer to be assigned an I.P. address.

You have successfully configured BrockWiFi.



Connecting to BrockWiFi on MAC OS X 10.4 or lower

Date: August 4, 2015

NOTE: Since your login information is being stored on the local drive, your friends will be able to log onto the wireless network as you if you loan them your laptop. You will also need to change your password if the laptop has been stolen or lost to ensure security access on your account to the secure wireless network.

If you have problems authenticating on the BrockWiFi Wireless Network, please contact the ITS Help Desk 905-688-5550 x4357