



# BACHELOR OF EARLY CHILDHOOD EDUCATION (HONOURS)

PROGRAM GUIDE  
2023-2024

# Bachelor of Early Childhood Education (Honours)

## Program Guide

### 2023-2024

## Welcome

*We wish to begin our welcome by acknowledging that the land on which Brock University is situated as the traditional territory of Anishinaabe and Haudenosaunee peoples. We also wish to recognize efforts to include Indigenous peoples, cultures, and ways of knowing into our program, courses, and communities. We are mindful that it will take great effort and intentionality to decolonize our programs and institutions, and at Brock University we hope you will join us in pursuit of the goal of an equitable and just future.*

Building on your two-year early childhood education diploma, you are taking an important step to deepening your pedagogical understanding, enabling you to better support young children's learning and development. The Brock BECE (Honours) [online program](#) is unique, designed intentionally to focus on critical perspectives and the connections amongst the practice of teaching, learning, and holistic development. Through deepening your own understanding and challenging assumptions, you will have the opportunity to enhance your capacity to create empowering, just, and ethical spaces for all early years' stakeholders, including children. Whether you have spent five, ten or thirty years in the field, or just completed your college diploma, the Brock BECE online degree will offer you the chance to take your skills and knowledge to the next level, enabling you to intentionally and systematically harness the synergies aligned within your profession and importantly, to create new knowledge about the field of early childhood education.

The Brock BECE program guide is designed to lead you through the many aspects of your online program of study. Different sections will be useful to you at different points during your studies. You are advised to consult this guide on a regular basis and you will find it very useful as you complete some of the academic tasks embed within your required courses. In addition to consulting this guide, you are required to participate in all online orientation and information sessions designed specifically for you to support the successful completion of your studies. You are also required to meet (online) with the Faculty of Education Academic Advisors during each term of your studies, so you can be informed of any program changes, professional development opportunities, and make the best course selection to meet your future goals.

Active engagement within the program, and with your peers, instructors, as well as the Brock and wider ECE community, afford rich opportunities for your professional and personal growth. We are with you each step of the way and extend our best wishes for your success.

The Brock BECE Program Committee

SURGITE!

# Contents

Welcome.....	1
Vision of the Brock BECE Program .....	3
Guiding Principles of the Brock BECE Program .....	3
Pedagogy of Relationships .....	3
Holistic Orientation .....	4
Professional Practice .....	4
Instructional Approach .....	5
Putting the Pieces Together.....	5
Program Framework .....	6
Program Information.....	8
Academic Requirements .....	8
Context Requirements.....	8
Meet Regularly with Academic Advisors .....	8
Program Planning Guide	
Minimum Academic Requirements for Continued Registration .....	8
Learning Skills Services.....	9
Financial Support.....	9
Extra Courses .....	9
Repeating a Failed Course .....	9
Repeating a Course Where a Passing Grade Has Been Awarded .....	9
Change of Major .....	10
Applicable Calendar .....	10
Enrolment Status .....	10
Brock BECE Policy Regarding Limitations on Enrolment.....	10
Application for Graduation .....	10
Graduation Standing .....	11
Final Words of Advice .....	11

*Disclaimer: Changes to the program can be made when necessary, as decided by the Brock BECE Program Committee and Department of Educational Studies. The Calendar at entry point is used to determine the program requirements, along with special consideration to modifications noted by the Office of Registrar's Records.*



## Vision of the Brock BECE Online Program

The Brock BECE online program is designed to support the ongoing professionalization, education, and advancement of early learning educators who are committed to responding to the need for a comprehensive and quality early learning and care system.

This vision, presented in Figure 1, is integrally linked to the guiding principles of the Brock BECE online program in continuing to support the education of those who focus on the healthy development, care and education of the whole child - *body, mind, heart, and spirit* through building strong, stable nurturing relations.

## Guiding Principles of the Brock BECE Program



## Pedagogy of Relationships

- *Relationships* are at the core of early learning and care environments and practices.
- Relationships are responsive, ethical, and reciprocal, fostered between people, places, and things.



- Children’s learning and development are optimized when embedded in *meaningful, equitable, socially-just learning contexts and communities* and where there are opportunities to form nurturing, responsive relationships with all others (i.e., ethical spaces of encounters)
- *Listening* is prioritized as a means of validating the child’s right to participate and inform decisions regarding their learning opportunities and environments.

*Listening means giving value to others, being open to them and what they have to say. Listening legitimizes the other person’s point of view, thereby enriching both listener and speaker.*

~Carla Rinaldi

## Holistic Orientation

- The Brock BECE program is built upon *seeing the child and community (world) as one*, that is children are understood as being part of a whole community that includes their family, community, culture and their natural environment.
- Children are empowered to learn and grow
- Children are complete agentic beings, deserving respect of their current capacities and vulnerabilities, as well as being viewed as competent and capable of contributing to the world.

## Professional Practice

- The intuitive and intentional educator is thoughtful and purposeful in creating *conditions for the complexities, mutual encounters, tensions, and transformations* that support and ignite *learning and play*.
- The theoretical practitioner is engaged in continuous critical reflection on both knowledge and the application of research informed practices to provide learning environments that are meaningful, sequenced, and responsive, engaging, balanced, and culturally/contextually relevant.
- Pedagogical practice in the field of education and the ethics of care are informed and transformed by research.
- The professional practitioner is a transformational agent of change, reflective, self-critical, an advocate, and a leader in the field.

# Instructional Approach

Instructors delivering the courses restricted to the Brock BECE students are committed to the belief that:

- ✓ During the early years, children develop a foundation upon which subsequent advances in all domains are laid. These early years are crucial to a child’s healthy, strong, and stable foundation.
- ✓ Disparities in what children know, do, and understand are evident before they enter the formal school setting and are strongly associated with the context in which they live and develop. Participation in high-quality early childhood education programs can mediate these disparities.
- ✓ Educators need to value equity, diversity, social justice, and support children’s varied ways of knowing, doing, and being.
- ✓ Early childhood education programs that include research-informed practices have been shown to result in positive educational, social, and economic outcomes for children, their families, communities and the greater society.
- ✓ Holistic early childhood education programs reflect the recognition that:
  - Children learn through play and social interactions.
  - Children construct their knowledge through active engagement with people, materials and spaces.
  - Child development and learning are characterized by individual variation.
  - Family and community partnerships positively impact both child and program outcomes.
- ✓ Comprehensive early childhood education programs support lifelong *learning dispositions*:
  - Courage, curiosity, & imagination
  - Trust & playfulness
  - Persistence, perseverance, & resilience
  - Confidence & creativity
  - Communication skills

*“Pedagogy must be explicit and constantly organised to create conditions for the generative tensions of transformative and mutual relations... Pedagogy demands that early childhood education become ever more attuned to the situated complexities in which we live.”*

Cristina D. Vintimilla & Veronica Pacini-Ketchabaw (2020) Weaving pedagogy in early childhood education: on openings and their foreclosure, *European Early Childhood Education Research Journal*, 28:5, 628-641

## Putting the Pieces Together

To understand how the Brock BECE online program is conceptualized see Figure 1. Figure 2 presents the primary focus of each required course in relation to the program’s integrated, dynamic and holistic nature and pedagogy. A tracking form is also provided to help ensure you fulfill the degree requirements. Please consult the Brock Calendar at entry point for official program requirements.

# Program Framework

Ethical Standards [ES] and Standards of Practice [SP] for the teaching profession are explicitly and intentionally integrated into the Brock BECE framework.

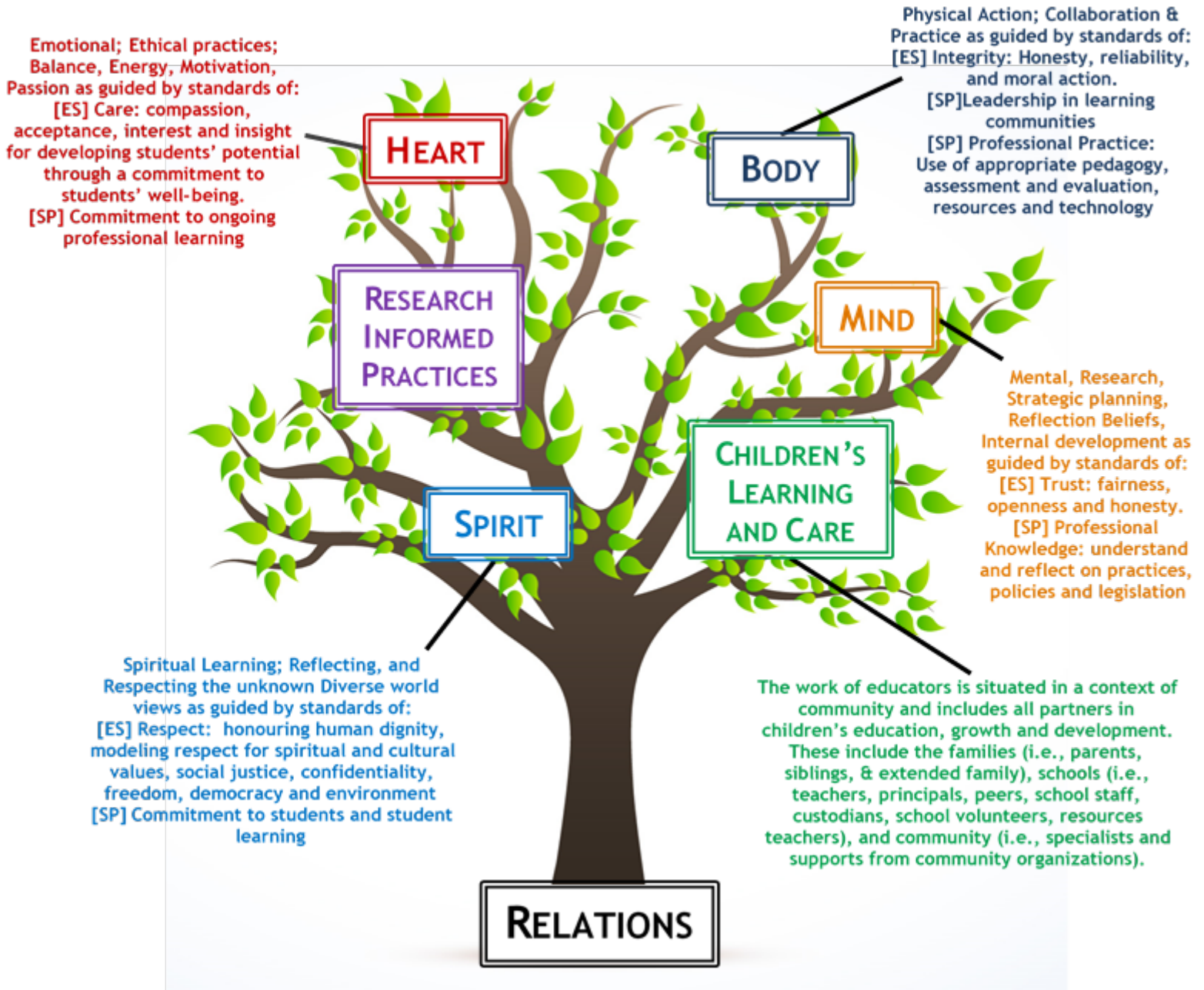


Figure 1: Brock BECE Program Framework. Graphic design by Freepik.



**RESEARCH INFORMED PRACTICES**

ECEC 4D51: ECE Honours Project

ECEC 4P81: Research Methods in Early Childhood Education

**HEART**

Emotional; Ethical practices; Balance, Energy, Motivation, Passion

ECEC 3P51: Early Childhood Education for Sustainability

**MIND**

Mental Research, Strategic Planning, Reflection, Internal Development, Beliefs

ECEC 3P54: Evaluating the Science behind the Developing Child

ECEC 4P14: Mathematics in the Early Years

ECEC 4P24: Literacy in the Early Years

**RELATIONS**

ECEC 3P50: Early Childhood Education

ECEC 3P53: Ethics, Policy and Care in ECE

**BODY**

Body, Physical Action, Collaboration & Practice

ECEC 3P85: Internship I

ECEC 4P85: Internship II

**SPIRIT**

Spiritual Learning, Reflecting, Respecting the Unknown, Diverse World Views

ECEC 4P35: Global Education: A Cross Curricular Approach

ECEC 4P52: Inclusive Programming in ECE

**CHILDREN'S LEARNING AND CARE**

ECEC/INDG 2F95: Indigenous Culture and Early Childhood Education

ECEC 3P55: Young children with exceptionalities

*Figure 2. The primary focus of each course in relation to the program philosophy*

# Program Information

## Academic Requirements

Brock BECE students typically receive 7 transfer credits for the completion of their 2-year ECE diploma.

This leaves 13 credits to complete consisting of 8.5 required and specified course credits, and 4.5 non-major credits including two context courses and electives.

# 20

credits required for the  
Brock BECE honours degree

If you received more than 7.0 transfer credits (maximum is 10), then you may be able to use them towards satisfying context and/or elective credits. Please meet with an Academic Advisor to see if/how these additional transfer credits may fit into your Program.

## Context Requirements

Among the first ten credits successfully completed, all Brock students must have taken all three of the required context courses.

All Brock BECE students are given a SOCIAL SCIENCE context credit as a transfer credit, so all Brock BECE students are required to complete **1.0 HUMANITIES** and **1.0 SCIENCE** context credit.

The Brock BECE Program Committee advises students to take the context requirements during the spring/summer after their first year in the Brock BECE program. In 20 credit degree programs a maximum of eight credits may be numbered 1(alpha)00 to 1(alpha)99, including transfer credits.

## Meet Regularly with Academic Advisors

BECE students are also advised to consult with the Faculty of Education Academic Advisors. They can assist you with your selection of context and elective courses to meet your academic requirements.

To book an appointment or use the live chat function, please visit

<https://brocku.ca/education/student-resources/foe-academic-advising-resources/>

For more in depth questions please email [foeadvising@brocku.ca](mailto:foeadvising@brocku.ca).

### Program Plans

To assist you with understanding the requirements for the BECE program please see the following link for samples of the BECE Program Plan. BECE courses are sequentially planned and taking courses out of the recommended sequence may impact success. Please keep in mind these are generalized plans and individualized plans are given to student when they have an Academic Advising appointment. <https://brocku.ca/education/student-resources/registering-for-next-term/>

## Minimum Academic Requirements for Continued Registration

For consideration to proceed to year 4 of an honours degree, a student must have obtained a minimum 70 percent *major average* and a minimum 60 percent in the remaining credits (including transfer credits).

## Transfer Success & Learning Skills Services

Successfully transferring to University can be easier when you engage with some of the supports available at Brock University designed for you - see <https://discover.brocku.ca/next-steps/transfer-students/>

Academic-Zone Learning Services is one of seven services provided through the [Student Development Centre](#) to help students enhance their academic, personal, social and spiritual life at Brock. What they can do for you: A-Z Learning Services provides free academic support for all Brock students to help them achieve their full potential in university and beyond.

## Financial Support

Students enrolled in the Brock BECE program may apply for OSAP. Students may also visit the Student Awards and Financial Aid (SAFA) website at Brock - <http://brocku.ca/safa> The SAFA website also has a link for student jobs on and off campus.

## Extra Courses

Students wishing to augment the Brock BECE degree program by taking extra courses because of personal interest may enroll in such courses where they have met the prerequisite and designate them as extra courses not to be used for credit towards that degree. Students must declare a course to be extra prior to the last day for official withdrawal.

Please note: Taking additional credits may extend the duration of your studies at Brock.

## General Information & Supports

Visit the [BECE Student Resources Website](#) for program specific and general information such as; accessing Brock wellness and learning resources, ordering documents and records, professional events and part time work, and much more.

## Repeating a Failed Course

A student may repeat a failed course, but no course may be repeated more than once. Both grades for a repeated course will remain on the student's transcript but the second grade will be used in the computation of the student's average.

## Repeating a Course Where a Passing Grade Has Been Awarded

Students may repeat a course in which they have received a passing grade with the approval of the Office of the Registrar. The grade awarded for a repeated course will supersede the grade from the first attempt at the course regardless of whether it is higher or lower. Both grades will remain on the student's transcript but the second grade, whether higher or lower, will be used in the computation of the student's average. A student will be permitted to repeat passed courses constituting no more than three credits, but no course may be repeated more than once.

First year courses (numbered 1(alpha)00 to 1(alpha)99) and courses listed as prerequisites may not be repeated if credit has been received for higher level courses in the same subject.



## Change of Major

Brock BECE students, who subsequently elect to change their major, may have the applicability of the transfer credits re-evaluated. Please consult with Brock BECE program consultant prior to applying for a change of major. Students changing degree programs may declare non-applicable passed courses as extra to their degree at the time of the program change. Students may change the designation of passed major courses as extra to their program only with the permission of the Chair/Director.

## Applicable Calendar

A student who has maintained enrolment in at least one credit in each calendar year (May to April) may complete the degree program using the "Academic Regulations" section of the Calendar operative in the year in which that program was entered. <https://brocku.ca/webcal/>

### Enrolment Status

#### FULL-TIME:

- A student enrolled in three or more credits over the Fall/Winter Session.
- A student enrolled in three credits over the Spring and Summer Sessions.

#### PART-TIME:

- A student enrolled in less than three credits over the Fall/Winter Session.
- A student enrolled in less than three credits over the Spring and Summer Sessions.

## Brock BECE Policy Regarding Limitations on Enrolment

If you try to register for more than the typical credit load for a given term, the Brock Registration System will not allow it. To increase the limitation of a credit load for a given term, students must have achieved a minimum of 75% average while taking a full course load during the fall/winter term. IF you meet this minimum requirement, and wish to increase the course load limit for the spring/summer term, you then need to contact the advising office for guidance: [foeadvising@brocku.ca](mailto:foeadvising@brocku.ca) Please note that the BECE Program Director will review the request, verify your minimum average prior to considering the override. When the request is processed, you will receive an email with the outcome of the review.

## Application for Graduation

Application for graduation at Spring Convocation must be received in the Office of the Registrar by *February 1 with the required fee*. Application for graduation at the Fall Convocation must be received in the Office of the Registrar by *July 1 with the required fee*.

<https://brocku.ca/registrar/toolkit/forms/#graduation>

## Graduation Standing

First-class Honours degrees are granted to students who have completed a 20 credit honours program with first-class honours standing, which *require a minimum 80 percent average in all major credits and 70 percent in the remaining credits*. A transfer student must have completed a minimum of five credits at Brock, including all departmental honours requirements for year 4 and have maintained a minimum 75 percent overall average and a minimum 80 percent major average (based on Brock courses only). Second-class Honours degrees are granted to students who have completed a 20 credit honours program with second-class honours standing, which require *a minimum 70 percent average in all major credits and 60 percent in the remaining credits*. A transfer student must have completed a minimum of five credits at Brock, including all departmental honours requirements for year 4 and have maintained a minimum 65 percent overall average and a minimum 70 percent major average (based on Brock courses only).

Success in the program will be enhanced by meeting with those who support the Brock BECE program, such as:

- Academic Advisors: To book an appointment visit <https://brocku.ca/education/student-resources/foe-academic-advising-resources/> or for short questions please email [foeadvising@brocku.ca](mailto:foeadvising@brocku.ca).
- The Student Resources website: For resources and information please visit the [BECE Student Resources website](#)

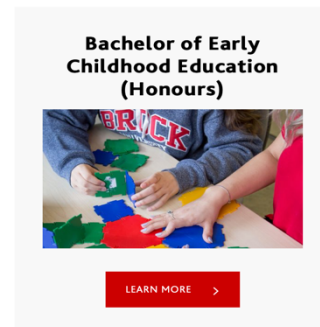
## Final Words of Advice

It is your responsibility to meet with your FOE Academic Advisor each term or more often as needed.

It is your responsibility to make certain you complete the required and elective credits for the BECE degree program as outlined in this program guide.

If you have any questions or wish to check on the appropriateness of the course you are considering for an elective, you are encouraged to connect with a Faculty of Education Program Advisor *prior* to registration in the course.

If you are planning to apply to a **teacher education program** after you complete the BECE program, you will need to connect with each university as well as the Education Application Service (TEAS) website <https://www.ouac.on.ca/teas/> to learn about application requirements, process and timelines. You can find the information for **Brock's Consecutive Teacher Education Program** by making an appointment with FOE Advising and exploring this website: <https://brocku.ca/admissions/teacher-education/>



If you wish to succeed in BECE, seek out resources at Brock University for support. We're here for you!



Connect & Check Out Our BECE Updates Through Social Media

