

Winter Injury Studies 2009/10

Grape Bud Survival

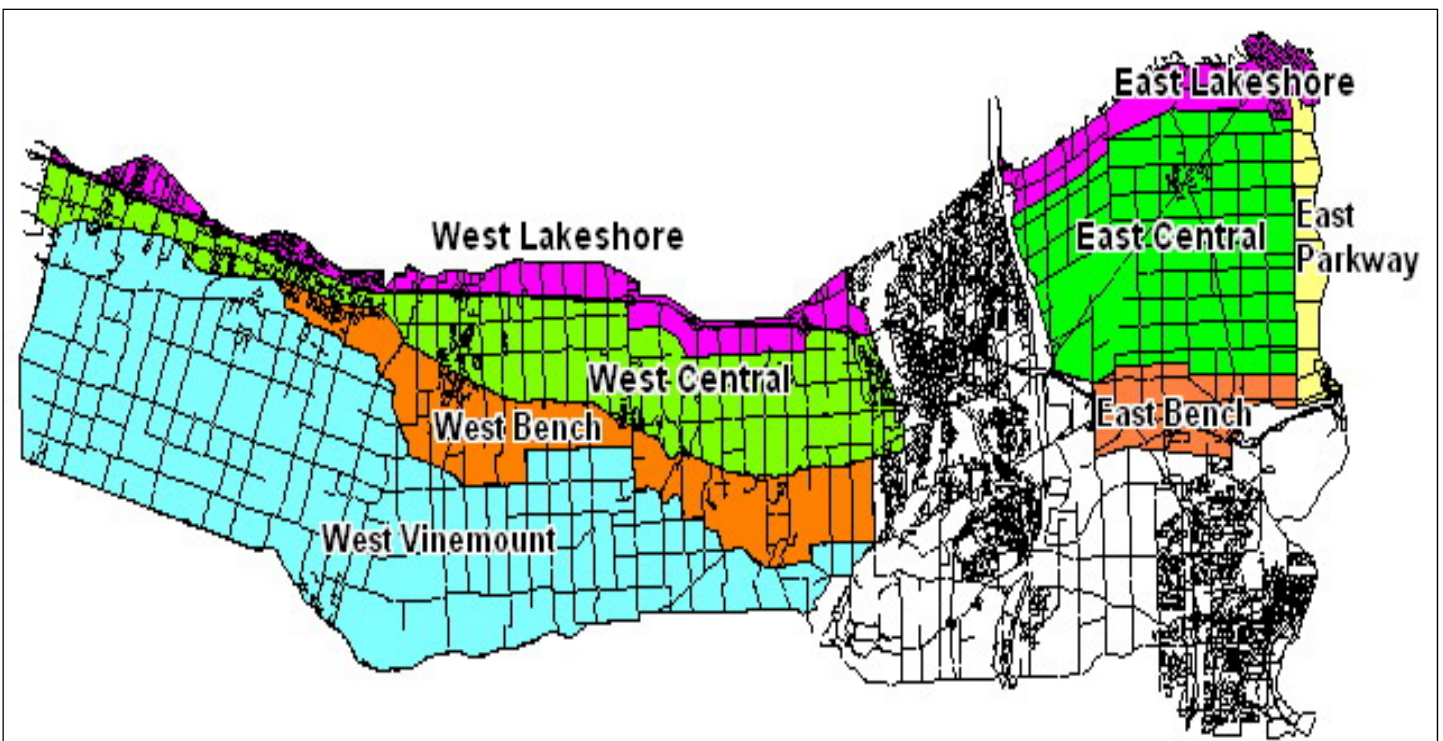
February 15, 2010 (West)

February 22, 2010 (East)



Grape bud sampling to establish winter survival is part of a – Ontario Grape & Wine Research Incorporated funded Winter Injury project. The tables in this article, report the sampling results based on the bud collection in the west end regions during the week of February 15th, 2010 and in the east end regions during the week of February 22nd, 2010. However, the percent alive may vary up or down from the last sample due to the variation in the samples taken. The tables below are based on multiple samples and multiple sites within in area for each cultivar.

The Parkway zone runs approximately 1 km along the west side of the Niagara River from Niagara-on-the-Lake to Queenston; the Lakeshore zone is approximately 1 km south of the lake from the Niagara River to Grimsby; the Central zone continues south of the Lakeshore zone to the base of the escarpment; the Bench zone starts at the south side of the Central zone to the brink of the escarpment and the Vinemount zone runs south of the Bench Zone.



8 Sampling Zones Used

% Live Buds - Vinifera – Feb 15, 2010 & Feb 22, 2010 (NS means no sample taken)

Cultivar	Location	West of Canal (Week of Feb 15/10)	East of Canal (Week of Feb 22/10)
Cabernet Franc	Bench	75-88	79-94
	Central	69-89	79-82
	Lakeshore	82-87	78-90
	Parkway	NS	77-84
	Vinemount	82-91	NS
Cabernet Sauvignon	Bench	84-85	82-90
	Central	80-82	79-80
	Lakeshore	81-87	80-82
	Parkway	NS	81
	Vinemount	81-92	NS
Chardonnay	Bench	82	87-89
	Central	83-91	81-93
	Lakeshore	80-84	96
	Parkway	NS	84-89
	Vinemount	90-96	NS
Merlot	Bench	84-86	78-83
	Central	77-84	79
	Lakeshore	83-89	73-76
	Parkway	NS	78-80
	Vinemount	78-91	NS
Pinot Noir	Bench	78-84	82-92
	Central	81-94	78-94
	Lakeshore	75	85
	Parkway	NS	85-86
	Vinemount	72-85	NS
Riesling	Bench	85-88	77-80
	Central	81-88	76-84
	Lakeshore	81-90	65
	Parkway	NS	79-85
	Vinemount	78-85	NS
Sauvignon Blanc	Bench	77-80	86
	Central	73-75	78-85
	Lakeshore	79-82	67-75
	Parkway	NS	68-70
	Vinemount	72-87	NS
Syrah	Bench	65-75	78
	Central	60	NS
	Lakeshore	66	70
	Parkway	NS	57-71

% Live Buds - Hybrids – Feb 15, 2010 & Feb 22, 2010 (NS means no sample taken)

Cultivar	Location	West of Canal (Week of Feb 15/10)	East of Canal (Week of Feb 22/10)
Baco Noir / Foch	Bench	85-91	NS
	Central	82	91-94
	Parkway	NS	89-92
	Vinemount	84-89	NS
Vidal	Central	81-96	88-91
	Lakeshore	81	85-90
	Parkway	NS	84-88
	Vinemount	95	NS