

# Winter Injury Studies 2009/10

## Grape Bud Survival

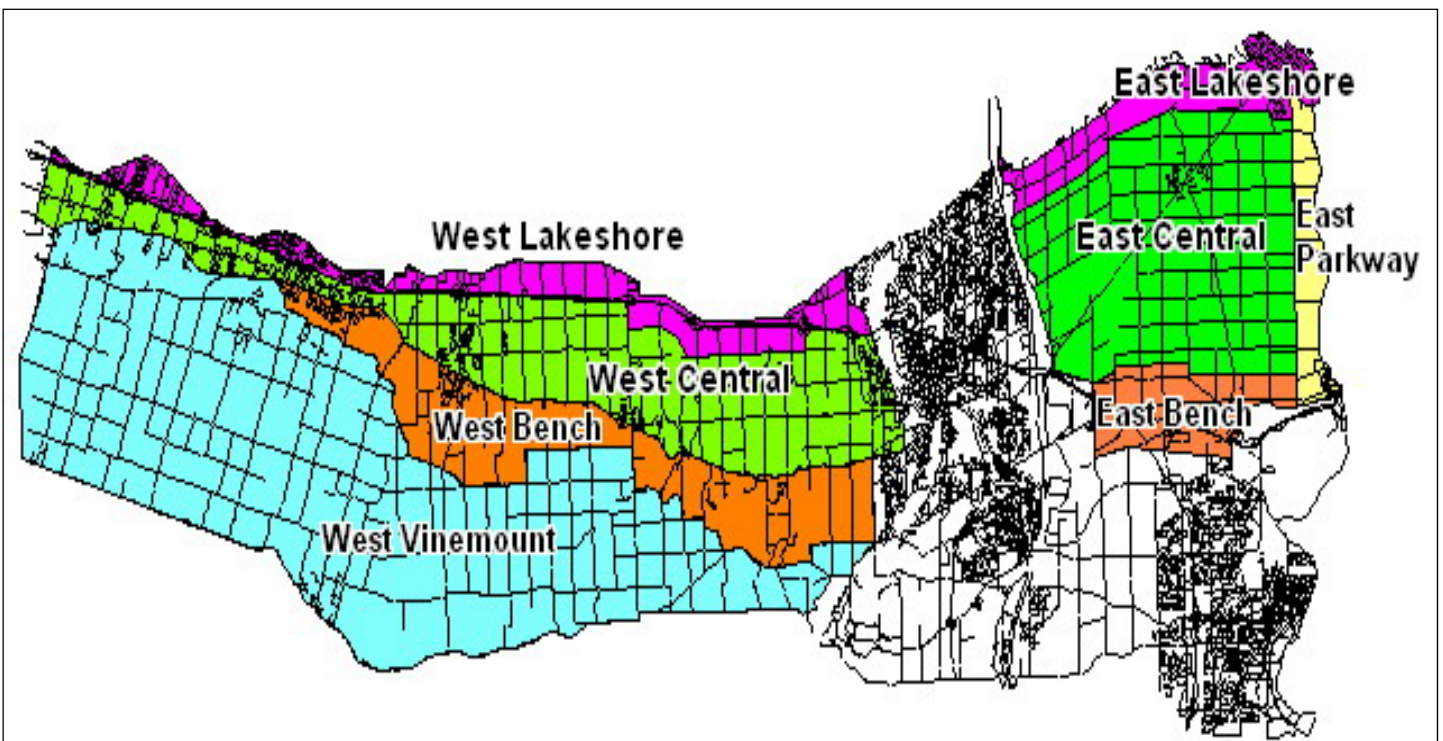
### January 18, 2010 (West)

### January 11, 2010 (East)



Grape bud sampling to establish winter survival is part of a – Ontario Grape & Wine Research Incorporated funded Winter Injury project. The tables in this article, report the sampling results based on the bud collection in the west end regions during the week of January 18<sup>th</sup>, 2010 and in the east end regions during the week of January 11<sup>th</sup>, 2010. However, the percent alive may vary up or down from the last sample due to the variation in the samples taken. The tables below are based on multiple samples and multiple sites within in area for each cultivar.

The Parkway zone runs approximately 1 km along the west side of the Niagara River from Niagara-on-the-Lake to Queenston; the Lakeshore zone is approximately 1 km south of the lake from the Niagara River to Grimsby; the Central zone continues south of the Lakeshore zone to the base of the escarpment; the Bench zone starts at the south side of the Central zone to the brink of the escarpment and the Vinemount zone runs south of the Bench Zone.



8 Sampling Zones Used

**% Live Buds - Vinifera – Jan 18, 2010 & Jan 11, 2010 (NS means no sample taken)**

<b>Cultivar</b>	<b>Location</b>	<b>West of Canal (Week of Jan 18/10)</b>	<b>East of Canal (Week of Jan 11/10)</b>
Cabernet Franc	Bench	79-88	91-92
	Central	78-89	85-88
	Lakeshore	91	90-92
	Parkway	NS	84-95
	Vinemount	79-92	NS
Cabernet Sauvignon	Bench	87-95	89-93
	Central	87-93	83-89
	Lakeshore	82-87	88-89
	Parkway	NS	81-85
	Vinemount	85-93	NS
Chardonnay	Bench	95-97	90-91
	Central	81-96	85-87
	Lakeshore	85-92	88-89
	Parkway	NS	83-91
	Vinemount	91-92	NS
Merlot	Bench	84-94	91-94
	Central	82-95	75-85
	Lakeshore	91-94	84-92
	Parkway	NS	86-87
	Vinemount	80-83	NS
Pinot Noir	Bench	90-93	87-91
	Central	89-95	85-89
	Lakeshore	94	95
	Parkway	NS	91-92
	Vinemount	91-92	NS
Riesling	Bench	77-92	90
	Central	84-94	80-83
	Lakeshore	89-94	77-80
	Parkway	NS	77-80
	Vinemount	77-91	NS
Sauvignon Blanc	Bench	82-93	86
	Central	74-91	81-85
	Lakeshore	91	86-87
	Parkway	NS	84-87
	Vinemount	93	NS
Syrah	Bench	75-78	65
	Central	70-86	NS
	Lakeshore	71	71
	Parkway	NS	72-77

**% Live Buds - Hybrids – Jan 18, 2010 & Jan 11, 2010 (NS means no sample taken)**

<b>Cultivar</b>	<b>Location</b>	<b>West of Canal (Week of Jan 18/10)</b>	<b>East of Canal (Week of Jan 11/10)</b>
Baco Noir / Foch	Bench	95-97	NS
	Central	85-91	93-95
	Parkway	NS	94
	Vinemount	84-88	NS
Vidal	Central	90-91	84-95
	Lakeshore	96	92-95
	Parkway	NS	93-95
	Vinemount	84-88	NS