

Winter Injury Studies 2009/10

Grape Bud Survival

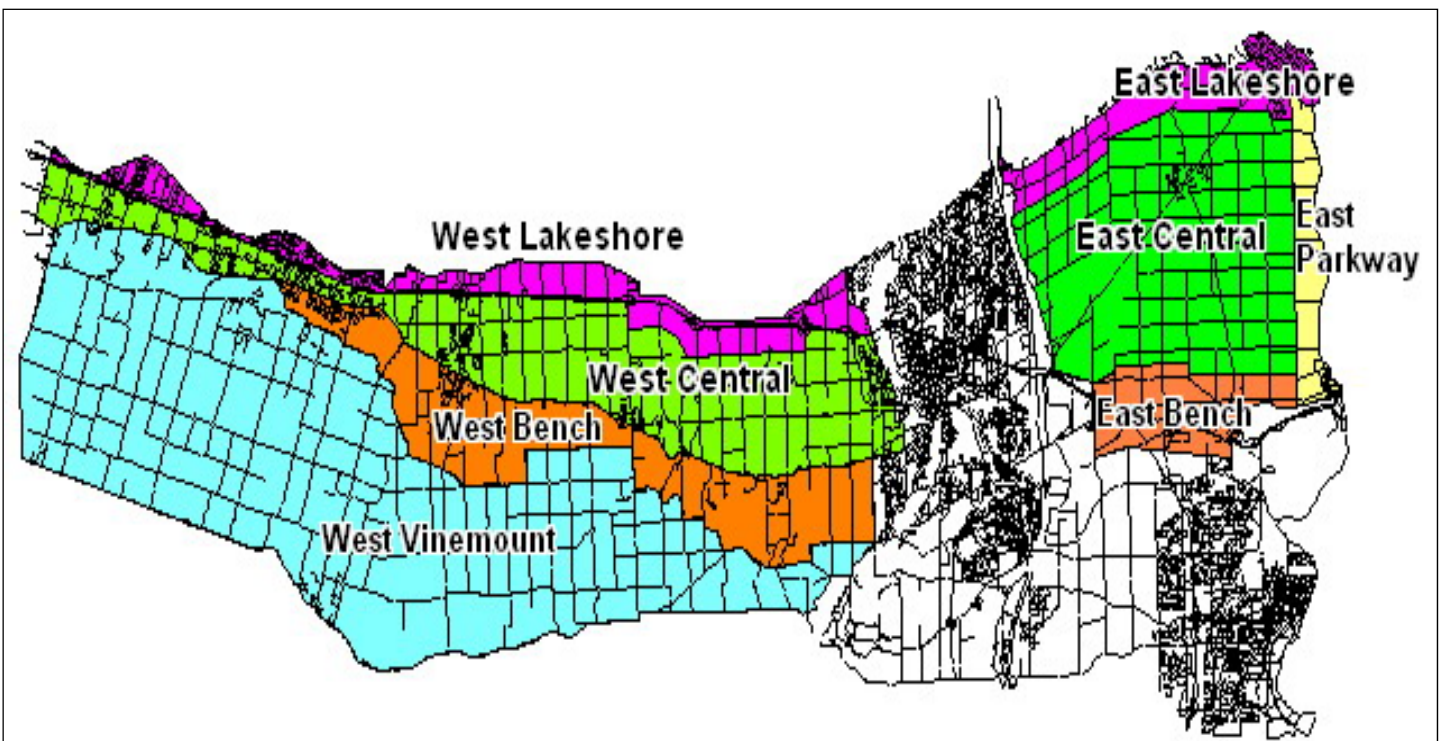
January 4, 2010 (West)

January 11, 2010 (East)



Grape bud sampling to establish winter survival is part of a – Ontario Grape & Wine Research Incorporated funded Winter Injury project. The tables in this article, report the sampling results based on the bud collection in the west end regions during the week of January 4th, 2010 and in the east end regions during the week of January 11th, 2010. However, the percent alive may vary up or down from the last sample due to the variation in the samples taken. The tables below are based on multiple samples and multiple sites within in area for each cultivar.

The Parkway zone runs approximately 1 km along the west side of the Niagara River from Niagara-on-the-Lake to Queenston; the Lakeshore zone is approximately 1 km south of the lake from the Niagara River to Grimsby; the Central zone continues south of the Lakeshore zone to the base of the escarpment; the Bench zone starts at the south side of the Central zone to the brink of the escarpment and the Vinemount zone runs south of the Bench Zone.



8 Sampling Zones Used

% Live Buds - Vinifera – Jan 4, 2010 & Jan 11, 2010 (NS means no sample taken)

Cultivar	Location	West of Canal (Week of Jan 4/10)	East of Canal (Week of Jan 11/10)
Cabernet Franc	Bench	75-90	91-92
	Central	70-85	85-88
	Lakeshore	92	90-92
	Parkway	NS	84-95
	Vinemount	65-73	NS
Cabernet Sauvignon	Bench	90-92	89-93
	Central	69-93	83-89
	Lakeshore	92-94	88-89
	Parkway	NS	81-85
	Vinemount	84-89	NS
Chardonnay	Bench	89-92	90-91
	Central	82-88	85-87
	Lakeshore	89-92	88-89
	Parkway	NS	83-91
	Vinemount	78-84	NS
Merlot	Bench	90-91	91-94
	Central	87-94	75-85
	Lakeshore	86-91	84-92
	Parkway	NS	86-87
	Vinemount	87	NS
Pinot Noir	Bench	89-92	87-91
	Central	78-95	85-89
	Lakeshore	93	95
	Parkway	NS	91-92
	Vinemount	94-95	NS
Riesling	Bench	68-73	90
	Central	80-94	80-83
	Lakeshore	78-84	77-80
	Parkway	NS	77-80
	Vinemount	89-93	NS
Sauvignon Blanc	Bench	65-82	86
	Central	57-81	81-85
	Lakeshore	84	86-87
	Parkway	NS	84-87
	Vinemount	78	NS
Syrah	Bench	64-74	65
	Central	60-75	NS
	Lakeshore	76	71
	Parkway	NS	72-77

% Live Buds - Hybrids – Jan 4, 2010 & Dec 14, 2009 (NS means no sample taken)

Cultivar	Location	West of Canal (Week of Jan 4/10)	East of Canal (Week of Jan 11/10)
Baco Noir / Foch	Bench	97-98	NS
	Central	92-95	93-95
	Parkway	NS	94
	Vinemount	90	NS
Vidal	Central	89-92	84-95
	Lakeshore	91	92-95
	Parkway	NS	93-95
	Vinemount	91-92	NS