

Winter Injury Studies 2008/09

Grape Bud Survival

January 12, 2009

Research Team

Ken Slingerland and **Hugh Fraser**, OMAFRA

Kevin Ker, PhD (cand), CCOVI Brock University & KCMS

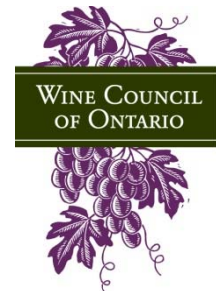
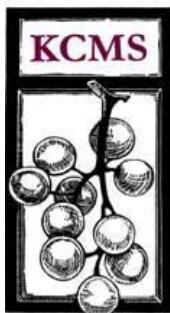
Dr. Helen Fisher, University of Guelph

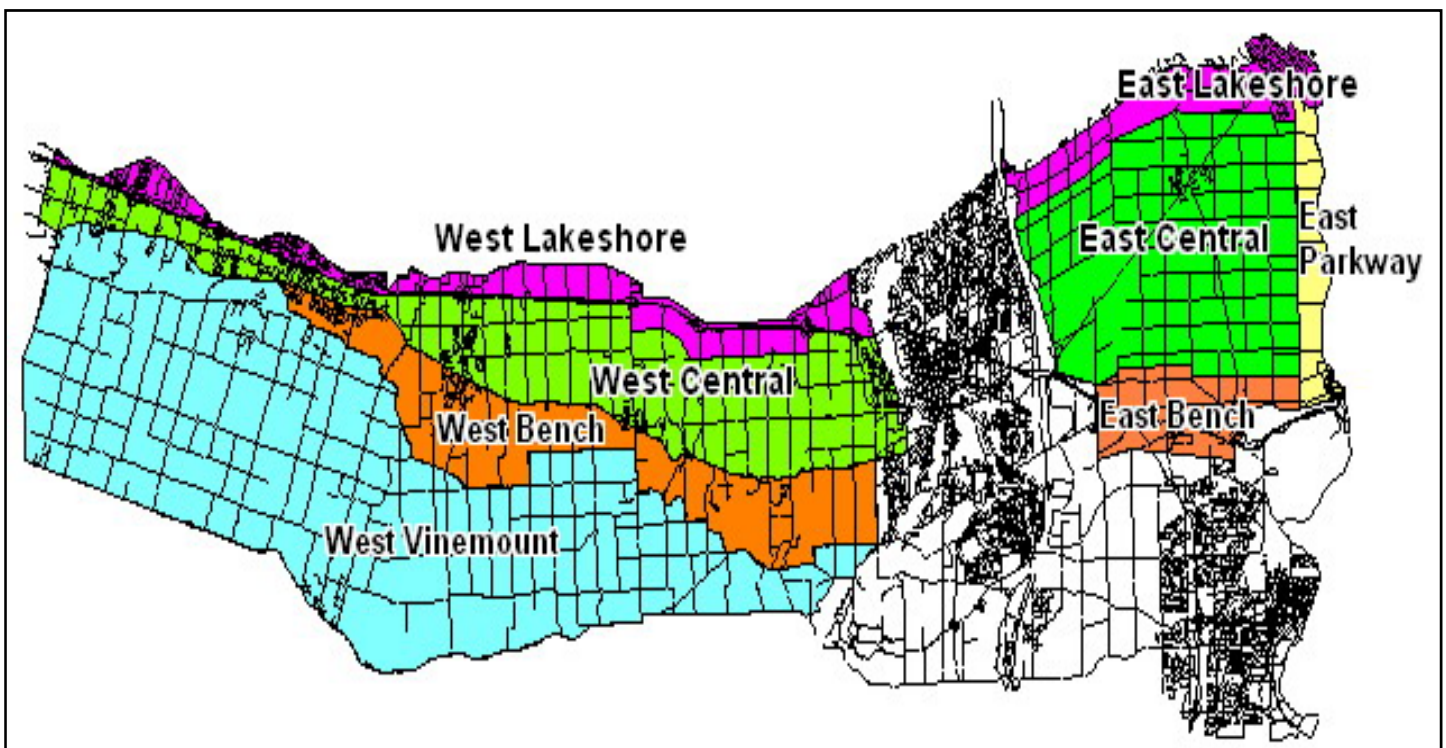
Ryan Brewster, KCMS Applied Research and Consulting Inc.

Grape bud sampling to establish winter survival is part of the - CanAdvance and CRESTech funded Winter Injury and Wind Machine project. The tables in this article, report the sampling results based on the bud collection during the week of January 12th, 2009. However, the percent alive may vary up or down from the last sample due to the variation in the samples taken. The tables below are based on multiple samples and multiple sites within in area for each cultivar.

The Grape Growers of Ontario (GGO) and the Wine Council of Ontario (WCO) are the major sponsors of the project. Other partners include; Stephane Bosc – Orchard Rite; Roger Vail – Chinook; KCMS Applied Research and Consulting; Agricorp; Ontario Tender Fruit Producers' Marketing Board; the Niagara Peninsula Fruit & Vegetable Growers' Association, OMAFRA; Brock University and the University of Guelph.

The Parkway zone runs approximately 1 km along the west side of the Niagara River from Niagara-on-the-Lake to Queenston; the Lakeshore zone is approximately 1 km south of the lake from the Niagara River to Grimsby; the Central zone continues south of the Lakeshore zone to the base of the escarpment; the Bench zone starts at the south side of the Central zone to the brink of the escarpment and the Vinemount zone runs south of the Bench Zone.





8 Sampling Zones Used

% Live Buds - Labrusca – January 12, 2009 (NS means no sample taken)

Cultivar	Location	East of Canal	West of Canal
Concord	Vinemount	NS	99
Niagara	Vinemount	NS	89-99

% Live Buds - Hybrids – January 12, 2009 (NS means no sample taken)

Cultivar	Location	East of Canal	West of Canal
Baco Noir	Central	97	97
	Parkway	95	NS
	Vinemount	NS	
Foch	Central	NS	91-97
	Vinemount	NS	88
Vidal	Central	97-99	91-93
	Lakeshore	95	NS
	Parkway	97-99	NS
	Vinemount	NS	82-97

% Live Buds - Vinifera – January 12, 2009 (NS means no sample taken)

Cultivar	Location	East of Canal	West of Canal
Cabernet Franc	Bench	89-94	80-91
	Central	91-93	82-98
	Lakeshore	82-91	97
	Parkway	84-97	NS
	Vinemount	NS	73-88
Cabernet Sauvignon	Central	NS	85
	Lakeshore	NS	90
	Parkway	97	NS
Chardonnay	Bench	92-97	88-99
	Central	89-97	97-99
	Lakeshore	88-93	NS
	Parkway	89-99	NS
	Vinemount	NS	99
Gamay	Parkway	98	NS
Merlot	Bench	91-93	95-98
	Central	99	90-100
	Lakeshore	96	96-97
	Parkway	93-98	NS
	Vinemount	NS	87
Pinot Noir	Bench	94-99	94-97
	Central	92	83-95
	Lakeshore	93	91
	Parkway	98	NS
	Vinemount	NS	95-97
Riesling	Bench	95	81-94
	Central	95-96	91-97
	Lakeshore	87-89	98
	Parkway	96-99	NS
	Vinemount	NS	72-87
Sauvignon Blanc	Central	87	92
	Lakeshore	94	NS
Syrah	Lakeshore	NS	95
	Parkway	83	NS