

Winter Injury Studies 2008/09

Grape Bud Survival

April 13, 2009

Research Team

Ken Slingerland and **Hugh Fraser**, OMAFRA

Kevin Ker, PhD (cand), CCOVI Brock University & KCMS

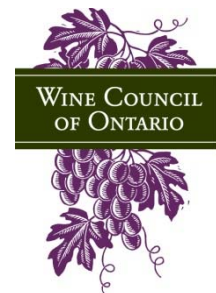
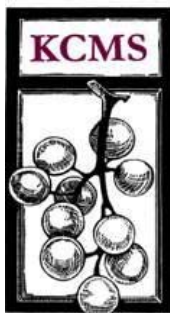
Dr. Helen Fisher, University of Guelph

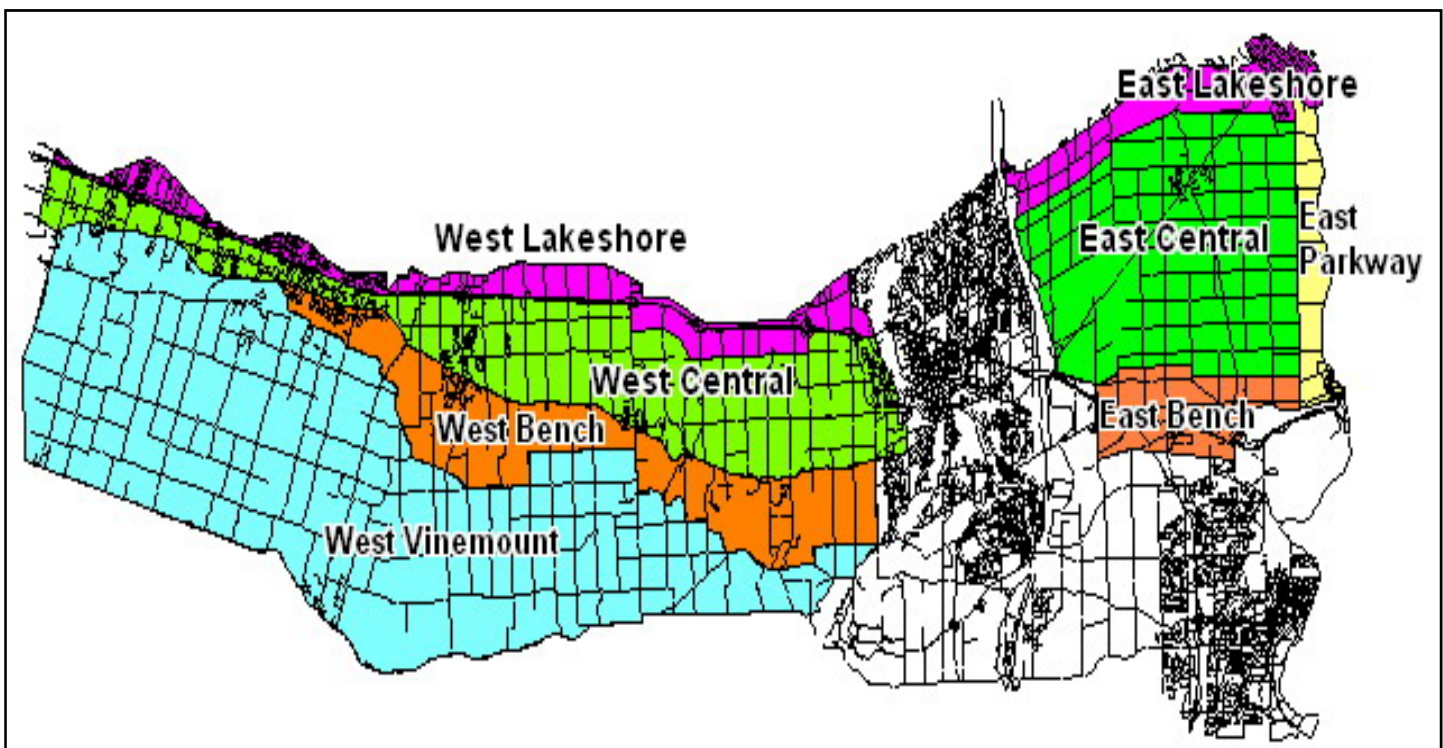
Ryan Brewster, KCMS Applied Research and Consulting Inc.

Grape bud sampling to establish winter survival is part of the - CanAdvance and CRESTech funded Winter Injury and Wind Machine project. The tables in this article, report the sampling results based on the bud collection during the week of April 13th, 2009. However, the percent alive may vary up or down from the last sample due to the variation in the samples taken. The tables below are based on multiple samples and multiple sites within in area for each cultivar.

The Grape Growers of Ontario (GGO) and the Wine Council of Ontario (WCO) are the major sponsors of the project. Other partners include; Stephane Bosc – Orchard Rite; Roger Vail – Chinook; KCMS Applied Research and Consulting; Agricorp; Ontario Tender Fruit Producers' Marketing Board; the Niagara Peninsula Fruit & Vegetable Growers' Association, OMAFRA; Brock University and the University of Guelph.

The Parkway zone runs approximately 1 km along the west side of the Niagara River from Niagara-on-the-Lake to Queenston; the Lakeshore zone is approximately 1 km south of the lake from the Niagara River to Grimsby; the Central zone continues south of the Lakeshore zone to the base of the escarpment; the Bench zone starts at the south side of the Central zone to the brink of the escarpment and the Vinemount zone runs south of the Bench Zone.





8 Sampling Zones Used

% Live Buds - Labrusca – April 13, 2009 (NS means no sample taken)

Cultivar	Location	East of Canal	West of Canal
Concord	Vinemount	NS	90
Niagara	Vinemount	NS	89

% Live Buds - Hybrids – April 13, 2009 (NS means no sample taken)

Cultivar	Location	East of Canal	West of Canal
Baco Noir	Central	93	81
	Parkway	80	NS
	Vinemount	NS	70
Foch	Central	NS	63
	Vinemount	NS	65
Vidal	Central	67-88	58-73
	Lakeshore	77	NS
	Parkway	63-74	NS
	Vinemount	NS	70-72

% Live Buds - Vinifera – April 13, 2009 (NS means no sample taken)

Cultivar	Location	East of Canal	West of Canal
Cabernet Franc	Bench	70-92	33-56
	Central	56-78	58-61
	Lakeshore	69	62
	Parkway	63-77	NS
	Vinemount	NS	46
Cabernet Sauvignon	Central	NS	87
	Lakeshore	NS	77
	Parkway	80	NS
Chardonnay	Bench	75-93	47-63
	Central	72-77	62-86
	Lakeshore	81	NS
	Parkway	89-96	NS
	Vinemount	NS	62
Merlot	Bench	72-88	35-38
	Central	65	21-68
	Lakeshore	78	56
	Parkway	66	NS
	Vinemount	NS	83
Pinot Noir	Bench	80-99	61-65
	Central	82	63-95
	Lakeshore	85	65
	Parkway	94	NS
	Vinemount	NS	62
Riesling	Bench	72-98	55-60
	Central	55-82	55-89
	Lakeshore	69-80	72
	Parkway	84-87	NS
	Vinemount	NS	82
Sauvignon Blanc	Central	75	30
	Lakeshore	80	NS
Syrah	Lakeshore	NS	43