

Winter Injury Studies 2008/09

Grape Bud Survival

March 16, 2009

Research Team

Ken Slingerland and **Hugh Fraser**, OMAFRA

Kevin Ker , PhD (*cand*), CCOVI Brock University & KCMS

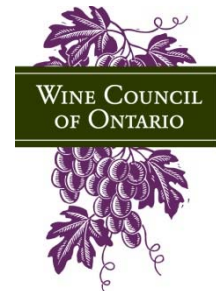
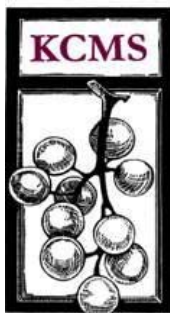
Dr. Helen Fisher, University of Guelph

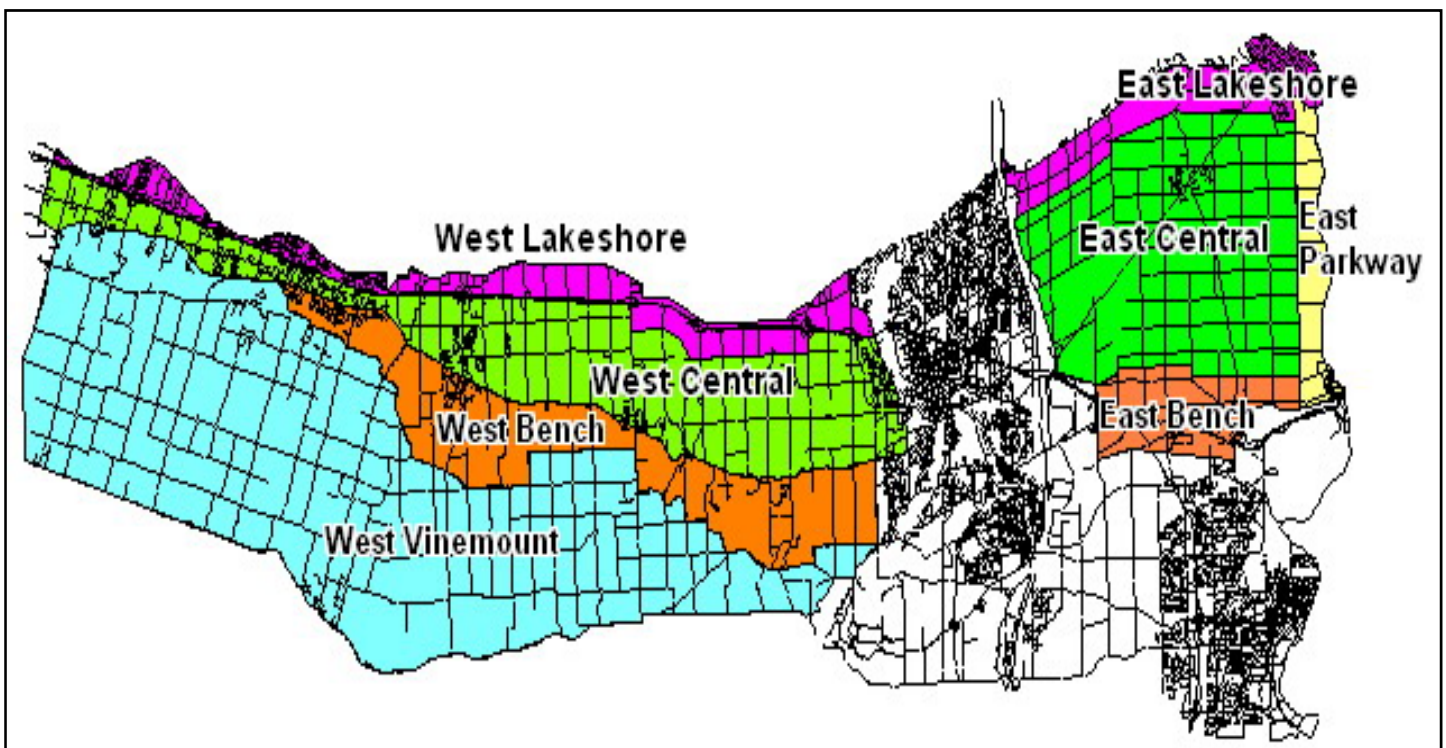
Ryan Brewster, KCMS Applied Research and Consulting Inc.

Grape bud sampling to establish winter survival is part of the - CanAdvance and CRESTech funded Winter Injury and Wind Machine project. The tables in this article, report the sampling results based on the bud collection during the week of March 16th, 2009. However, the percent alive may vary up or down from the last sample due to the variation in the samples taken. The tables below are based on multiple samples and multiple sites within in area for each cultivar.

The Grape Growers of Ontario (GGO) and the Wine Council of Ontario (WCO) are the major sponsors of the project. Other partners include; Stephane Bosc – Orchard Rite; Roger Vail – Chinook; KCMS Applied Research and Consulting; Agricorp; Ontario Tender Fruit Producers' Marketing Board; the Niagara Peninsula Fruit & Vegetable Growers' Association, OMAFRA; Brock University and the University of Guelph.

The Parkway zone runs approximately 1 km along the west side of the Niagara River from Niagara-on-the-Lake to Queenston; the Lakeshore zone is approximately 1 km south of the lake from the Niagara River to Grimsby; the Central zone continues south of the Lakeshore zone to the base of the escarpment; the Bench zone starts at the south side of the Central zone to the brink of the escarpment and the Vinemount zone runs south of the Bench Zone.





8 Sampling Zones Used

% Live Buds - Labrusca – March 16, 2009 (NS means no sample taken)

Cultivar	Location	East of Canal	West of Canal
Concord	Vinemount	NS	88
Niagara	Vinemount	NS	91

% Live Buds - Hybrids – March 16, 2009 (NS means no sample taken)

Cultivar	Location	East of Canal	West of Canal
Baco Noir	Central	75	65
	Parkway	93	NS
	Vinemount	NS	69
Foch	Central	NS	75
	Vinemount	NS	79
Vidal	Central	78-81	74
	Lakeshore	87	NS
	Parkway	77-86	NS
	Vinemount	NS	55-69

% Live Buds - Vinifera – March 16, 2009 (NS means no sample taken)

Cultivar	Location	East of Canal	West of Canal
Cabernet Franc	Bench	72-96	60-72
	Central	68-70	54-74
	Lakeshore	72-93	66
	Parkway	69-86	NS
	Vinemount	NS	40-73
Cabernet Sauvignon	Central	NS	89
	Lakeshore	NS	62
	Parkway	85	NS
Chardonnay	Bench	75-99	65
	Central	74-81	55-94
	Lakeshore	83-93	NS
	Parkway	85-88	NS
	Vinemount	NS	58
Gamay	Parkway	89	NS
Merlot	Bench	79-93	35-49
	Central	66	56-80
	Lakeshore	89	50-60
	Parkway	80-86	NS
	Vinemount	NS	87
Pinot Noir	Bench	80-93	65-93
	Central	61	64-99
	Lakeshore	91	76
	Parkway	91	NS
	Vinemount	NS	47-98
Riesling	Bench	72-99	58-66
	Central	67-73	58-96
	Lakeshore	76-78	67
	Parkway	75-88	NS
	Vinemount	NS	76
Sauvignon Blanc	Central	65	65
	Lakeshore	81	NS
Syrah	Lakeshore	NS	31
	Parkway	50	NS