

# Winter Injury Studies 2008/09

## Grape Bud Survival

### February 23, 2009

#### Research Team

**Ken Slingerland** and **Hugh Fraser**, OMAFRA

**Kevin Ker , PhD** (*cand*), CCOVI Brock University & KCMS

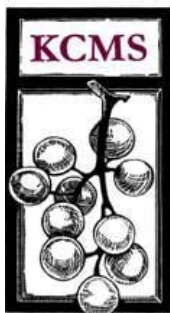
**Dr. Helen Fisher**, University of Guelph

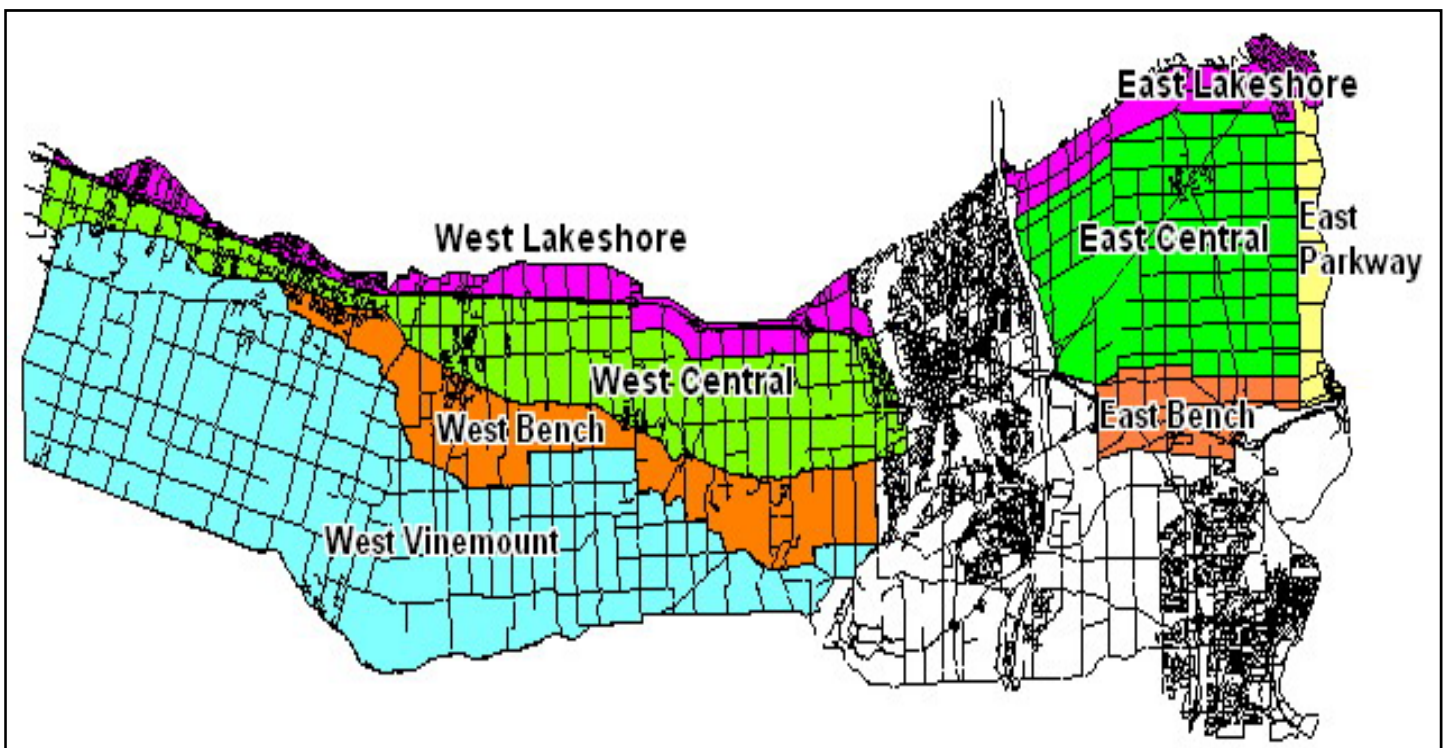
**Ryan Brewster**, KCMS Applied Research and Consulting Inc.

Grape bud sampling to establish winter survival is part of the - CanAdvance and CRESTech funded Winter Injury and Wind Machine project. The tables in this article, report the sampling results based on the bud collection during the week of February 23<sup>rd</sup>, 2009. However, the percent alive may vary up or down from the last sample due to the variation in the samples taken. The tables below are based on multiple samples and multiple sites within in area for each cultivar.

The Grape Growers of Ontario (GGO) and the Wine Council of Ontario (WCO) are the major sponsors of the project. Other partners include; Stephane Bosc – Orchard Rite; Roger Vail – Chinook; KCMS Applied Research and Consulting; Agricorp; Ontario Tender Fruit Producers' Marketing Board; the Niagara Peninsula Fruit & Vegetable Growers' Association, OMAFRA; Brock University and the University of Guelph.

The Parkway zone runs approximately 1 km along the west side of the Niagara River from Niagara-on-the-Lake to Queenston; the Lakeshore zone is approximately 1 km south of the lake from the Niagara River to Grimsby; the Central zone continues south of the Lakeshore zone to the base of the escarpment; the Bench zone starts at the south side of the Central zone to the brink of the escarpment and the Vinemount zone runs south of the Bench Zone.





### 8 Sampling Zones Used

**% Live Buds - Labrusca – February 23, 2009 (NS means no sample taken)**

Cultivar	Location	East of Canal	West of Canal
Concord	Vinemount	NS	85
Niagara	Vinemount	NS	95

**% Live Buds - Hybrids – February 23, 2009 (NS means no sample taken)**

Cultivar	Location	East of Canal	West of Canal
Baco Noir	Central	72	60
	Parkway	95	NS
	Vinemount	NS	74
Foch	Central	NS	80
	Vinemount	NS	81
Vidal	Central	80-90	75
	Lakeshore	86	NS
	Parkway	91-92	NS
	Vinemount	NS	35-42

**% Live Buds - Vinifera – February 23, 2009 (NS means no sample taken)**

<b>Cultivar</b>	<b>Location</b>	<b>East of Canal</b>	<b>West of Canal</b>
Cabernet Franc	Bench	75-98	60-92
	Central	77-78	60-70
	Lakeshore	75-82	73
	Parkway	82-84	NS
	Vinemount	NS	18-62
Cabernet Sauvignon	Central	NS	96
	Lakeshore	NS	66
	Parkway	85	NS
Chardonnay	Bench	78-95	55-69
	Central	75-84	41-89
	Lakeshore	81-90	NS
	Parkway	88-91	NS
	Vinemount	NS	42
Gamay	Parkway	96	NS
Merlot	Bench	70-95	20-60
	Central	71	58-72
	Lakeshore	81	68-77
	Parkway	92-95	NS
	Vinemount	NS	43
Pinot Noir	Bench	75-95	52-71
	Central	87	68-96
	Lakeshore	84	80
	Parkway	90	NS
	Vinemount	NS	20-62
Riesling	Bench	72-80	48-65
	Central	80-84	48-97
	Lakeshore	75-85	79
	Parkway	81-85	NS
	Vinemount	NS	56
Sauvignon Blanc	Central	73	75
	Lakeshore	80	NS
Syrah	Lakeshore	NS	35
	Parkway	56	NS