

Winter Injury Studies 2008/09

Grape Bud Survival

February 9, 2009

Research Team

Ken Slingerland and **Hugh Fraser**, OMAFRA

Kevin Ker, PhD (cand), CCOVI Brock University & KCMS

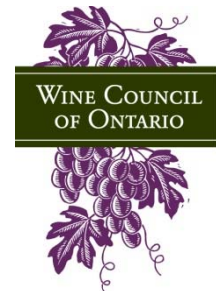
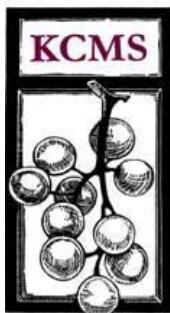
Dr. Helen Fisher, University of Guelph

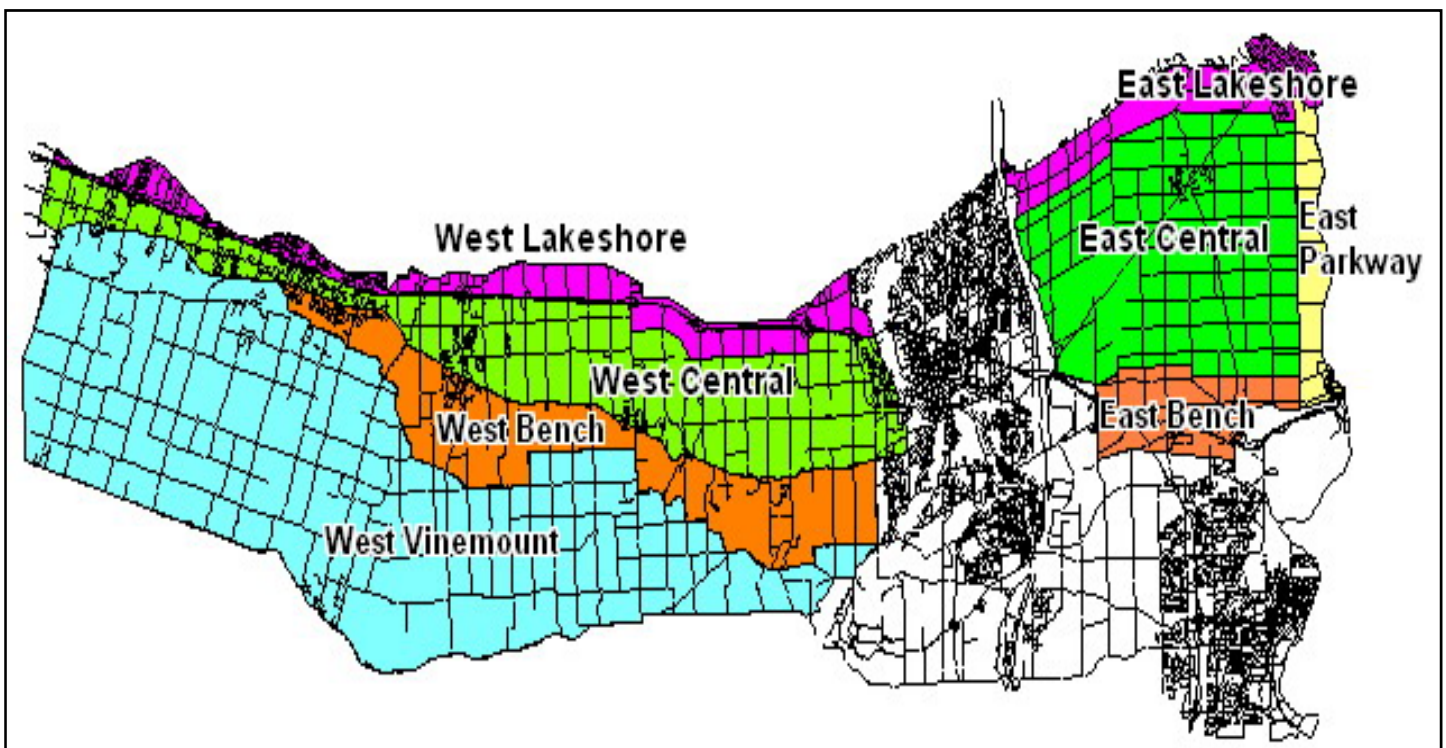
Ryan Brewster, KCMS Applied Research and Consulting Inc.

Grape bud sampling to establish winter survival is part of the - CanAdvance and CRESTech funded Winter Injury and Wind Machine project. The tables in this article, report the sampling results based on the bud collection during the week of February 9th, 2009. However, the percent alive may vary up or down from the last sample due to the variation in the samples taken. The tables below are based on multiple samples and multiple sites within in area for each cultivar.

The Grape Growers of Ontario (GGO) and the Wine Council of Ontario (WCO) are the major sponsors of the project. Other partners include; Stephane Bosc – Orchard Rite; Roger Vail – Chinook; KCMS Applied Research and Consulting; Agricorp; Ontario Tender Fruit Producers' Marketing Board; the Niagara Peninsula Fruit & Vegetable Growers' Association, OMAFRA; Brock University and the University of Guelph.

The Parkway zone runs approximately 1 km along the west side of the Niagara River from Niagara-on-the-Lake to Queenston; the Lakeshore zone is approximately 1 km south of the lake from the Niagara River to Grimsby; the Central zone continues south of the Lakeshore zone to the base of the escarpment; the Bench zone starts at the south side of the Central zone to the brink of the escarpment and the Vinemount zone runs south of the Bench Zone.





8 Sampling Zones Used

% Live Buds - Labrusca – February 9, 2009 (NS means no sample taken)

Cultivar	Location	East of Canal	West of Canal
Concord	Vinemount	NS	88
Niagara	Vinemount	NS	93

% Live Buds - Hybrids – February 9, 2009 (NS means no sample taken)

Cultivar	Location	East of Canal	West of Canal
Baco Noir	Central	97	81
	Parkway	86	NS
	Vinemount	NS	77
Foch	Central	NS	79-89
	Vinemount	NS	67
Vidal	Central	75-93	74
	Lakeshore	88	NS
	Parkway	93-96	NS
	Vinemount	NS	54-71

% Live Buds - Vinifera – February 9, 2009 (NS means no sample taken)

Cultivar	Location	East of Canal	West of Canal
Cabernet Franc	Bench	88-94	63-78
	Central	87-88	68-81
	Lakeshore	68-84	78
	Parkway	71-86	NS
	Vinemount	NS	53-80
Cabernet Sauvignon	Central	NS	91
	Lakeshore	NS	69
	Parkway	87	NS
Chardonnay	Bench	82-98	65-74
	Central	85-88	49-92
	Lakeshore	83-84	NS
	Parkway	89-95	NS
	Vinemount	NS	26
Gamay	Parkway	91	NS
Merlot	Bench	75-95	44-59
	Central	79	34-65
	Lakeshore	81	69-75
	Parkway	82-86	NS
	Vinemount	NS	41
Pinot Noir	Bench	78-91	65-95
	Central	89	75-99
	Lakeshore	62	75
	Parkway	98	NS
	Vinemount	NS	66-71
Riesling	Bench	80-93	70-75
	Central	85-90	79-91
	Lakeshore	82-88	77
	Parkway	86-88	NS
	Vinemount	NS	44-73
Sauvignon Blanc	Central	93	75
	Lakeshore	70	NS
Syrah	Lakeshore	NS	60
	Parkway	63	NS