

# Winter Injury Studies 2008/09

## Grape Bud Survival

### November 17, 2008

#### Research Team

*Ken Slingerland* and *Hugh Fraser*, OMAFRA

*Kevin Ker*, PhD (cand), CCOVI Brock University & KCMS

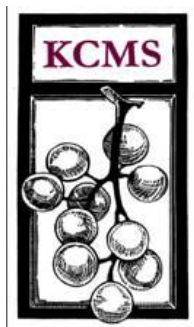
*Dr. Helen Fisher*, University of Guelph

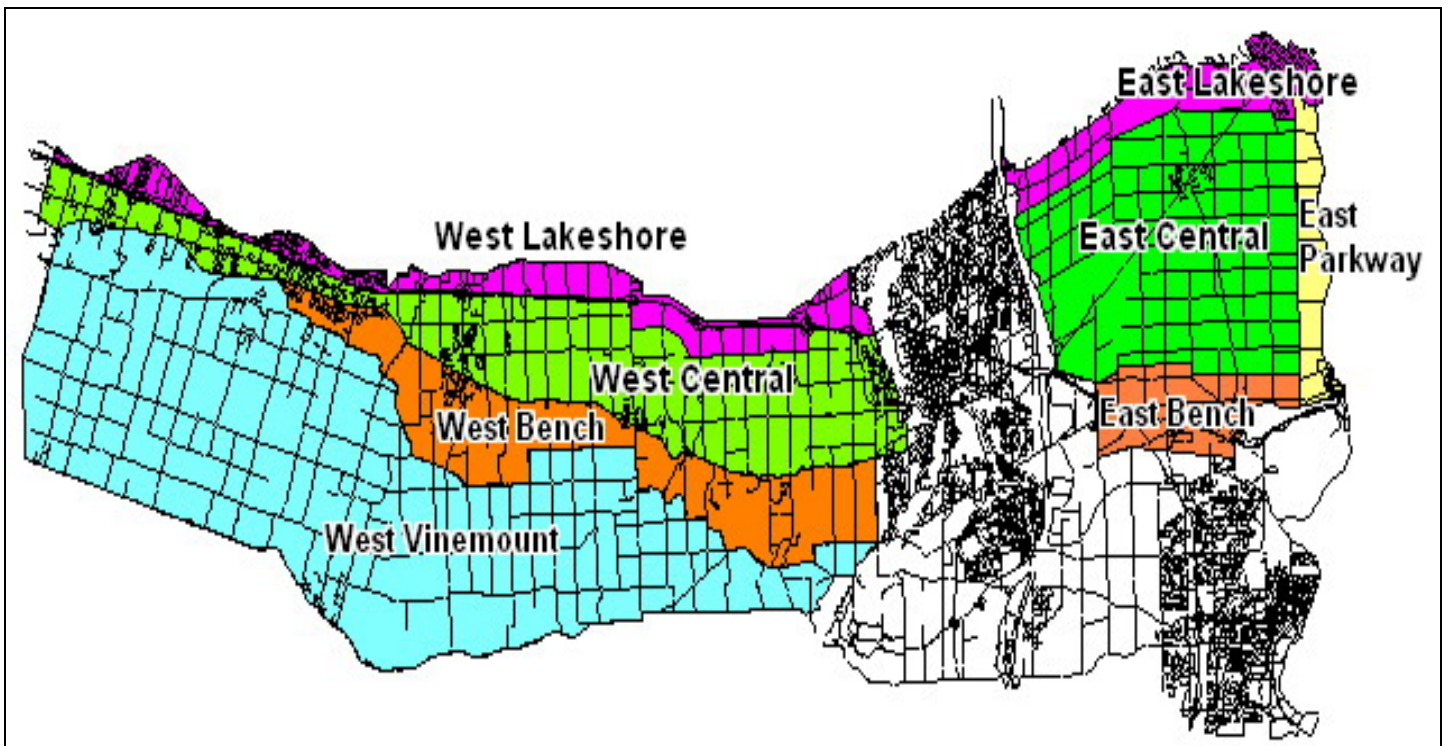
*Ryan Brewster*, KCMS Applied Research and Consulting Inc.

Grape bud sampling to establish winter survival is part of the - CanAdvance and CRESTech funded Winter Injury and Wind Machine project. The tables in this article, report the sampling results based on the bud collection during the week of November 17<sup>th</sup>, 2008. However, the percent alive may vary up or down from the last sample due to the variation in the samples taken. The tables below are based on multiple samples and multiple sites within in area for each cultivar.

The Grape Growers of Ontario (GGO) and the Wine Council of Ontario (WCO) are the major sponsors of the project. Other partners include; Stephane Bosc – Orchard Rite; Roger Vail – Chinook; KCMS Applied Research and Consulting; Agricorp; Ontario Tender Fruit Producers' Marketing Board; the Niagara Peninsula Fruit & Vegetable Growers' Association, OMAFRA; Brock University and the University of Guelph.

The Parkway zone runs approximately 1 km along the west side of the Niagara River from Niagara-on-the-Lake to Queenston; the Lakeshore zone is approximately 1 km south of the lake from the Niagara River to Grimsby; the Central zone continues south of the Lakeshore zone to the base of the escarpment; the Bench zone starts at the south side of the Central zone to the brink of the escarpment and the Vinemount zone runs south of the Bench Zone.





### 8 Sampling Zones Used

**% Live Buds - Labrusca – November 17, 2008 (NS means no sample taken)**

Cultivar	Location	East of Canal	West of Canal
Concord	Vinemount	NS	100
Niagara	Vinemount	NS	99-100

**% Live Buds - Hybrids – November 17, 2008 (NS means no sample taken)**

Cultivar	Location	East of Canal	West of Canal
Baco Noir	Central	100	100
	Parkway	100	NS
	Vinemount	NS	99
Foch	Central	NS	91-99
	Vinemount	NS	100
Vidal	Central	96-99	98
	Lakeshore	96	NS
	Parkway	98-100	NS
	Vinemount	NS	98

**% Live Buds - Vinifera – November 17, 2008 (NS means no sample taken)**

<b>Cultivar</b>	<b>Location</b>	<b>East of Canal</b>	<b>West of Canal</b>
Cabernet Franc	Bench	87-95	94-100
	Central	97-99	95-100
	Lakeshore	67-91	99
	Parkway	96-100	NS
	Vinemount	NS	93-98
Cabernet Sauvignon	Central	NS	97
	Lakeshore	NS	98
	Parkway	97	NS
Chardonnay	Bench	98-99	98-100
	Central	97-99	95-99
	Lakeshore	95-99	NS
	Parkway	98-99	NS
	Vinemount	NS	92
Gamay	Parkway	96	NS
Merlot	Bench	94-100	97-99
	Central	97	98-100
	Lakeshore	97	95-98
	Parkway	95-99	NS
	Vinemount	NS	86
Pinot Noir	Bench	94-99	95-99
	Central	97	92-100
	Lakeshore	66	95
	Parkway	99	NS
	Vinemount	NS	77-99
Riesling	Bench	98-100	92-99
	Central	91-95	96-100
	Lakeshore	93-97	100
	Parkway	91-95	NS
	Vinemount	NS	93
Sauvignon Blanc	Central	100	100
	Lakeshore	93	NS
Syrah	Lakeshore	NS	99
	Parkway	73	NS