

Winter Injury Studies 2007/08

Grape Bud Survival

January 14, 2008

Research Team

Ken Slingerland and *Hugh Fraser*, OMAFRA

Kevin Ker, PhD (cand), CCOVI Brock University & KCMS

Dr. Helen Fisher, University of Guelph

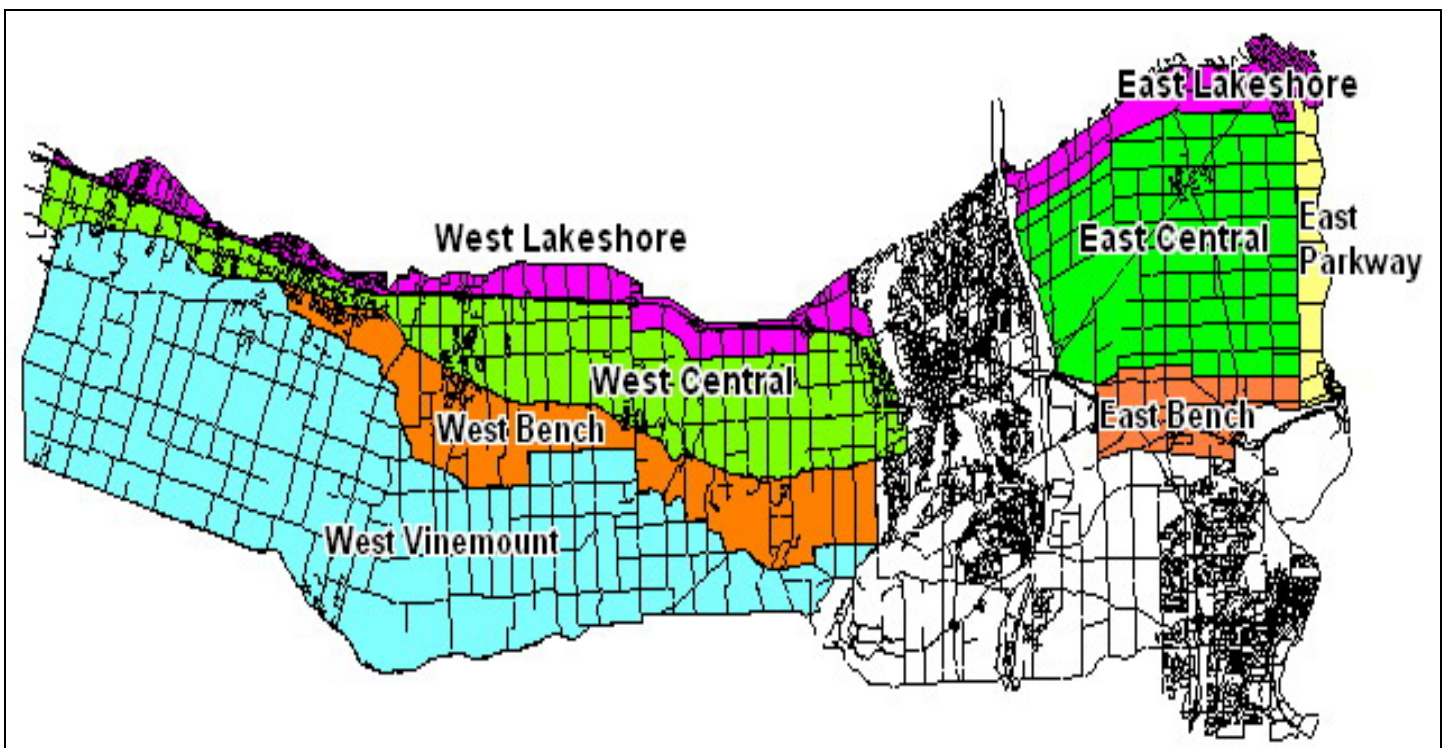
Ryan Brewster, KCMS Applied Research and Consulting Inc.

Grape bud sampling to establish winter survival is part of the 3 year - CanAdvance and CRESTech funded Winter Injury and Wind Machine project. The tables in this article, report the sampling results based on the bud collection during the week of January 14th, 2008. However, the percent alive may vary up or down from the last sample due to the variation in the samples taken. The tables below are based on multiple samples and multiple sites within in area for each cultivar.

The Grape Growers of Ontario (GGO) and the Wine Council of Ontario (WCO) are the major sponsors of the project. Other partners include; Stephane Bosc – Orchard Rite; Roger Vail – Chinook; KCMS Applied Research and Consulting; Agricorp; Ontario Tender Fruit Producers' Marketing Board; the Niagara Peninsula Fruit & Vegetable Growers' Association, OMAFRA; Brock University and the University of Guelph.

The Parkway zone runs approximately 1 km along the west side of the Niagara River from Niagara-on-the-Lake to Queenston; the Lakeshore zone is approximately 1 km south of the lake from the Niagara River to Grimsby; the Central zone continues south of the Lakeshore zone to the base of the escarpment; the Bench zone starts at the south side of the Central zone to the brink of the escarpment and the Vinemount zone runs south of the Bench Zone.





8 Sampling Zones Used

% Live Buds - Labrusca – January 14, 2008 (NS means no sample taken)

Cultivar	Location	East of Canal	West of Canal
Concord	Vinemount	NS	100
Niagara	Vinemount	NS	96-100

% Live Buds - Hybrids – January 14, 2008 (NS means no sample taken)

Cultivar	Location	East of Canal	West of Canal
Baco Noir	Central	100	99
	Parkway	100	NS
	Vinemount	NS	99
Foch	Central	NS	95-97
	Vinemount	NS	98
Vidal	Central	96-98	98
	Lakeshore	97	NS
	Parkway	97-99	NS
	Vinemount	NS	100

% Live Buds - Vinifera – January 14, 2008 (NS means no sample taken)

Cultivar	Location	East of Canal	West of Canal
Cabernet Franc	Bench	93-97	94-99
	Central	92-97	85-99
	Lakeshore	94	99
	Parkway	96-98	NS
	Vinemount	NS	96-97
Cabernet Sauvignon	Central	NS	100
	Lakeshore	NS	97
	Parkway	99	NS
Chardonnay	Bench	94-99	93-96
	Central	97-99	97-99
	Lakeshore	90-97	NS
	Parkway	93-97	NS
	Vinemount	NS	96
Gamay	Parkway	99	NS
Merlot	Bench	91-96	97-100
	Central	99	99-100
	Lakeshore	94	99
	Parkway	99	NS
	Vinemount	NS	100
Pinot Noir	Bench	74-95	93-98
	Central	94	84-97
	Lakeshore	92	97-98
	Parkway	99	NS
	Vinemount	NS	95-99
Riesling	Bench	95-100	92-98
	Central	95	96-100
	Lakeshore	73-97	97
	Parkway	90-98	NS
	Vinemount	NS	93-97
Sauvignon Blanc	Central	94	96
	Lakeshore	91	NS
Syrah	Lakeshore	NS	94
	Parkway	89	NS