

Winter Injury Studies 2007/08

Grape Bud Survival

February 25, 2008

Research Team

Ken Slingerland and *Hugh Fraser*, OMAFRA

Kevin Ker, PhD (cand), CCOVI Brock University & KCMS

Dr. Helen Fisher, University of Guelph

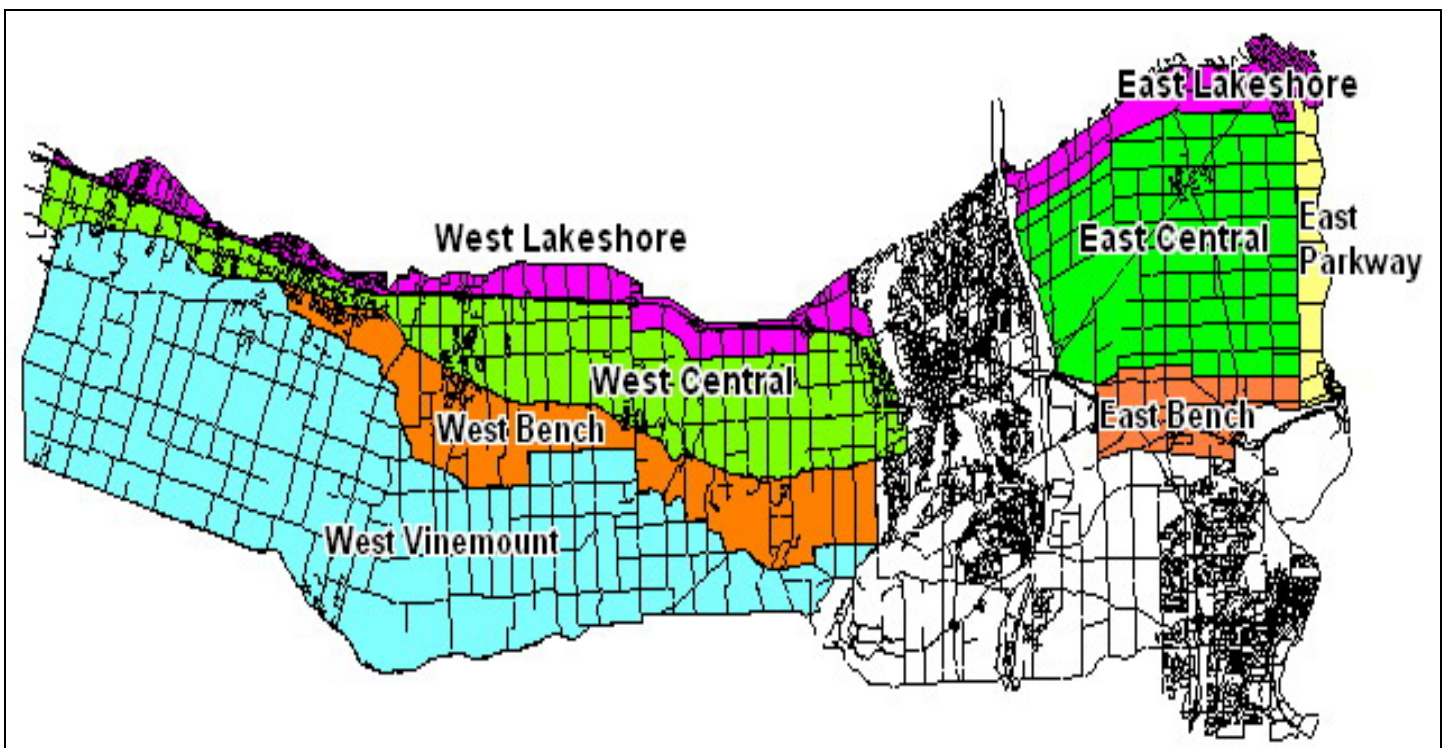
Ryan Brewster, KCMS Applied Research and Consulting Inc.

Grape bud sampling to establish winter survival is part of the 3 year - CanAdvance and CRESTech funded Winter Injury and Wind Machine project. The tables in this article, report the sampling results based on the bud collection during the week of February 25th, 2008. However, the percent alive may vary up or down from the last sample due to the variation in the samples taken. The tables below are based on multiple samples and multiple sites within in area for each cultivar.

The Grape Growers of Ontario (GGO) and the Wine Council of Ontario (WCO) are the major sponsors of the project. Other partners include; Stephane Bosc – Orchard Rite; Roger Vail – Chinook; KCMS Applied Research and Consulting; Agricorp; Ontario Tender Fruit Producers' Marketing Board; the Niagara Peninsula Fruit & Vegetable Growers' Association, OMAFRA; Brock University and the University of Guelph.

The Parkway zone runs approximately 1 km along the west side of the Niagara River from Niagara-on-the-Lake to Queenston; the Lakeshore zone is approximately 1 km south of the lake from the Niagara River to Grimsby; the Central zone continues south of the Lakeshore zone to the base of the escarpment; the Bench zone starts at the south side of the Central zone to the brink of the escarpment and the Vinemount zone runs south of the Bench Zone.





8 Sampling Zones Used

% Live Buds - Labrusca – February 25, 2008 (NS means no sample taken)

Cultivar	Location	East of Canal	West of Canal
Concord	Vinemount	NS	95
Niagara	Vinemount	NS	99

% Live Buds - Hybrids – February 25, 2008 (NS means no sample taken)

Cultivar	Location	East of Canal	West of Canal
Baco Noir	Central	All Pruned	89
	Parkway	All Pruned	NS
	Vinemount	NS	92
Foch	Central	NS	90
	Vinemount	NS	85
Vidal	Central	88	85
	Lakeshore	81	NS
	Parkway	66-74	NS
	Vinemount	NS	73-85

% Live Buds - Vinifera – February 25, 2008 (NS means no sample taken)

Cultivar	Location	East of Canal	West of Canal
Cabernet Franc	Bench	66-78	70-98
	Central	72-93	42-88
	Lakeshore	99	68
	Parkway	89-94	NS
	Vinemount	NS	87-98
Cabernet Sauvignon	Central	NS	97
	Lakeshore	NS	79
	Parkway	80	NS
Chardonnay	Bench	76-96	80-88
	Central	80	89-91
	Lakeshore	90	NS
	Parkway	86-88	NS
	Vinemount	NS	92
Gamay	Parkway	97	NS
Merlot	Bench	40-44	49-82
	Central	92	35-81
	Lakeshore	87	77-79
	Parkway	93-97	NS
	Vinemount	NS	38
Pinot Noir	Bench	65-92	75-92
	Central	90	78-100
	Lakeshore	88	75-80
	Parkway	87	NS
	Vinemount	NS	86-96
Riesling	Bench	53-99	68-91
	Central	87-94	73-100
	Lakeshore	86-88	85
	Parkway	75-81	NS
	Vinemount	NS	93-97
Sauvignon Blanc	Central	91	NS
	Lakeshore	78	NS
Syrah	Lakeshore	NS	74
	Parkway	73	NS