

# Winter Injury Studies 2007/08

## Grape Bud Survival

### February 11, 2008

#### Research Team

**Ken Slingerland** and **Hugh Fraser**, OMAFRA

**Kevin Ker**, PhD (cand), CCOVI Brock University & KCMS

**Dr. Helen Fisher**, University of Guelph

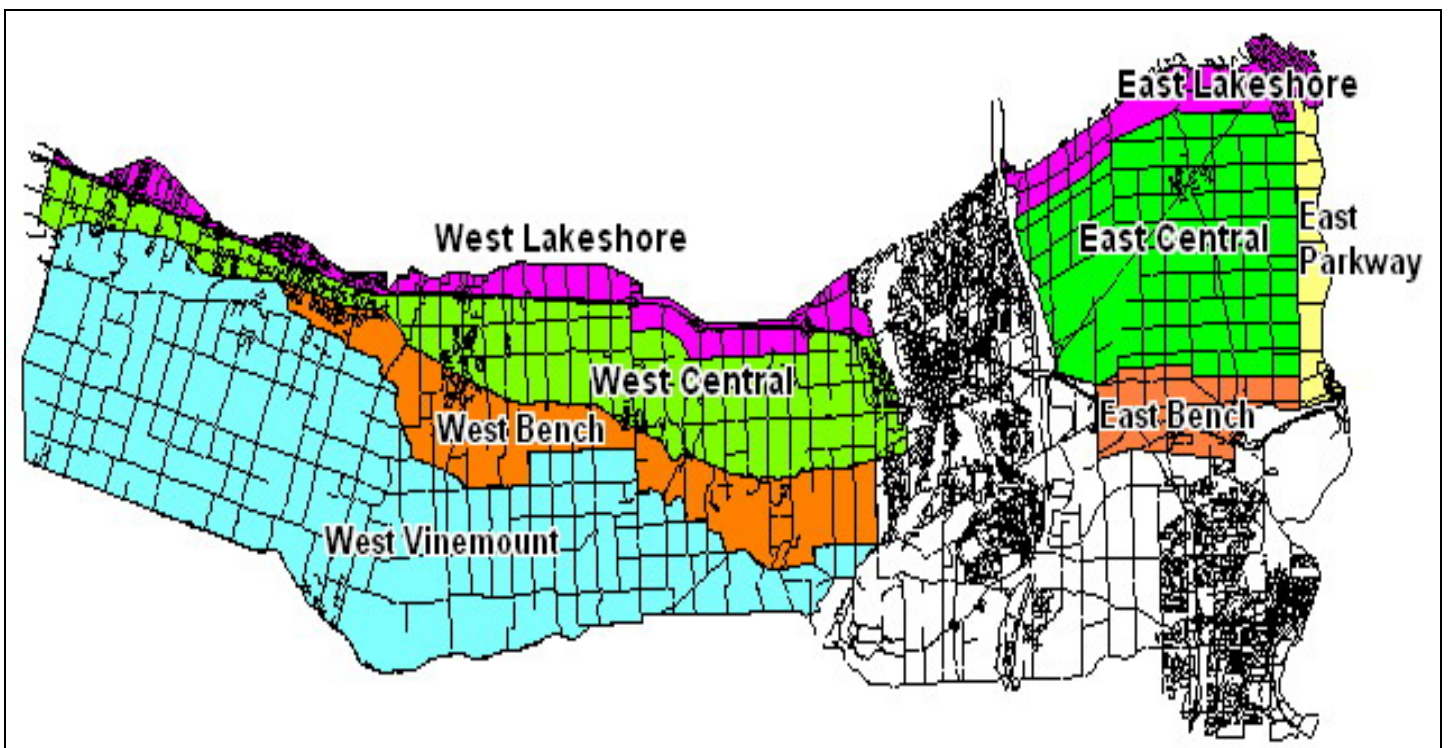
**Ryan Brewster**, KCMS Applied Research and Consulting Inc.

Grape bud sampling to establish winter survival is part of the 3 year - CanAdvance and CRESTech funded Winter Injury and Wind Machine project. The tables in this article, report the sampling results based on the bud collection during the week of February 11<sup>th</sup>, 2008. However, the percent alive may vary up or down from the last sample due to the variation in the samples taken. The tables below are based on multiple samples and multiple sites within in area for each cultivar.

The Grape Growers of Ontario (GGO) and the Wine Council of Ontario (WCO) are the major sponsors of the project. Other partners include; Stephane Bosc – Orchard Rite; Roger Vail – Chinook; KCMS Applied Research and Consulting; Agricorp; Ontario Tender Fruit Producers' Marketing Board; the Niagara Peninsula Fruit & Vegetable Growers' Association, OMAFRA; Brock University and the University of Guelph.

The Parkway zone runs approximately 1 km along the west side of the Niagara River from Niagara-on-the-Lake to Queenston; the Lakeshore zone is approximately 1 km south of the lake from the Niagara River to Grimsby; the Central zone continues south of the Lakeshore zone to the base of the escarpment; the Bench zone starts at the south side of the Central zone to the brink of the escarpment and the Vinemount zone runs south of the Bench Zone.





### 8 Sampling Zones Used

**% Live Buds - Labrusca – February 11, 2008 (NS means no sample taken)**

Cultivar	Location	East of Canal	West of Canal
Concord	Vinemount	NS	92
Niagara	Vinemount	NS	99

**% Live Buds - Hybrids – February 11, 2008 (NS means no sample taken)**

Cultivar	Location	East of Canal	West of Canal
Baco Noir	Central	All Pruned	92
	Parkway	All Pruned	NS
	Vinemount	NS	79
Foch	Central	NS	93
	Vinemount	NS	83
Vidal	Central	90	96
	Lakeshore	90	NS
	Parkway	75-81	NS
	Vinemount	NS	68-90

**% Live Buds - Vinifera – February 11, 2008 (NS means no sample taken)**

<b>Cultivar</b>	<b>Location</b>	<b>East of Canal</b>	<b>West of Canal</b>
Cabernet Franc	Bench	68-93	79-85
	Central	56-95	38-92
	Lakeshore	83-88	78
	Parkway	81-94	NS
	Vinemount	NS	85-92
Cabernet Sauvignon	Central	NS	97
	Lakeshore	NS	84
	Parkway	95	NS
Chardonnay	Bench	75-95	78-83
	Central	88	83-96
	Lakeshore	86-99	NS
	Parkway	86-90	NS
	Vinemount	NS	94
Gamay	Parkway	96	NS
Merlot	Bench	38-64	46-91
	Central	85	58-92
	Lakeshore	92	80-89
	Parkway	91-97	NS
	Vinemount	NS	54
Pinot Noir	Bench	88-92	86-93
	Central	89	79-98
	Lakeshore	96	90-93
	Parkway	93	NS
	Vinemount	NS	77-89
Riesling	Bench	63-94	82-85
	Central	85-95	72-94
	Lakeshore	71-78	88
	Parkway	79-86	NS
	Vinemount	NS	79-96
Sauvignon Blanc	Central	75	75
	Lakeshore	89	NS
Syrah	Lakeshore	NS	78
	Parkway	72	NS