

Winter Injury Studies 2007/08

Grape Bud Survival

January 28, 2008

Research Team

Ken Slingerland and *Hugh Fraser*, OMAFRA

Kevin Ker, PhD (cand), CCOVI Brock University & KCMS

Dr. Helen Fisher, University of Guelph

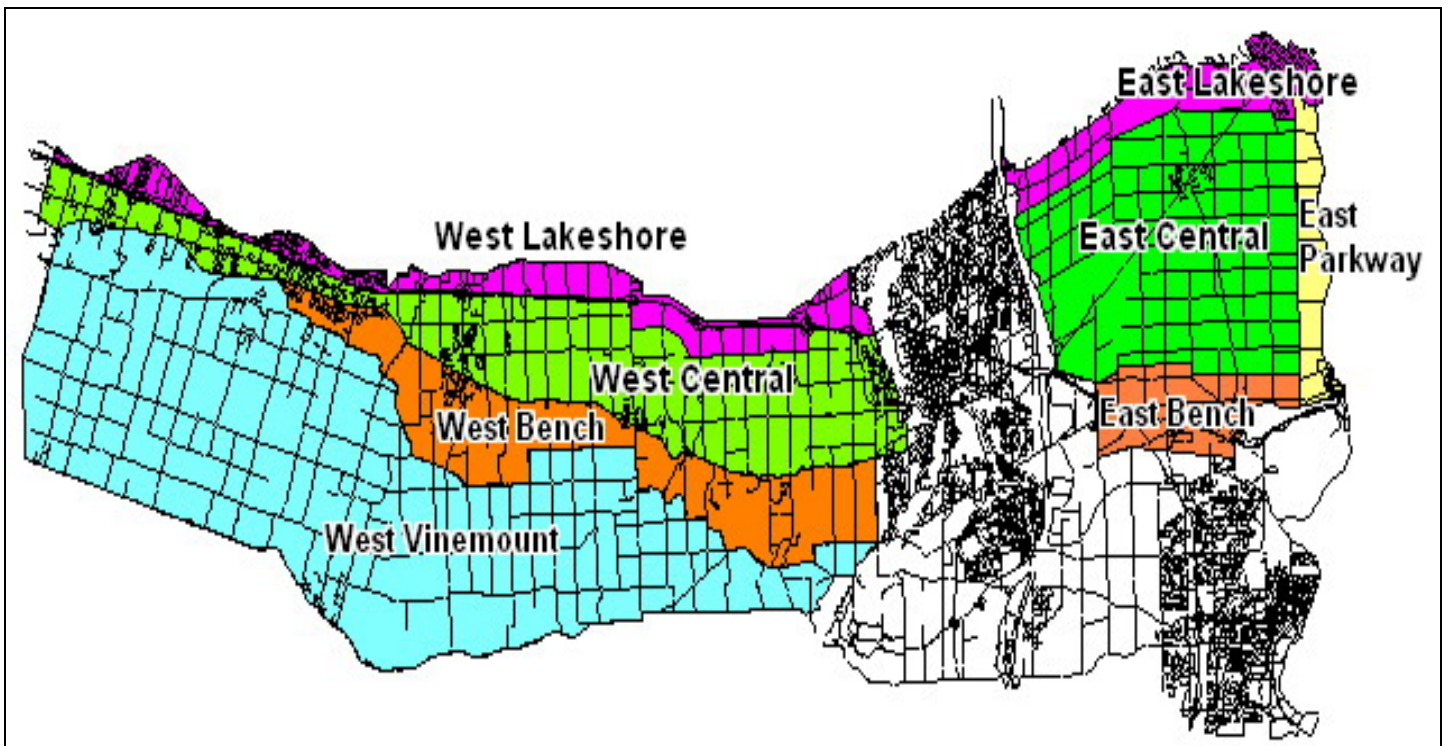
Ryan Brewster, KCMS Applied Research and Consulting Inc.

Grape bud sampling to establish winter survival is part of the 3 year - CanAdvance and CRESTech funded Winter Injury and Wind Machine project. The tables in this article, report the sampling results based on the bud collection during the week of January 28th, 2008. However, the percent alive may vary up or down from the last sample due to the variation in the samples taken. The tables below are based on multiple samples and multiple sites within in area for each cultivar.

The Grape Growers of Ontario (GGO) and the Wine Council of Ontario (WCO) are the major sponsors of the project. Other partners include; Stephane Bosc – Orchard Rite; Roger Vail – Chinook; KCMS Applied Research and Consulting; Agricorp; Ontario Tender Fruit Producers' Marketing Board; the Niagara Peninsula Fruit & Vegetable Growers' Association, OMAFRA; Brock University and the University of Guelph.

The Parkway zone runs approximately 1 km along the west side of the Niagara River from Niagara-on-the-Lake to Queenston; the Lakeshore zone is approximately 1 km south of the lake from the Niagara River to Grimsby; the Central zone continues south of the Lakeshore zone to the base of the escarpment; the Bench zone starts at the south side of the Central zone to the brink of the escarpment and the Vinemount zone runs south of the Bench Zone.





8 Sampling Zones Used

% Live Buds - Labrusca – January 28, 2008 (NS means no sample taken)

Cultivar	Location	East of Canal	West of Canal
Concord	Vinemount	NS	96
Niagara	Vinemount	NS	99

% Live Buds - Hybrids – January 28, 2008 (NS means no sample taken)

Cultivar	Location	East of Canal	West of Canal
Baco Noir	Central	98	99
	Parkway	96	NS
	Vinemount	NS	98
Foch	Central	NS	94-98
	Vinemount	NS	98
Vidal	Central	95-96	95-96
	Lakeshore	96	NS
	Parkway	96-98	NS
	Vinemount	NS	90-98

% Live Buds - Vinifera – January 28, 2008 (NS means no sample taken)

Cultivar	Location	East of Canal	West of Canal
Cabernet Franc	Bench	94-100	94-99
	Central	83-97	85-99
	Lakeshore	92-94	97
	Parkway	95-98	NS
	Vinemount	NS	91-95
Cabernet Sauvignon	Central	NS	95
	Lakeshore	NS	94
	Parkway	100	NS
Chardonnay	Bench	96-99	95-96
	Central	93-96	92-100
	Lakeshore	90-95	NS
	Parkway	91-95	NS
	Vinemount	NS	100
Gamay	Parkway	95	NS
Merlot	Bench	93-97	92-100
	Central	96	81-100
	Lakeshore	97	97-98
	Parkway	97-99	NS
	Vinemount	NS	100
Pinot Noir	Bench	92-97	93-98
	Central	85	92-97
	Lakeshore	100	93-96
	Parkway	95	NS
	Vinemount	NS	94-95
Riesling	Bench	94-99	93-95
	Central	87-97	70-100
	Lakeshore	68-97	95
	Parkway	94-96	NS
	Vinemount	NS	91-98
Sauvignon Blanc	Central	93	90
	Lakeshore	91	NS
Syrah	Lakeshore	NS	86
	Parkway	83	NS