

Winter Injury Studies 2007/08

Grape Bud Survival

December 17, 2007

Research Team

Ken Slingerland and **Hugh Fraser**, OMAFRA

Kevin Ker, PhD (cand), CCOVI Brock University & KCMS

Dr. Helen Fisher, University of Guelph

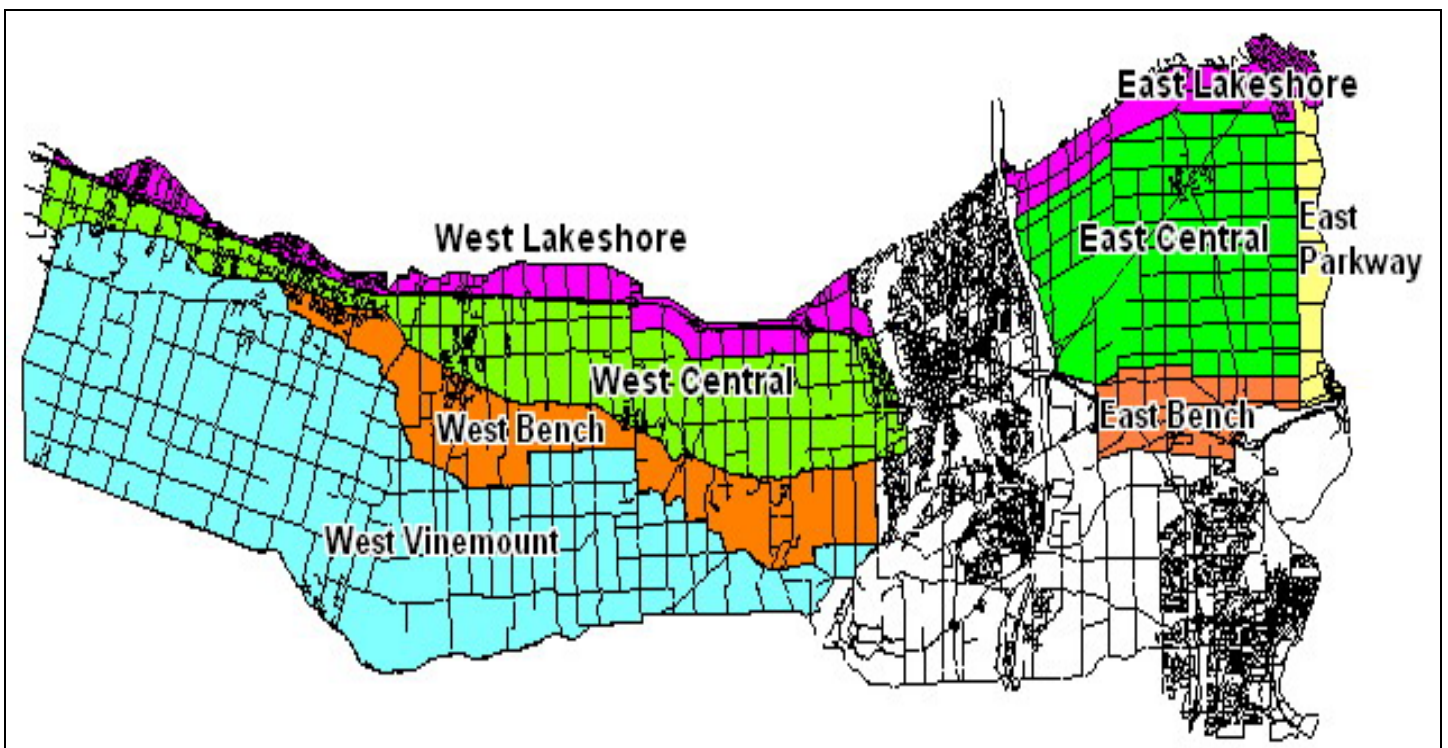
Ryan Brewster, KCMS Applied Research and Consulting Inc.

Grape bud sampling to establish winter survival is part of the 3 year - CanAdvance and CRESTech funded Winter Injury and Wind Machine project. The tables in this article, report the sampling results based on the bud collection during the week of December 17th, 2007. However, the percent alive may vary up or down from the last sample due to the variation in the samples taken. The tables below are based on multiple samples and multiple sites within in area for each cultivar.

The Grape Growers of Ontario (GGO) and the Wine Council of Ontario (WCO) are the major sponsors of the project. Other partners include; Stephane Bosc – Orchard Rite; Roger Vail – Chinook; KCMS Applied Research and Consulting; Agricorp; Ontario Tender Fruit Producers' Marketing Board; the Niagara Peninsula Fruit & Vegetable Growers' Association, OMAFRA; Brock University and the University of Guelph.

The Parkway zone runs approximately 1 km along the west side of the Niagara River from Niagara-on-the-Lake to Queenston; the Lakeshore zone is approximately 1 km south of the lake from the Niagara River to Grimsby; the Central zone continues south of the Lakeshore zone to the base of the escarpment; the Bench zone starts at the south side of the Central zone to the brink of the escarpment and the Vinemount zone runs south of the Bench Zone.





8 Sampling Zones Used

% Live Buds - Labrusca – December 17, 2007 (NS means no sample taken)

Cultivar	Location	East of Canal	West of Canal
Concord	Vinemount	NS	99
Niagara	Vinemount	NS	100

% Live Buds - Hybrids – December 17, 2007 (NS means no sample taken)

Cultivar	Location	East of Canal	West of Canal
Baco Noir	Central	98	100
	Parkway	99	NS
	Vinemount	NS	99
Foch	Central	NS	94-95
	Vinemount	NS	98
Vidal	Central	94-98	91-99
	Lakeshore	95	NS
	Parkway	98-100	NS
	Vinemount	NS	100

% Live Buds - Vinifera – December 17, 2007 (NS means no sample taken)

Cultivar	Location	East of Canal	West of Canal
Cabernet Franc	Bench	99-100	94-100
	Central	95-96	80-100
	Lakeshore	96-100	97
	Parkway	96-100	NS
	Vinemount	NS	96-97
Cabernet Sauvignon	Central	NS	95
	Lakeshore	NS	97
	Parkway	100	NS
Chardonnay	Bench	97-100	97
	Central	97-98	91-100
	Lakeshore	95-99	NS
	Parkway	95-98	NS
	Vinemount	NS	100
Gamay	Parkway	98	NS
Merlot	Bench	81-99	99-100
	Central	99	99-100
	Lakeshore	99	98-99
	Parkway	100	NS
	Vinemount	NS	100
Pinot Noir	Bench	98	98-100
	Central	82	92-99
	Lakeshore	91	90-95
	Parkway	98	NS
	Vinemount	NS	80-91
Riesling	Bench	98-99	95-96
	Central	97-98	94-100
	Lakeshore	91-100	97
	Parkway	95-99	NS
	Vinemount	NS	92-100
Sauvignon Blanc	Central	74	90
	Lakeshore	96	NS
Syrah	Lakeshore	NS	91
	Parkway	75	NS