

# Winter Injury Studies 2006

## Grape Bud Survival

### March 6-10, 2006

#### Research Team

*Ken Slingerland* and *Hugh Fraser*, OMAFRA

*Kevin Ker*, CCOVI Brock University & KCMS

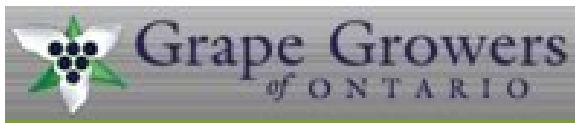
*Dr. Helen Fisher*, University of Guelph

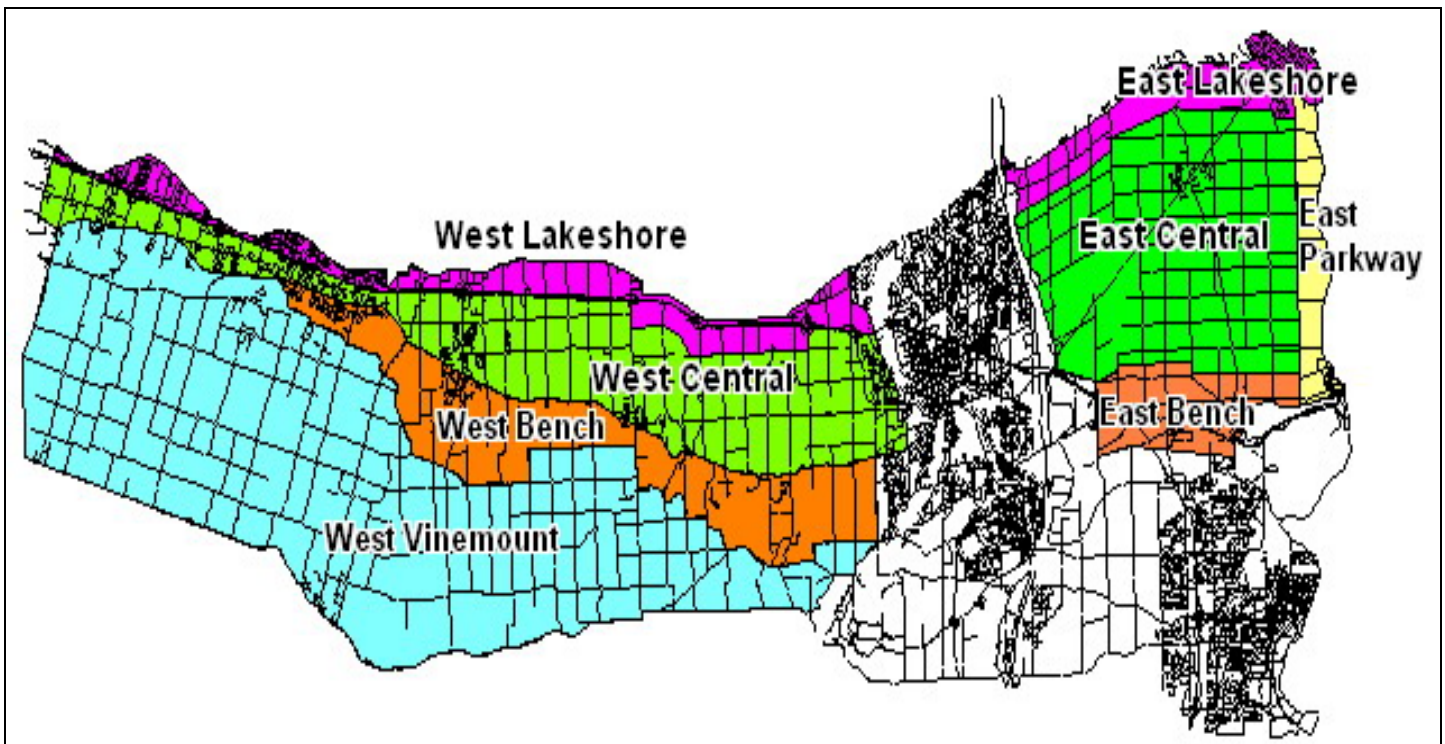
*Ryan Brewster*, KCMS Applied Research and Consulting Inc.

Grape bud sampling to establish winter survival is part of the 3 year - CanAdvance and CRESTech funded Winter Injury and Wind Machine project. The tables in this article report the sampling results based on the bud collection during the week of March 6-10, 2006. However, the percent alive may vary up or down from the last sample due to the variation in the samples taken. The tables below are based on multiple samples and multiple sites within in area for each cultivar.

The Grape Growers of Ontario (GGO) and the Wine Council of Ontario (WCO) are the major sponsors of the project. Other partners include; Stephane Bosc – Orchard Rite; Roger Vail – Chinook; KCMS Applied Research and Consulting; Agricorp; Ontario Tender Fruit Producers' Marketing Board; the Niagara Peninsula Fruit & Vegetable Growers' Association, OMAFRA; Brock University and the University of Guelph.

The Parkway zone runs approximately 1 km along the west side of the Niagara River from Niagara-on-the-Lake to Queenston; the Lakeshore zone is approximately 1 km south of the lake from the Niagara River to Grimsby; the Central zone continues south of the Lakeshore zone to the base of the escarpment; the Bench zone starts at the south side of the Central zone to the brink of the escarpment and the Vinemount zone runs south of the Bench Zone.





### 8 Sampling Zones Used

**% Live Buds - Labrusca – March 6-10, 2006 (NS means no sample taken)**

Cultivar	Location	East of Canal	West of Canal
Concord	Vinemount	NS	91-93
Niagara	Vinemount	NS	92-94

**% Live Buds - Hybrids – March 6-10, 2006 (NS means no sample taken)**

Cultivar	Location	East of Canal	West of Canal
Baco Noir	Central	94	82
	Parkway	86	NS
Foch	Central	NS	84-89
	Vinemount	NS	88
Vidal	Central	84-89	65-85
	Lakeshore	74	NS
	Parkway	71-77	NS
	Vinemount	NS	55-70

**% Live Buds - Vinifera – March 6-10, 2006 (NS means no sample taken)**

<b>Cultivar</b>	<b>Location</b>	<b>East of Canal</b>	<b>West of Canal</b>
Cabernet Franc	Bench	65-85	82-95
	Central	86-90	80-84
	Lakeshore	81-82	82
	Parkway	77-86	NS
	Vinemount	NS	84-85
Cabernet Sauvignon	Central	NS	77
	Lakeshore	NS	77
	Parkway	72	NS
Chardonnay	Bench	75-90	82-92
	Central	85-92	94
	Lakeshore	84-86	NS
	Parkway	86-88	NS
	Vinemount	NS	83
Gamay	Parkway	97	NS
Merlot	Bench	83-95	86-99
	Central	71	66-94
	Lakeshore	88	87-93
	Parkway	88-91	NS
	Vinemount	NS	87
Pinot Noir	Bench	98	78-80
	Central	89	80-90
	Lakeshore	79	77-81
	Parkway	88	NS
	Vinemount	NS	80-87
Riesling	Bench	73-94	85-87
	Central	77-89	69-97
	Lakeshore	83	86
	Parkway	72-77	NS
	Vinemount	NS	66-87
Sauvignon Blanc	Central	85	88
	Lakeshore	59	NS
Syrah	Lakeshore	NS	64
	Parkway	43	NS