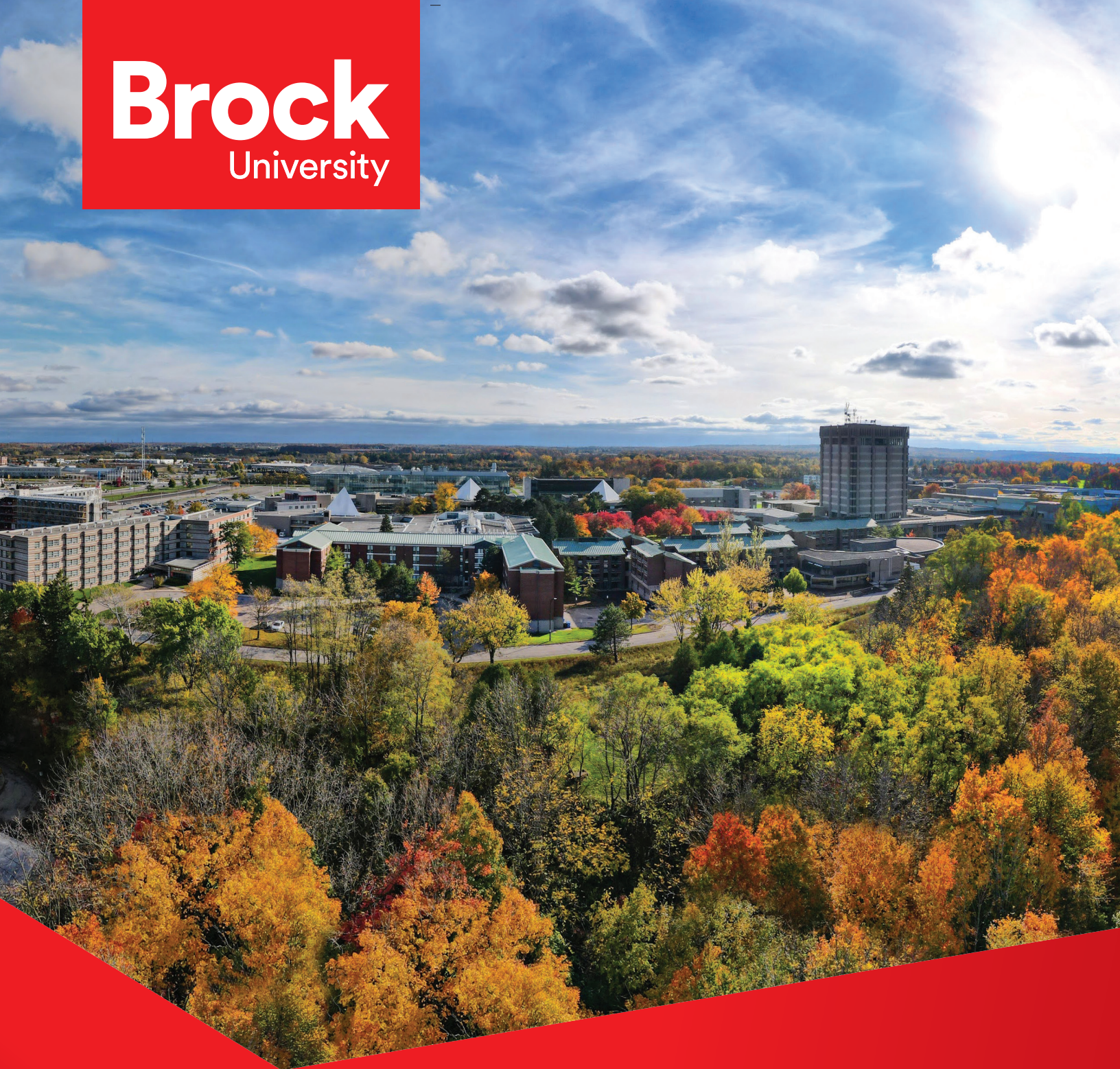


Brock
University



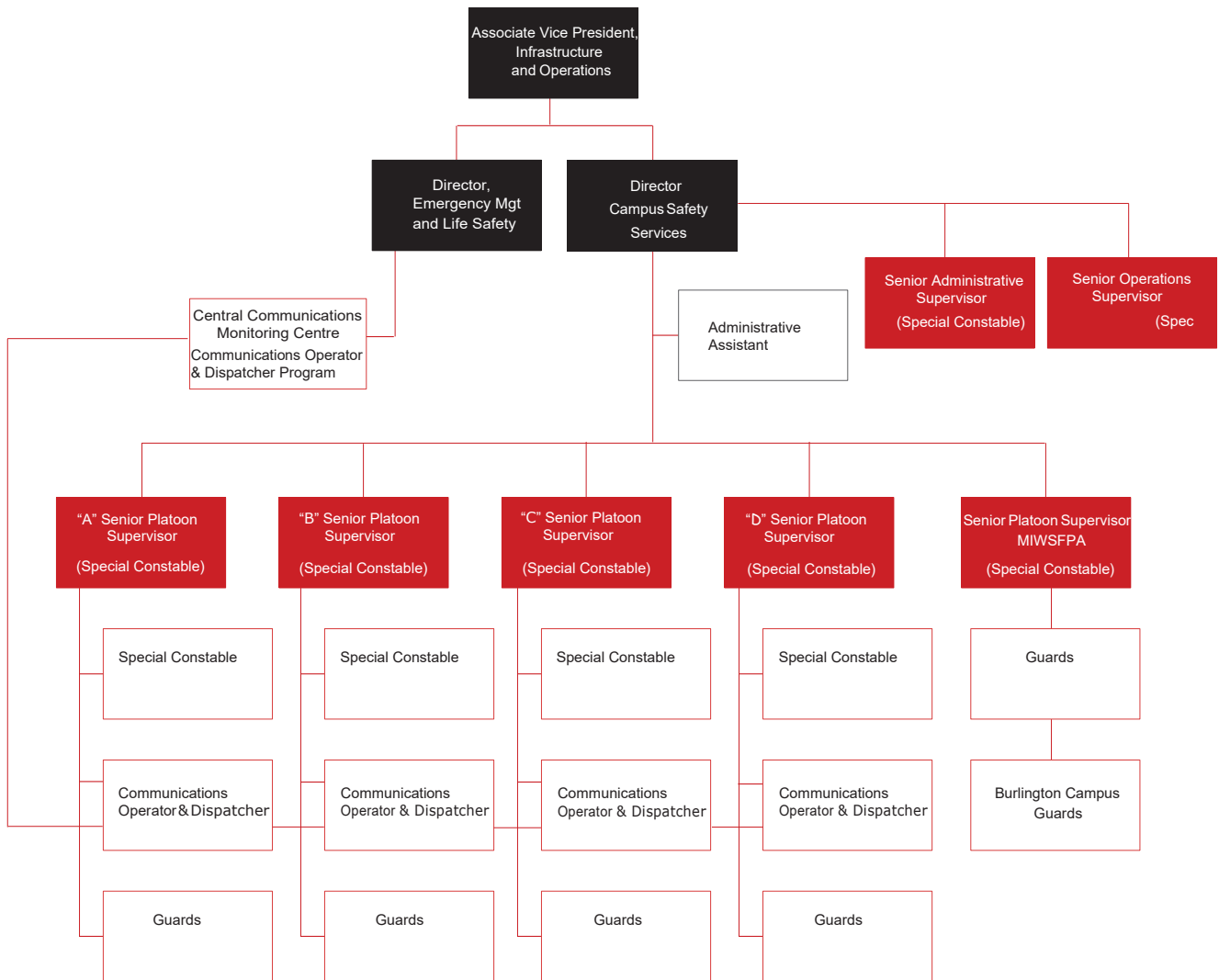
Campus Safety Services Annual Report 2024

Background:

Brock University Campus Safety Services takes pride in our dedicated team of experienced professionals who provide a safe welcoming environment for students, faculty, staff and visitors. The safety of our Brock Community is our number one priority along with promoting community – orientated services to all who live, work and learn at Brock University. In 2024 Brock University had a student population of just over 19,000 students, 6000 full and part time staff. This was also our 60th anniversary year 1964-2024, which brought several of our 100.000 alumni back to celebrate.

Community Safety and Policing Act, 2019 (CSPA):

The new C.S.P.A. act came into force on April 1, 2024. This legislation created a new process and oversight for the policing world. At Brock University there is a new Memorandum of Understanding (MOU) with Niagara Regional Police Service. Our new authorities as Special Constables will be approved through the Regional Municipality of Niagara Police Service Board. The legislation has set out new responsibilities and oversight, an increase in the areas of training for our Brock Special Constables. The act includes prescribed training and examinations through the Ontario Police College, along with conduct complaints received and matters affecting the appointments that had not been included in the previous Police Service Act. After a lengthy application process that took us into 2025, we are happy to report the application, and approvals were met in early 2025 and Brock University became a Special Constable employer.



CSS reports directly to the Vice President of Administration and Services. Presently we have 14 Special Constables which are complimented by 16 security guards from GardaWorld Security. We have a fully functional Central Communications Monitoring Centre located in our building, with 4 full time civilian dispatchers/communicators. This staff is responsible for the 900 plus cameras, 280 panic buttons and 200 emergency phones across all campuses. This technology compliments our emergency responses campus wide.

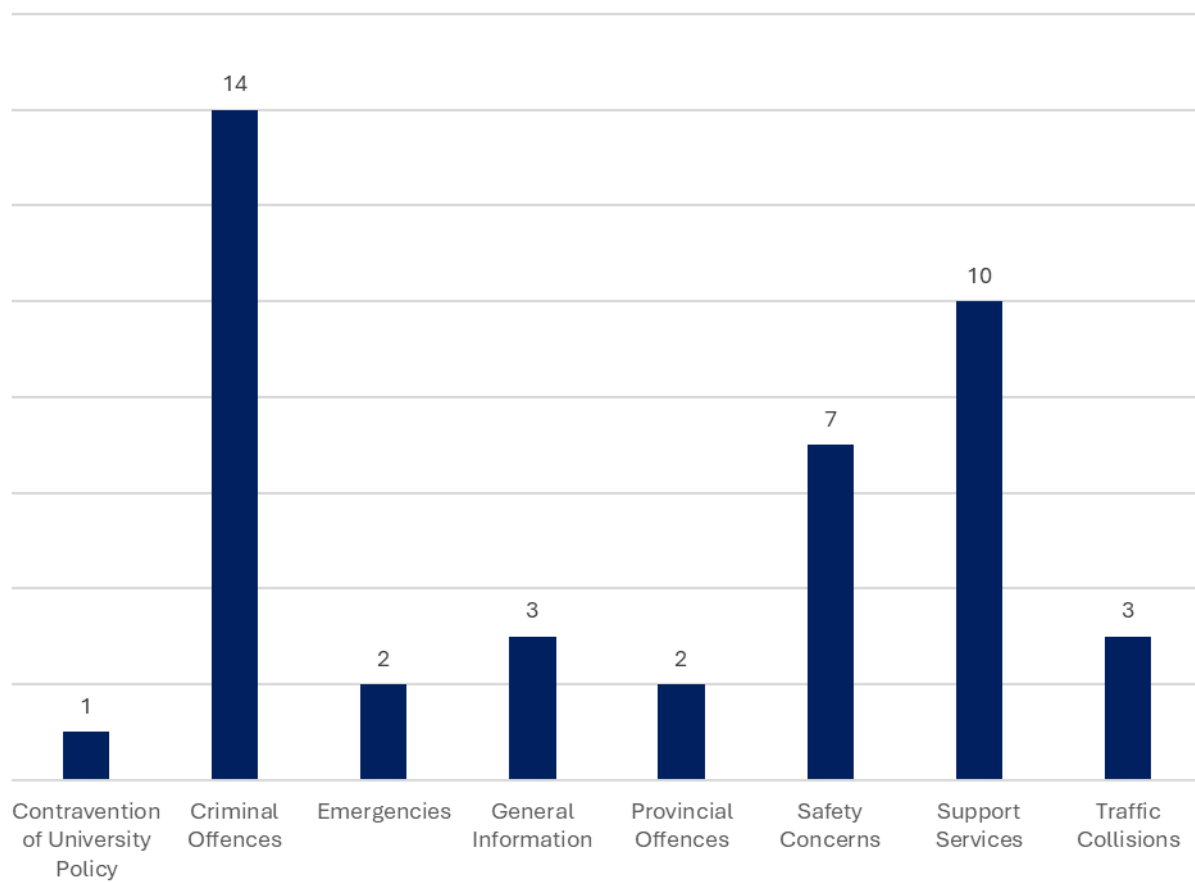
Statistical Information 2023-2024:

The University shall provide the Board with an annual report with statistical and evaluative information including, but not limited to, information regarding enforcement activities (including the type of incidents responded to and investigations undertaken)

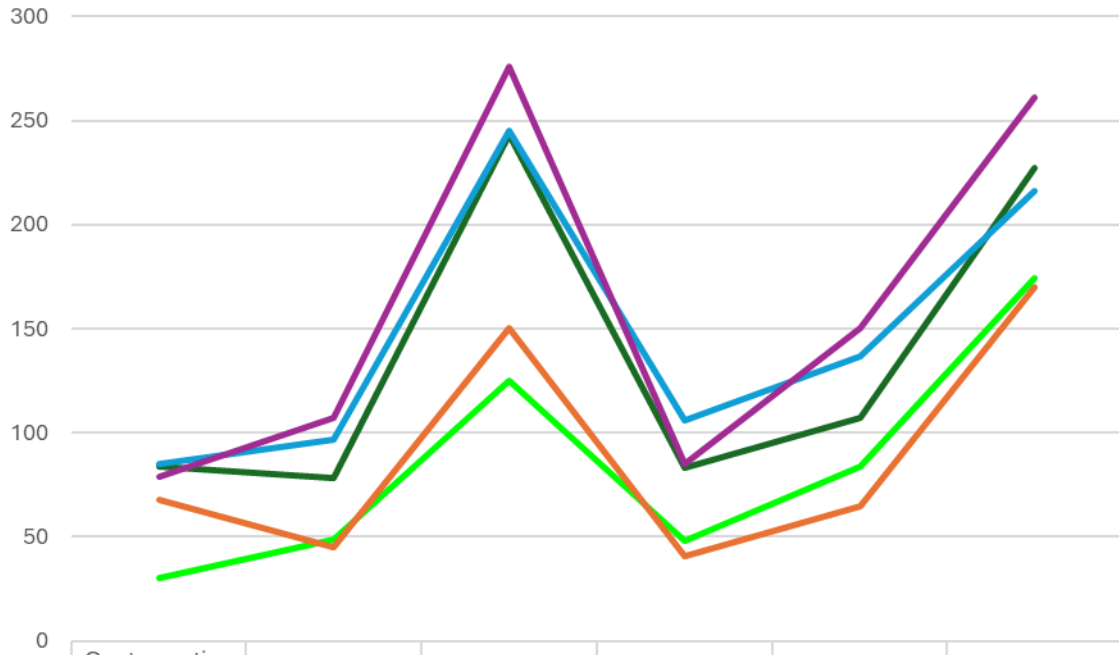
| Reporting Requirements | 2023 | 2024 |
|--|-------------|-------------|
| Contravention of University Policy | | |
| Contravention of University Policy | 85 | 79 |
| Criminal Offences | | |
| Assaults (Common, Bodily Harm) | 3 | 5 |
| Breaking and Entering | 1 | 1 |
| Criminal Harassment | 2 | 1 |
| Disorderly Conduct | 0 | 1 |
| Fail to Stop at an Accident | 1 | 1 |
| Fraud/Attempted | 6 | 8 |
| Forgery | 2 | 0 |
| Harassment by Telephone | 1 | 4 |
| Hate Propaganda | 1 | 4 |
| Impaired Operation of a Vehicle | 0 | 1 |
| Mischief (over \$5000/under \$5000, University Property/Other) | 11 | 7 |
| Other Criminal Codes | 1 | 0 |
| Other Sexual Offences | 1 | 0 |
| Pointing a Firearm | 1 | 0 |
| Possession of a Control Substance | 2 | 1 |
| Possession of a Prohibited Weapon | 0 | 1 |
| Sexual Assault/Harassment | 2 | 4 |
| Theft/Attempted | 55 | 60 |
| Uttering a Forged Document | 2 | 2 |
| Uttering Threats | 4 | 2 |
| Emergency | | |
| Buildings (Elevator Entrapments, Fire Panels, Floods) | 15 | 15 |
| Fire Alarms | 70 | 80 |
| Medical Calls | 151 | 178 |
| Municipal Offences | | |
| Mark or Apply Graffiti | 1 | 1 |
| Public Nuisance By-law | 0 | 1 |
| Property | | |
| Property Damage | 46 | 49 |
| Recovered Stolen Property | 4 | 2 |
| Protests/Occupation | | |
| Occupation/Demonstrations | 3 | 8 |
| Provincial Offences | | |
| Cannabis Act | 3 | 5 |
| Highway Traffic Act | 3 | 3 |
| Liquor License & Control Act | 11 | 12 |
| Mental Health Act | 17 | 30 |
| Safe Streets Act | 0 | 0 |
| Trespass to Property Act | 72 | 35 |

| Safety Concern | | |
|-------------------------------|-----|-----|
| Missing Person | 1 | 1 |
| Personal Safety Concerns | 36 | 60 |
| Safety Hazard | 5 | 5 |
| Suspicious Person or Vehicle | 55 | 57 |
| Support Services | | |
| Assistance | 213 | 254 |
| Escorts (Person/Currency) | 3 | 7 |
| Traffic Accident | | |
| Traffic Collision Parking lot | 13 | 23 |
| Traffic Collision Roadway | 10 | 6 |

Classification of incident reports filed with the
Niagara Regional Police in 2024



Reported incidents to Brock Campus Safety Services



| | Contravention University Policy | Criminal Offences | Emergencies | Provincial Offences | Safety Concerns | Support Services |
|------|---------------------------------|-------------------|-------------|---------------------|-----------------|------------------|
| 2020 | 30 | 49 | 125 | 48 | 84 | 174 |
| 2021 | 68 | 45 | 150 | 41 | 65 | 170 |
| 2022 | 84 | 78 | 243 | 83 | 107 | 227 |
| 2023 | 85 | 97 | 245 | 106 | 137 | 216 |
| 2024 | 79 | 107 | 276 | 85 | 150 | 261 |

2020 2021 2022 2023 2024

Campus Safety Services, Niagara Regional Police Service, and Communities:

Brock University Campus Safety Services works closely with many of our community partners both on and off our campuses; Niagara Regional Police Service, Regional Emergency Management Coordinators, Emergency Medical Services (EMS), Fire Services, and the Cities and Mayors of both St. Catharines and Thorold to improve the off-campus experience where many students live.

During the Fall and Winter terms and particularly on known busy nights, Brock University staff will accompany officers into these neighborhoods with city By-Law officers. The hiring of the special duty officers is done by Brock University.

Neighbourhoods are patrolled; parking enforcement and noise complaints are dealt with swiftly. Over the past 2 years this program has been very successful in reducing complaints to the neighbourhoods. In some cases, these neighbourhoods have become quiet and responsible, making the communities and politicians very thankful.

Campus Safety Communications

The Brock Safety app is a robust safety communication and information tool that has become a vital resource to the Brock community and beyond.

One of the easiest ways to connect with Campus Safety Services, 24 hours a day, 7 days a week is via the Brock Safety app. This user-friendly app can connect directly to a dispatcher in our Central Monitoring Communications Centre while also providing quick links to resources including Student Wellness & Accessibility, Crisis Information & Counseling, Report-a-Crime online, and information on lost and found property.

The Brock Safety app also plays a key role in our mass notification system. In the event an incident or situation may impact the Brock community, staff from our Central Communications and Monitoring Centre (CCMC) are able to alert subscribers through messaging broadcast on the app. In the event of an emergency, this communication may be supplemented with synchronized messaging campus-wide and online. In addition to alerts received on the Brock Safety app, the mass notification system can broadcast messaging in relation to more critical situations within seconds to all Brock desk phones, Brock emails, social media platforms, network computers, digital clocks/speakers, network digital display monitors and audible announcement via the PA system (where available).

CSS has a combined total of over 30,000 Brock Safety app subscribers and social media followers. Throughout the year, CSS will post educational and crime prevention content on social media.



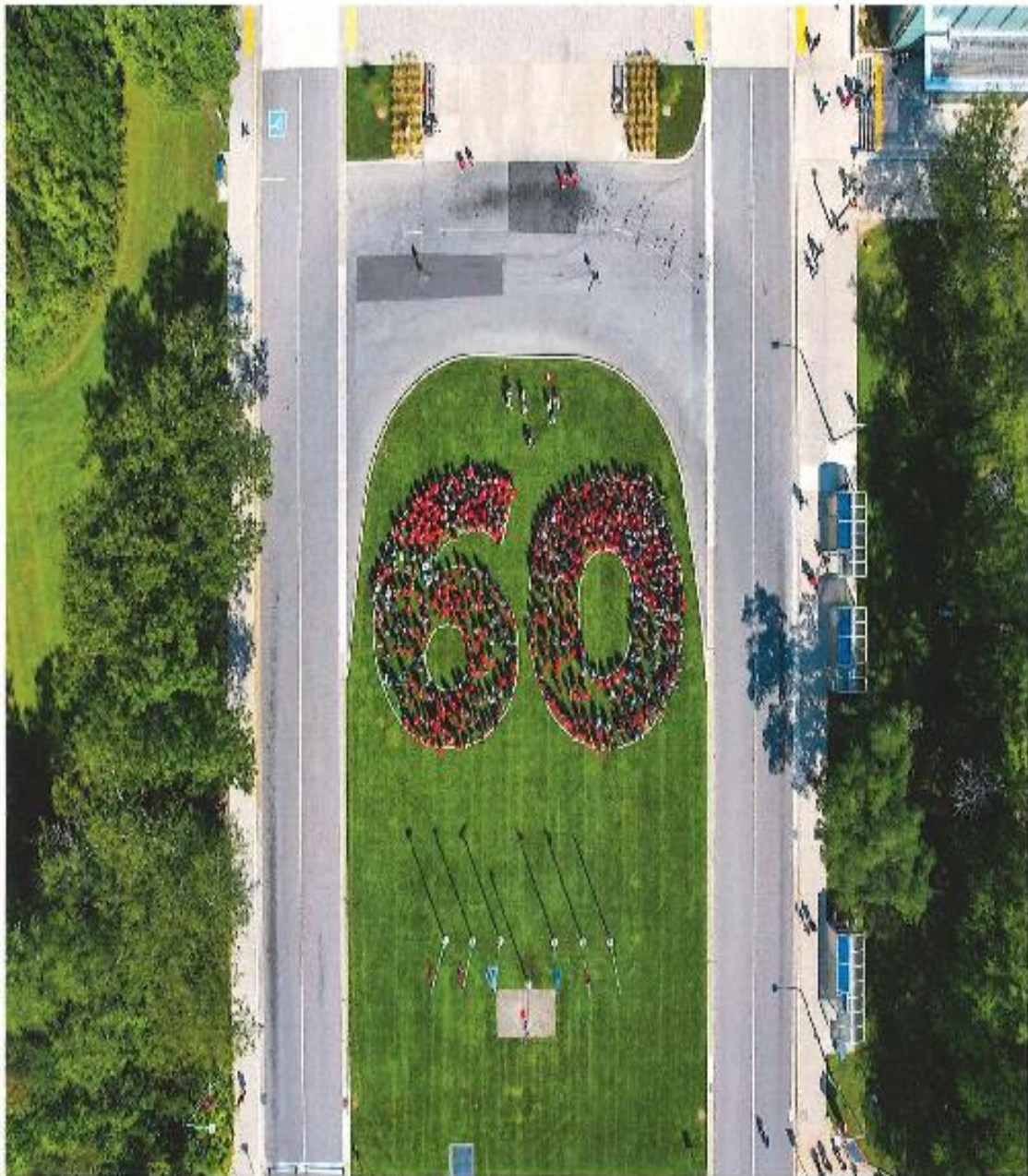
The Brock Safety app is available on iOS or Android operating systems and is completely free to download in your app store.



Connect with us:

@BrockSafety

BrockSpecialConstableService



About 300 people gathered in front of the Maj.-Gen. Sir Isaac Brock statue on Wednesday, Sept 4th to take an aerial photo in celebration of Brock University's 60th anniversary. (Photo by Matt Milliere)



Campus Safety Services

Brock University
Kenmore Centre
Niagara Region
1812 Sir Isaac Brock Way
St. Catharines, ON
Canada
L2S 3A1

T 905 688 5550

F 905 688 6402

x4300 (Day)

x3200 (Emergency/Night)

E campussafety@brocku.ca

W brocku.ca/campus-safety