


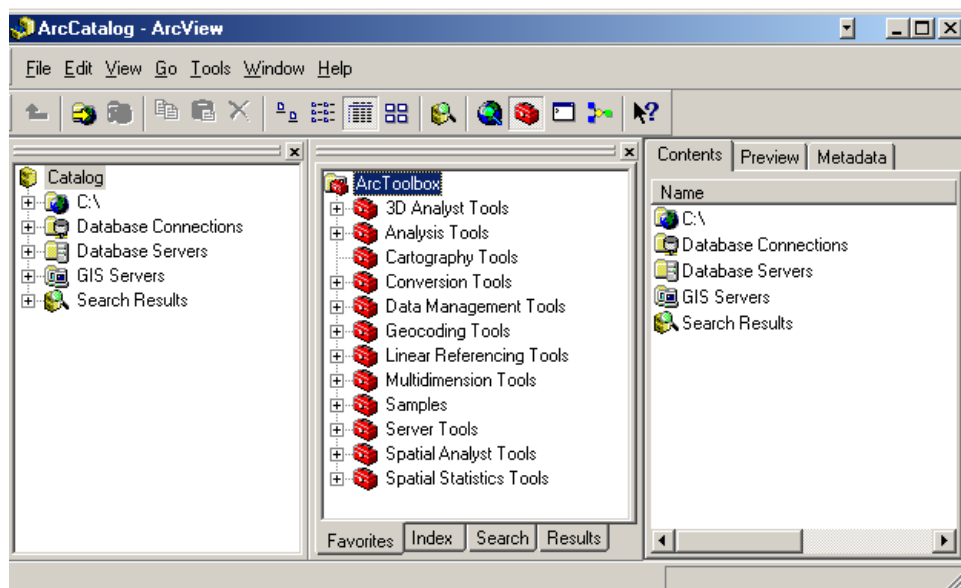
# BROCK UNIVERSITY MAP LIBRARY

## Instructions for Converting DEM data to Raster

### Introduction

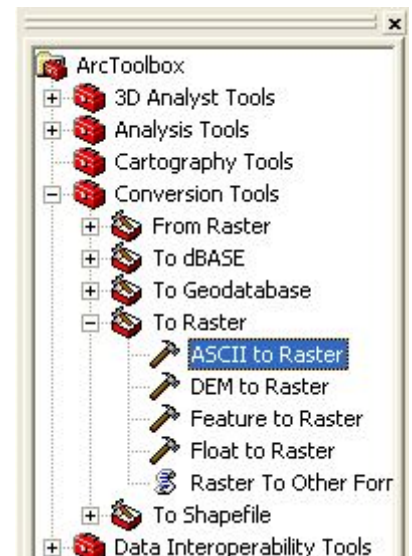
This procedure outlines steps needed to convert Digital Elevation Model (DEM) data into a raster GRID format for use with ArcGIS.

- Run ArcCatalog, then run ArcToolbox by clicking the icon .
- The ArcCatalog window will split to reveal the ArcToolbox options.

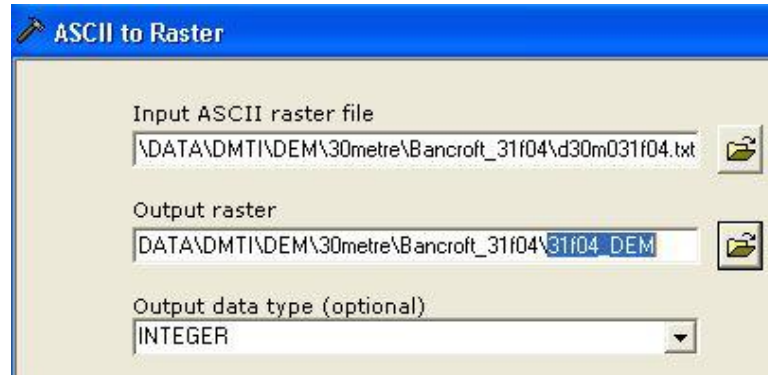


### ASCII (.txt) to Raster

- Select Conversion Tools > To Raster > ASCII to Raster. Double-click the "ASCII to Raster" tool to activate it. The ASCII to Raster dialogue box appears.
- Click the browse button beside the "Input ASCII raster file" field to navigate to the saved ASCII (.txt) file.



- The “Output raster” is automatically assigned a name that is not very appropriate. Change the name to reflect the DEM tile reference. See the highlighted name on the image below for an example.

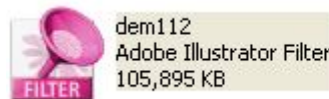


- Click “OK”. A status window appears.
- When the status indicates “completed”, click “Close”. The raster file is now ready for use in ArcMap.


### Binary Float to Raster

Some data is provided in binary float format. Typically this format uses the \*.flt extension. If the data in question is described as binary float but uses a \*.dem extension, the file must be renamed with \*.flt as the defining extension.

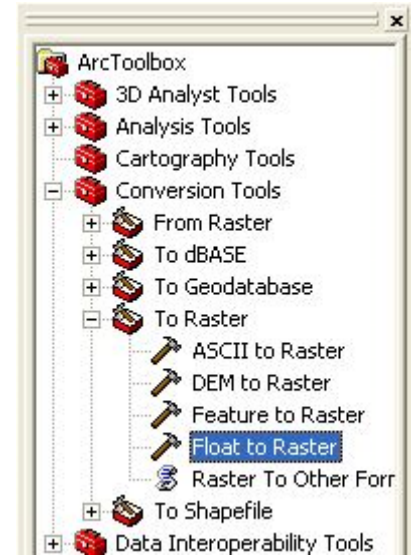
- To change the extension of a DEM, open "My Computer" and navigate to the file location.
- From the TOOLS dropdown menu, select Folder Options, then click the "VIEW" tab. Make sure the option "Hide extensions for known file types" is UNCHECKED before proceeding.
- Right-click the DEM file and select "rename".
- To change only the extension, move the cursor to the end of the name, highlight "dem" and enter "flt". Hit enter on the keyboard to accept the new name.



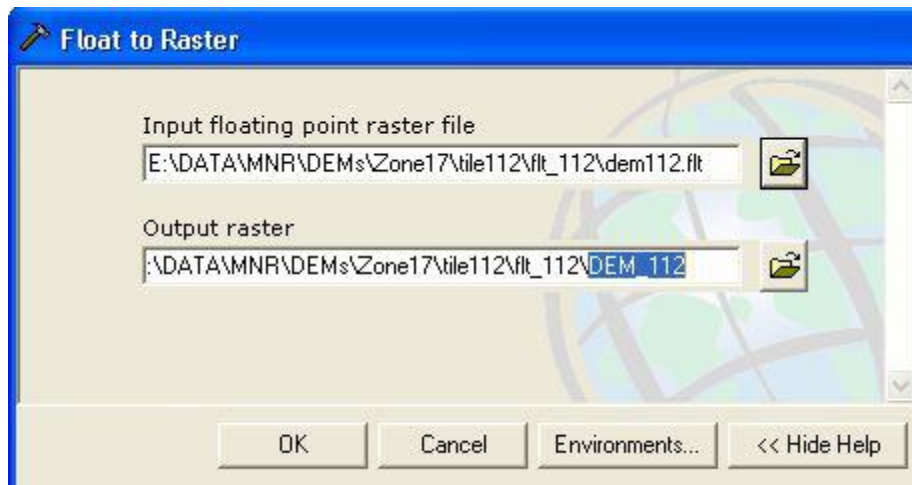
To process the float data, a "header" file must reside with the data file. See the 2 associated files listed in the image above.

- In ArcMap, run ArcToolbox .

- Select Conversion Tools > To Raster > ASCII to Raster. Double-click the "Float to Raster" tool to activate it. The Float to Raster dialogue box appears.



- Click the browse button beside the "Input floating point raster file" field to navigate to the saved DEM float (.flt) file.
- The "Output raster" is automatically assigned a name that is not very appropriate. Change the name to reflect the DEM tile reference. See the highlighted name on the image below for an example.



- Click "OK". A status window appears.
- When the status indicates "completed", click "Close".

To use the DEM with other datasets, it is recommended that the "Data Management Tool" > "Transformations and Projections" be used to define the proper projection for the data. Steps to accomplish this task can be found at [http://www.brocku.ca/maplibrary/procedures/raster\\_proj/projecting.htm](http://www.brocku.ca/maplibrary/procedures/raster_proj/projecting.htm)