

BROCK UNIVERSITY MAP LIBRARY

How to Clip Multiple Files in ArcView 3.2

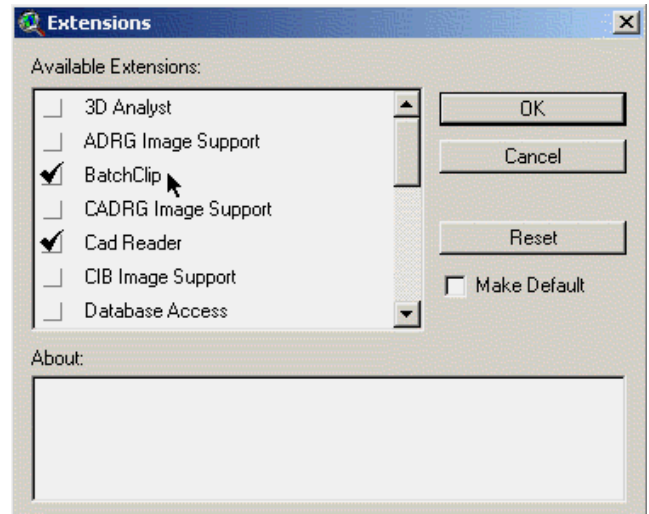
This procedure outlines steps to clip a portion of multiple layers using ArcView 3.2. While you can easily clip a single file using the GeoProcessing Wizard, you must add a new extension called "batchclip" to clip more than one file at a time.


Acquiring "batchclip.avx"

The batchclip extension can be downloaded from the ESRI ArcScript website at <http://arcscripts.esri.com/>. Search for the script "batchclip" without the quotations and download the script to your local harddrive. Unzip the file and store the batchclip.avx file in the ArcView extensions directory. This directory is typically found in C:\ESRI\AV_GIS30\ARCVIEW\EXT32.


Loading the script

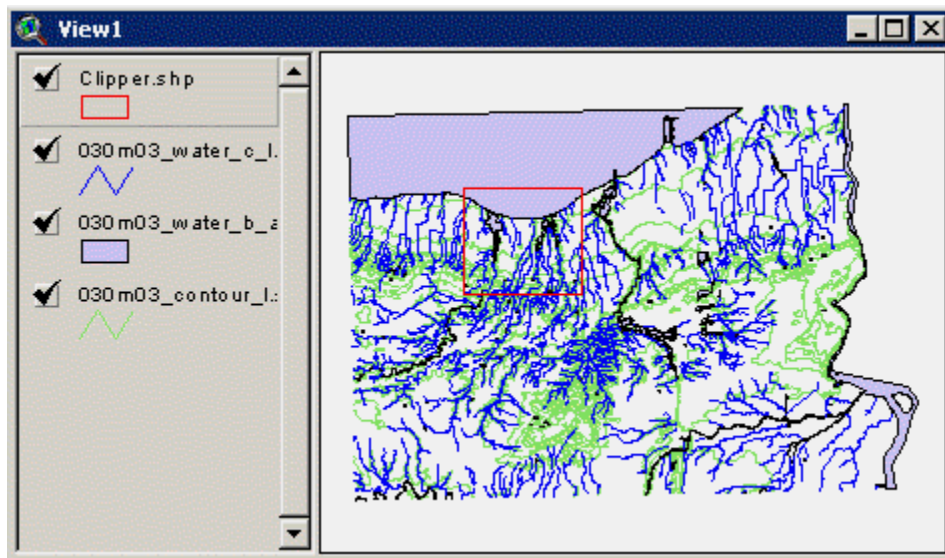
1. Run ArcView.
2. Select *File > Extensions*. BatchClip appears in the extensions listing.
3. Click in the box beside the name to turn the extension on.
4. Click OK.



A new button appears in the toolbar .

Add the data layers to clip

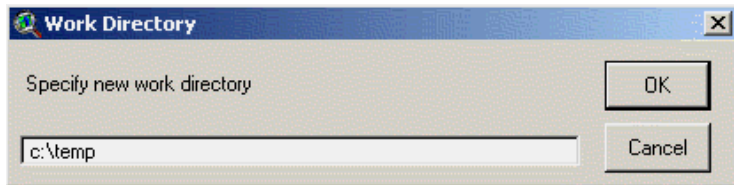
5. Click on the Add Data button  to add the layers to be clipped as well as the polygon layer to be used as the "clipper".




Set the Working Directory

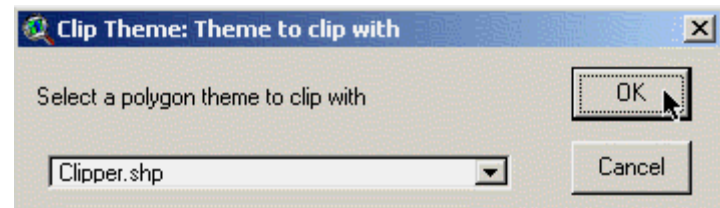
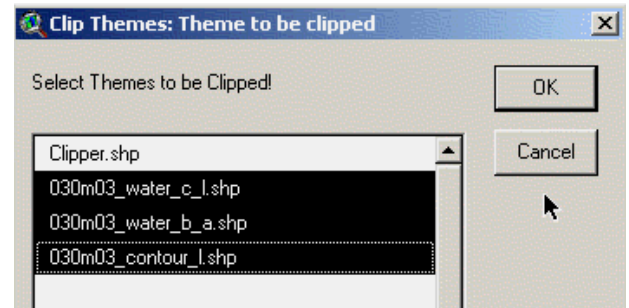
You must set the *working directory* before proceeding.

1. Select **File > Set Working Directory...**
2. Enter the path leading to the directory where you want your files stored. Do NOT add a backward slash at the end of the path. ArcView does this automatically. See image below for details. Click OK.



Running BatchClip

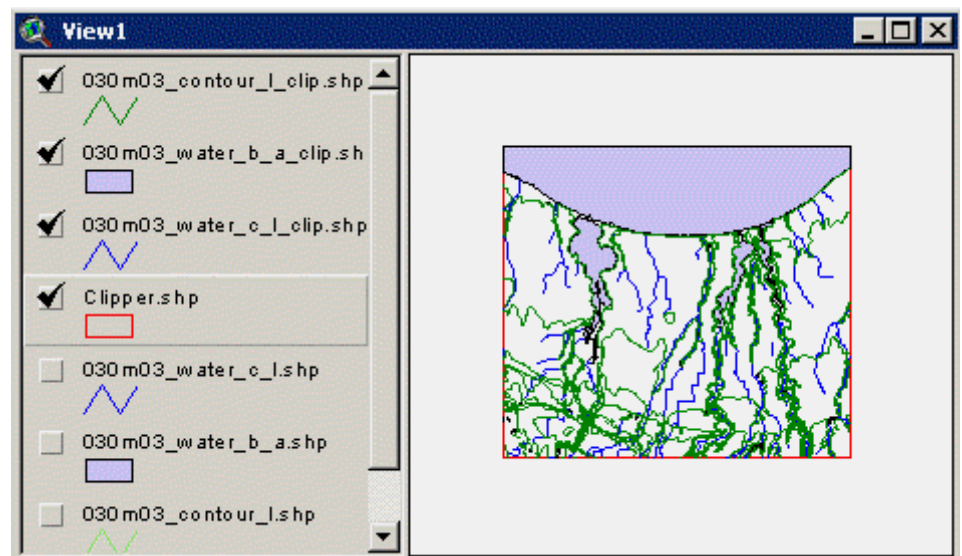
1. Click the BatchClip button on the toolbar .
2. Click YES when prompted with the message regarding the working directory.
3. Select the theme layers to be clipped. Click OK.
4. Select the polygon theme to clip with. Click OK.



The clipped shapefiles are added automatically to your view with "_clip" added to the file name.

5. Turn OFF the original layers and turn ON the newly clipped layers. Zoom to the study area for a better view.

To clip multiple layers using ArcMap, follow the steps outlined in the ACMLA Bulletin 125, page 18.



Created: January 2005