


# BROCK UNIVERSITY MAP LIBRARY

## Define Projection for Raster GRID Data

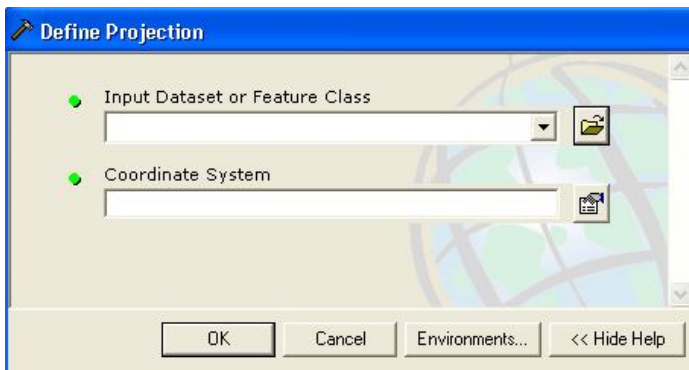
### Introduction


This procedure outlines steps for defining a projection for raster GRID data. Before defining the projection of NRCan CDED data be sure the data has been converted to decimal degree coordinates using the ArcView 3.2 procedure outlined at <http://www.brocku.ca/maplibrary/instructions/DEMshift.pdf>

### Using ArcToolbox

1. To access ArcToolbox, run ArcMap, then click the ArcToolbox button .
2. Select **Data Management Tools > Projections and Transformations > Define Projection**.

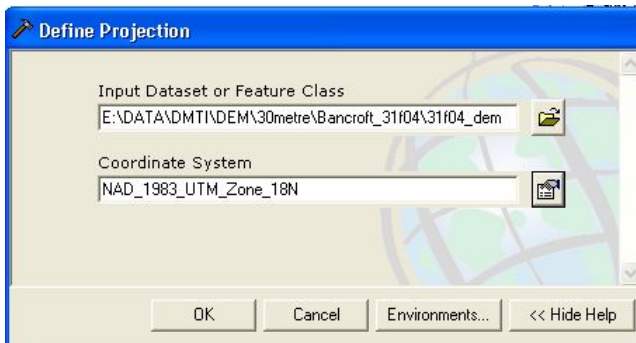
The "Define Projection" dialogue box appears.



3. Click the browse button beside the "Input Dataset or Feature Class" field and navigate to the raster file.
4. Click the button  beside the Coordinate System field and navigate to the named coordinate system. In this example follow the path to **Projected Coordinate Systems > UTM > NAD 1983 > NAD 1983 UTM Zone 17N.prj**

HINT: To determine the appropriate UTM zone, look up the associated NTS paper map and find the zone number on the map margin.

5. Click OK to return to the "Define Projection" window.
6. Click OK to accept the settings for defining the projection.



When the process is "completed" close the Define Projection window.

