

Discover Brock

Follow the Badger paws

Follow the **BLUE** Badger paws to find your way to the Welcome Centre. Follow the **RED** Badger paws to navigate the Hot Spot tour route.

Information Fair

Ian D. Beddis Gymnasium

Noon to 4 p.m.

Explore all of our programs and services. Faculty, staff and student representatives will be in our Ian D. Beddis Gymnasium, ready to chat and answer any questions that you may have. Refer to the large floor plan on your way in to easily locate the academic programs that interest you, then be sure to check out our student services and First-Year Experience program areas.

College student admission/transfer options

Ian D. Beddis Gymnasium

Noon to 4 p.m.

Transferring from an Ontario college? Visit the Admissions booth in the Information Fair for:

- On-the-spot applications.
- On-the-spot admissions.
- On-the-spot transfer credit assessment.

Hot Spot tours from noon to 4 p.m.

Tour the campus via our unique Hot Spot tour program. See classrooms, seminar rooms, service areas, student meeting spaces, recreational areas and more. Visit the stations that are of most interest to you, or take a full campus tour by visiting them all. No large tour groups here — visit with current Brock students at your own pace to learn about life at Brock. Refer to the map inside for Hot Spot locations.

Residence tours

Noon to 4 p.m.

1:30 to 4:30 p.m. (Quarry View)

Discover why Brock is known for having one of the finest residence systems in the country. Tour the various residence styles that Brock offers.

DeCew

Departs from DeCew Stairwell 6 (access from Hot Spot 7)

Lowenberger and Village

Departs from Lowenberger Lobby (access from Hot Spot 18)

Earp

Departs from Earp Lobby (access from Hot Spot 7)

Quarry View

Departs from Quarry View Residence (access from Hot Spot 12)

Classics department tour

East Academic (departing from the Classics booth in the Information Fair)

2:30 p.m.

This is your opportunity to tour the Department of Classics, including the archaeology lab and a display on the archaeology of technology from the Cypriote Museum collection.

Nursing lab tours

East Academic (drop in)

1 to 3:30 p.m.

Our clinical simulation lab features more than \$500,000 in state-of-the-art simulation equipment that will enhance your clinical practice and improve your skills. Access from Hot Spot 12.

Tour the Marilyn I. Walker School of Fine and Performing Arts

Academic South 201

1:30 to 3:15 p.m.

Our new state-of-the-art facility for the Marilyn I. Walker School of Fine and Performing Arts will be open for classes September 2015. Take a virtual tour of the new school by viewing photographs, architectural drawings and video, while chatting with faculty and staff about all of the exciting features this new space has to offer.

Brock gear

Campus Store

Noon to 4 p.m.

Don't forget to stop by our Campus Store or the Guernsey Market outlet to get your own Brock gear before leaving campus. Staff will also be available to explain our procedure for buying and selling textbooks.

*Future Badgers — receive \$10 off your purchase at the Campus Store (minimum \$40 purchase) with your coupon (distributed with your registration package).

Where to eat on campus

Guernsey Market

10:30 a.m. to 9:30 p.m

Walker Food Court

10:30 a.m. to 5 p.m.

Tim Hortons (Thistle)

Noon to 5 p.m.

DeCew Residence Dining Hall

Noon to 5 p.m. (drinks and dry snacks available)

Lowenberger Dining Hall

Noon to 5 p.m. (drinks and dry snacks available)

Contact us:

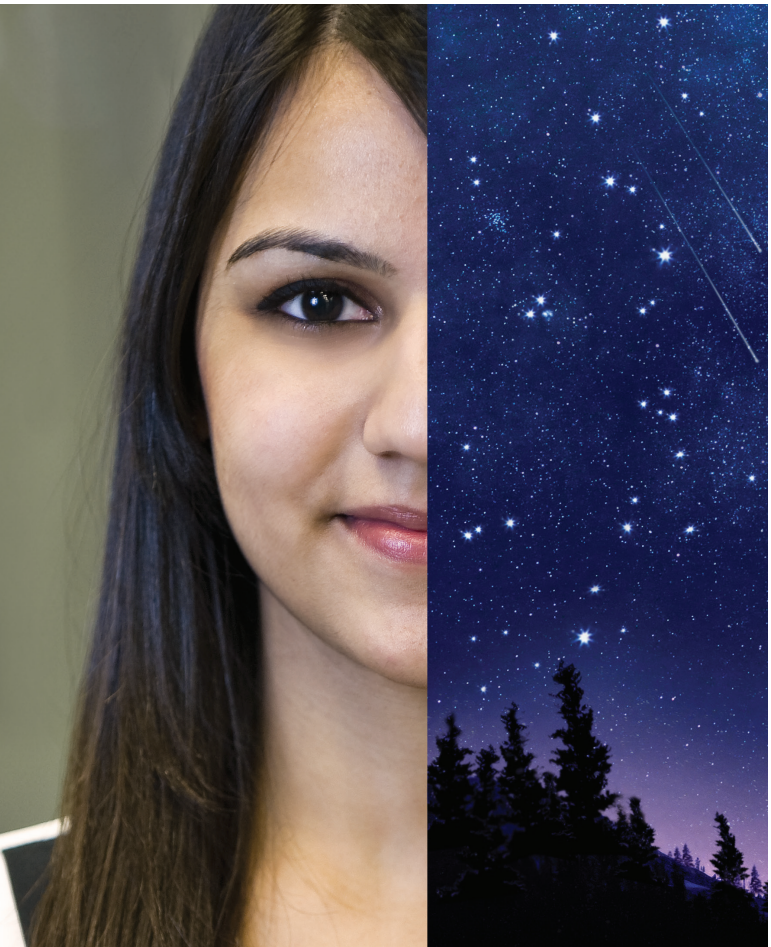
905 688 5550 x4293

liaison@brocku.ca

discover.brocku.ca

 BrockUniversityFutureStudents

 @DiscoverBrock



Open House 2015

A guide to your day at Brock University

Welcome to Brock

Today is all about you - have fun and enjoy your day.

What is there to do today?

- Tour the campus.
- Visit the residences.
- Meet faculty, staff and students at our Information Fair.
- Attend presentation sessions about the programs and services that interest you.

Where should I start?

- Review the presentation schedule to determine the sessions you'd like to attend. Note the time(s) and room(s).
- Fit your campus tour, residence visits and time in the Information Fair around your presentation sessions — these will be available all day until 4 p.m.

Questions? Brock staff and student volunteers in red shirts are available at the Welcome Centre and all across campus to answer any questions and to help you find your way.

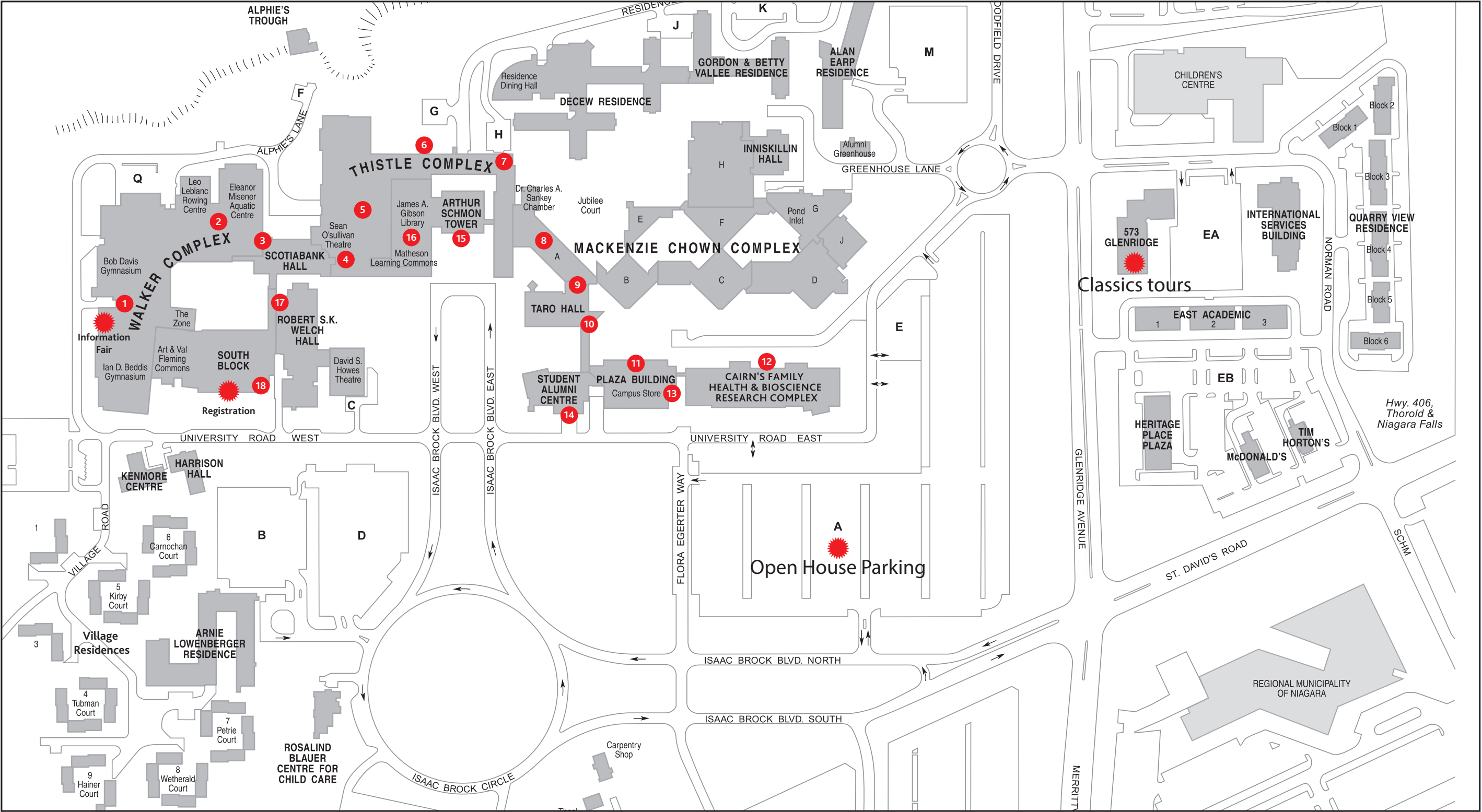
Presentation sessions at a glance

Session times	Academic South 201	Academic South 202	Academic South 203	Academic South 204	Academic South 215	Academic South 217	Thistle 247
12:30-1:15 p.m.		Co-op programs	Concurrent Education	Chartered Professional Accountant (CPA) Pathway	Marilyn I Walker School of Fine and Performing Arts	Faculty of Social Sciences	Kinesiology, Health Sciences & Nursing
1:30-2:15 p.m.		Physical Sciences, Mathematics & Computer Science	Financing Your Education	First-year Humanities	Psychology	Child and Youth Studies	Goodman School of Business
2:30-3:15 p.m.	Marilyn I Walker School of Fine and Performing Arts Virtual tour (drop-in)	Co-op programs	Concurrent Education	Life Sciences	Sociology	Communication, Popular Culture & Film	Sport Management, Recreation & Leisure Studies, Physical Education

Hot Spot tours

Visit the stations that are of most interest to you, or take a full campus tour and visit them all.

- 1. Walker Complex/Ian D. Beddis Gymnasium/The Zone Fitness Centre/Athletics and Recreation demonstrations
- 2. Eleanor Misener Aquatic Centre
- 3. Computer Commons (Fish Bowl)
- 4. Sean O'Sullivan Theatre
- 5. Thistle 247/Guernsey Market
- 6. Scotiabank/Collabratorium
- 7. Thistle East/eClassroom → Residence Access
- 8. Student Life and Community Experience/Mackenzie Chown Complex
- 9. Co-op programs/Taro Hall/Goodman School of Business
- 10. Brock University Students' Union
- 11. Plaza Building
- 12. Cairns Family Health and Bioscience Research Complex/BioLinc → Nursing Lab Access and Quarry View Residence Access
- 13. Brock University Campus Store
- 14. Student-Alumni Centre/Union Station
- 15. Arthur Schmon Tower
- 16. Matheson Learning Commons
- 17. The General Brock Store
- 18. South Block/Health Services/Campus Security → Residence Access



Classics tours